

GRAND FORKS, NORTH DAKOTA

ILS or LOC RWY 18

GRAND FORKS AFB (KRDR)

LOC I-AVA 111.3	APCH CRS 177°	Rwy Idg 12,351 TDZE 900 Arprt Elev 911
---------------------------	-------------------------	--

[USAF]

RADAR or DME required.



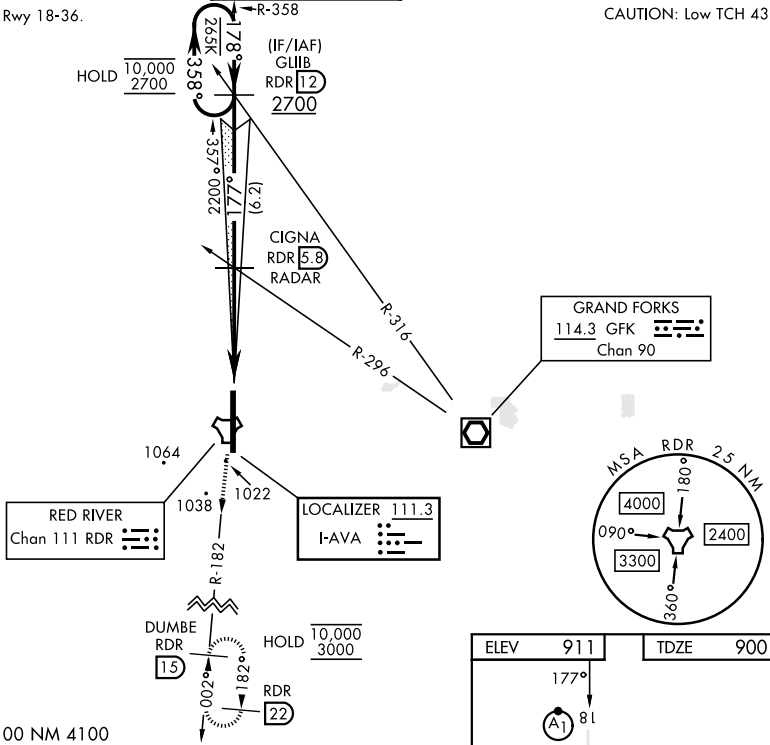
MISSED APPROACH: Climb to 3000 on RDR TACAN R-182 to DUMBE and hold.

* When ALS inop, increase RVR to 40 and vis to ¾ mile.
** When ALS inop, increase CAT AB RVR to 55 and vis to 1 mile; CAT CDE vis to 1¼ miles.

ATIS 273.45	APP CON 118.1 318.1	RED RIVER TOWER 124.9 349.0	GND CON 119.15 275.8	CLNC DEL 119.15 360.7
-----------------------	-------------------------------	---------------------------------------	--------------------------------	---------------------------------

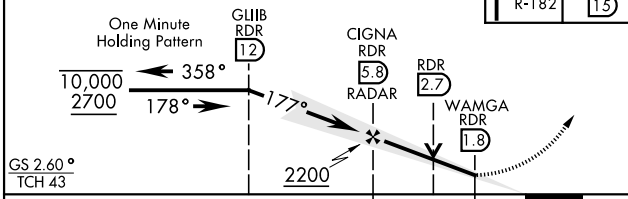
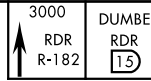
***Circling NA E of Rwy 18-36.

CAUTION: Low TCH 43

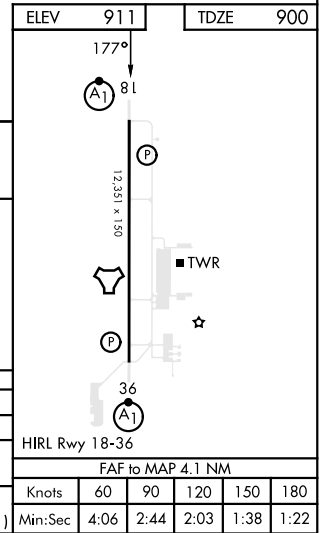


1339
EMERG SAFE ALT 100 NM 4100

VGSI and ILS glidepath not coincident (VGSI Angle 2.60/TCH 48).



GS 2.60° TCH 43



CATEGORY	A	B	C	D	E
S-ILS 18*	1100/24		200	(200-½)	
S-LOC 18**	1340/24	440 (500-½)	1340/40	440	(500-¾)
CIRCLING***	1340-1 429 (500-1)	1380-1 469 (500-1)	1380-1½ 469 (500-1½)	1540-2 629 (700-2)	1560-2¼ 649 (700-2¼)

FAF to MAP 4.1 NM					
Knots	60	90	120	150	180
Min:Sec	4:06	2:44	2:03	1:38	1:22

GRAND FORKS, NORTH DAKOTA

47°58'N-97°24'W

GRAND FORKS AFB (KRDR)

Orig 02NOV23

ILS or LOC RWY 18

NC-1, 28 NOV 2024 to 26 DEC 2024

NC-1, 28 NOV 2024 to 26 DEC 2024