

MINOT, NORTH DAKOTA

COPTER RNAV (GPS) RWY 30

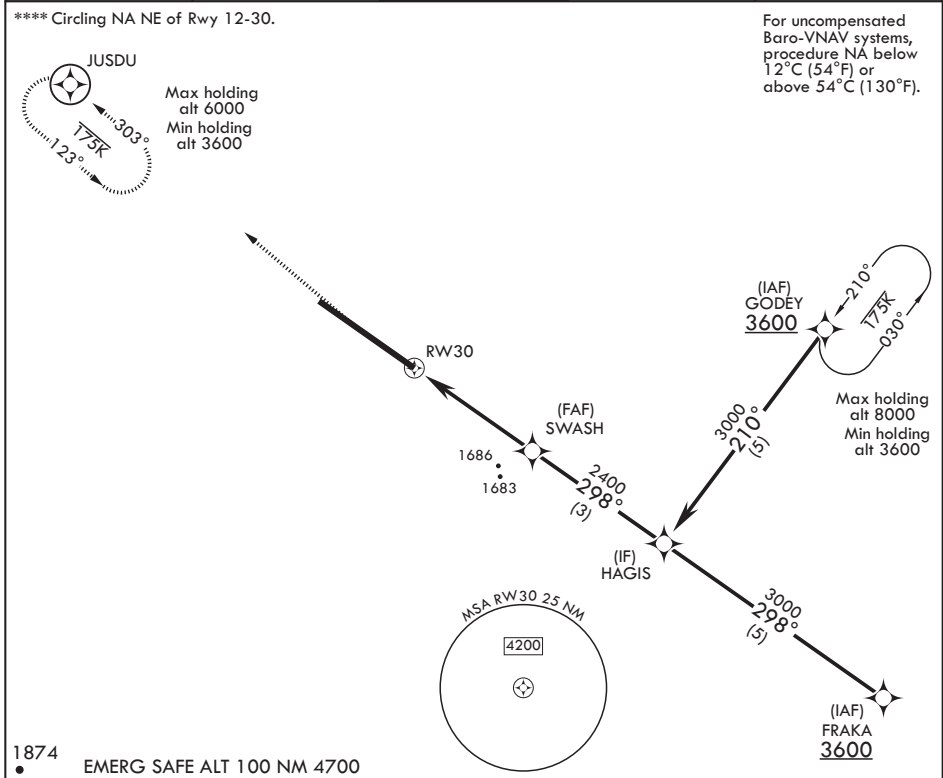
WAAS CH 91355 W30A	APCH CRS 298°	Rwy ldg TDZE Arprt Elev	13,198 1646 1666
--------------------------	------------------	-------------------------------	------------------------

AL-5013 (USAF)

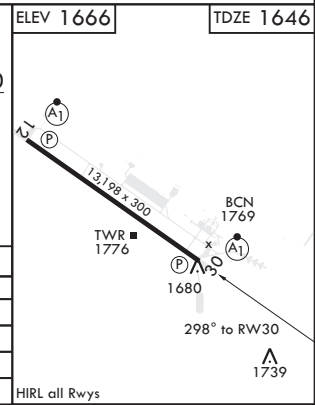
MINOT AFB (KMIB)

* When ALS inop, increase CAT A RVR to 40, vis to 3/4 mile. ** When ALS inop, increase CAT A vis to 1 5/8 miles. *** When ALS inop, increase CAT A RVR to 55, vis to 1 mile.	ALSF-1 	MISSED APPROACH: Climb to 2100 then climbing right turn to 3600 direct JUSDU and hold, continue climb-in-hold to 3600.
--	------------	--

ATIS * 278.8	APP CON 119.6 363.8	TOWER * 120.65 253.5	GND CON 134.0 275.8	CLNC DEL 326.2
-----------------	------------------------	-------------------------	------------------------	-------------------



2100	3600	JUSDU	HAGIS	ELEV 1666	TDZE 1646
↑ NAVA only		SWASH	3000		
RW30		↑ 1.3 NM to RW30	2400	GP 2.50° TCH 49	
2.7 NM					
CATEGORY	COPTER				
LPV DA*	1846/24	200	(200-1/4)		
RNAV/VNAV DA**	2040/60	394	(400-1 1/2)		
RNAV MDA***	2040/24	394	(400-1/2)		
C CIRCLING****	2120-1	454	(500-1)		



MINOT, NORTH DAKOTA 48°25'N - 101°21'W MINOT AFB (KMIB)

Orig 19JUL18 COPTER RNAV (GPS) RWY 30

NC-1, 28 NOV 2024 to 26 DEC 2024

NC-1, 28 NOV 2024 to 26 DEC 2024