

WAAS CH <b>93803</b> <b>W22A</b>	APP CRS <b>224°</b>	Rwy Idg TDZE Apt Elev	<b>5628</b> <b>297</b> <b>298</b>
--	------------------------	-----------------------------	---

# RNAV (GPS) RWY 22

MOULTRIE MUNI (MGR)

RNP APCH.

- ▼ Circling Rwy 16 NA at night.
- ▲ Rwy 22 helicopter visibility reduction below 3/4 SM NA.  
For uncompensated Baro-VNAV systems, LNAV/VNAV NA below -15°C or above 54°C.

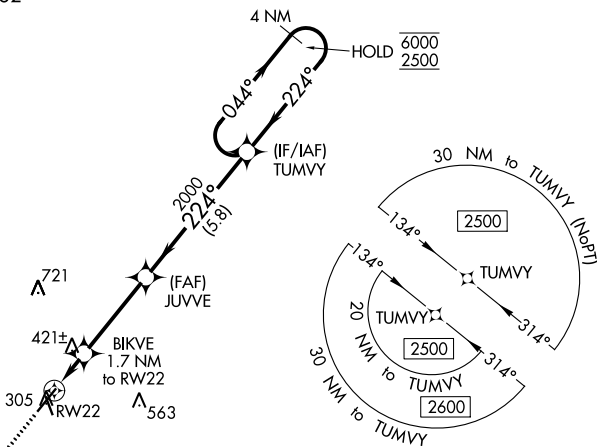
MISSED APPROACH:  
Climb to 2500 direct  
YALMI and hold.

AWOS-3PT  
**118.925**

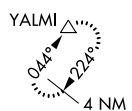
VALDOSTA APP CON ★  
**126.6 285.6**

UNICOM  
**122.8** (CTAF) **0**

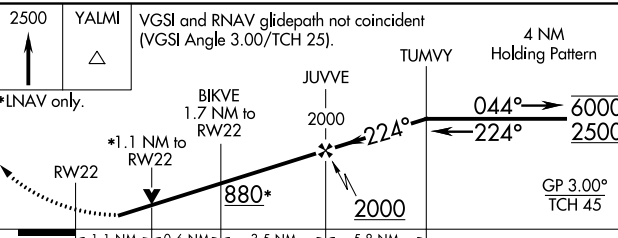
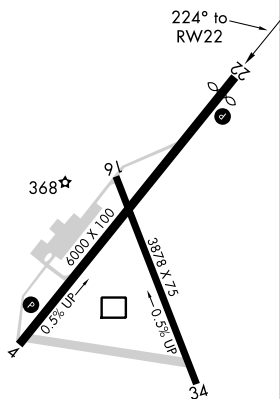
▲ 1362



MISSED APCH FIX



ELEV 298	<b>D</b>	TDZE 297
----------	----------	----------



CATEGORY	A	B	C	D
LPV DA		601-1	304 (400-1)	
LNAV/VNAV DA		569-1	272 (300-1)	
LNAV MDA	680-1	383 (400-1)	680-1 1/8	383 (400-1 1/8)
<b>C</b> CIRCLING	720-1 422 (500-1)	760-1 462 (500-1)	860-1 1/2 562 (600-1 1/2)	1080-2 1/2 782 (800-2 1/2)

SE-4, 28 NOV 2024 to 26 DEC 2024

SE-4, 28 NOV 2024 to 26 DEC 2024