

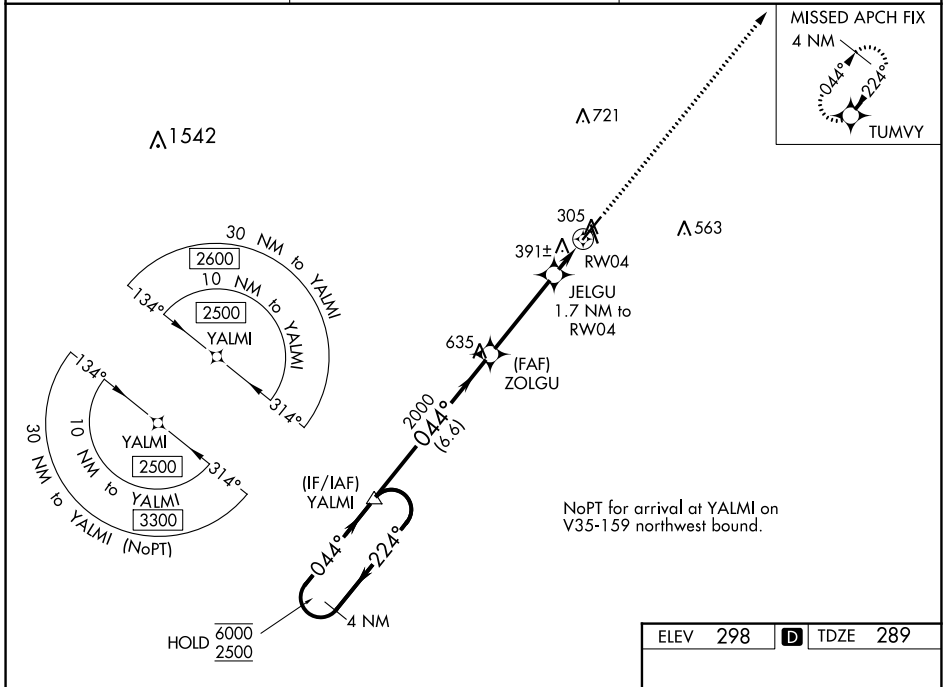
WAAS CH <b>82603</b> <b>W04A</b>	APP CRS <b>044°</b>	Rwy Idg TDZE Apt Elev	<b>6000</b> <b>289</b> <b>298</b>
--	------------------------	-----------------------------	---

# RNAV (GPS) RWY 4

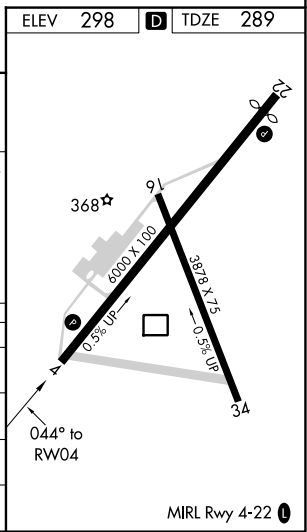
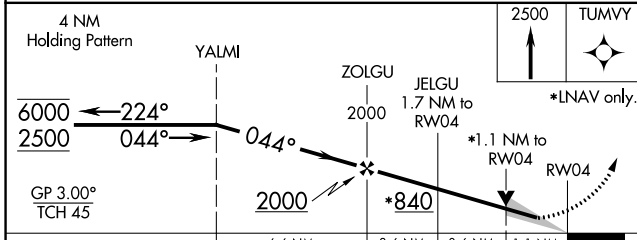
MOULTRIE MUNI (MGR)

RNP APCH.	MISSED APPROACH: Climb to 2500 direct TUMVY and hold.
<p>⚠ Circling Rwy 16 NA at night. For uncompensated Baro-VNAV systems, LNAV/VNAV NA below -15°C or above 54°C.</p>	

AWOS-3PT <b>118.925</b>	VALDOSTA APP CON ★ <b>126.6 285.6</b>	UNICOM <b>122.8</b> (CTAF) <b>0</b>
----------------------------	--	--



NoPT for arrival at YALMI on V35-159 northwest bound.



CATEGORY	A	B	C	D
LPV DA		539-1	250 (300-1)	
LNNAV/VNAV DA		552-1	263 (300-1)	
LNNAV MDA		660-1	371 (400-1)	
<b>C</b> CIRCLING	720-1 422 (500-1)	760-1 462 (500-1)	860-1½ 562 (600-1½)	1080-2½ 782 (800-2½)

SE-4, 28 NOV 2024 to 26 DEC 2024

SE-4, 28 NOV 2024 to 26 DEC 2024