

LOC I-ESF <b>111.5</b> Chan <b>52</b>	APP CRS <b>270°</b>	Rwy Idg <b>5998</b> TDZE <b>92</b> Apt Elev <b>112</b>
---	------------------------	--

# ILS or LOC/DME RWY 27

ESLER RGNL (E/SF)

RADAR or DME required.

**NA** Circling Rwy 14, 32 NA at night. VDP NA with Alexandria Intl altimeter setting. When local altimeter not received, use Alexandria Intl altimeter setting and increase DA to 327 feet; increase all MDA to 40 feet and Circling visibility Cat D ¼ SM. For inop MALSRS, increase S-LOC 27 Cat C/D visibility to 1 SM.

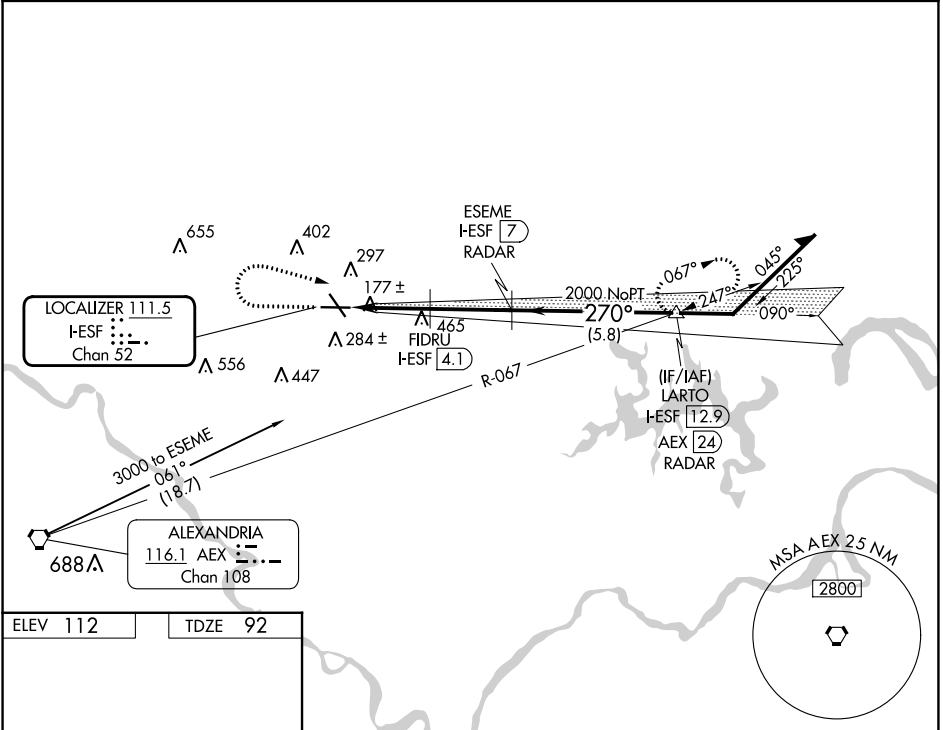


**MISSED APPROACH:** Climb to 1500 then climbing right turn to 3000 on heading 120° and on AEX VORTAC R-067 to LARTO/AEX 24.1 DME/RADAR and hold.

ESF ASOS  
**119.425**

POLK APP CON  
**125.4 254.8**

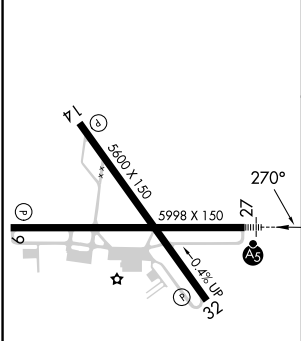
UNICOM  
**122.8** (CTAF) **0**



SC-4, 28 NOV 2024 to 26 DEC 2024

SC-4, 28 NOV 2024 to 26 DEC 2024

ELEV 112 TDZE 92



1500	3000	AEX R-067	LARTO AEX [24.1] RADAR	ESEME I-ESF [7] RADAR	Remain within 10 NM
*LOC only.					
*1060		FIDRU I-ESF [4.1]	I-ESF [1.2]	I-ESF [2.1]	GS 3.00° TCH 59
-0.9 - 2 NM		-2.9 NM			
CATEGORY	A	B	C	D	
S-ILS 27	292-½		200 (200-½)		
S-LOC 27	440-½ 348 (400-½)		440-⅝		348 (400-⅝)
CIRCLING	600-1 488 (500-1)		740-1¾ 628 (700-1¾)		760-2 648 (700-2)

REIL Rws 9, 14 and 32 **0**  
MIRL Rwy 14-32 **0**  
HIRL Rwy 9-27 **0**