

WAAS CH 61103 W27A	APP CRS 270°	Rwy Idg TDZE Apt Elev	5998 92 112
--	------------------------	-----------------------------	--

RNAV (GPS) RWY 27

ESLER RGNL (E/SF')

RNP APCH-GPS.

⚠ Circling Rwy 14, 32 NA at night. Baro-VNAV and VDP NA when using Alexandria Intl altimeter setting. For uncompensated Baro-VNAV systems, LNAV/VNAV NA below -6°C or above 54°C. When local altimeter setting not received, use Alexandria Intl altimeter setting: increase LPV DA to 327 feet; increase LNAV/VNAV DA to 457 feet and all visibility 1/8 SM; increase all MDAs 40 feet and LNAV visibility Cat C/D 1/8 SM and Circling visibility Cat D 1/4 SM. For inop MALSRS increase LNAV/VNAV all Cats visibility to 1 mile and LNAV Cat C/D visibility to 1 1/8. For inop MALSRS, when using Alexandria Intl altimeter setting, increase LNAV/VNAV all Cats visibility to 1 SM.

MALSRS

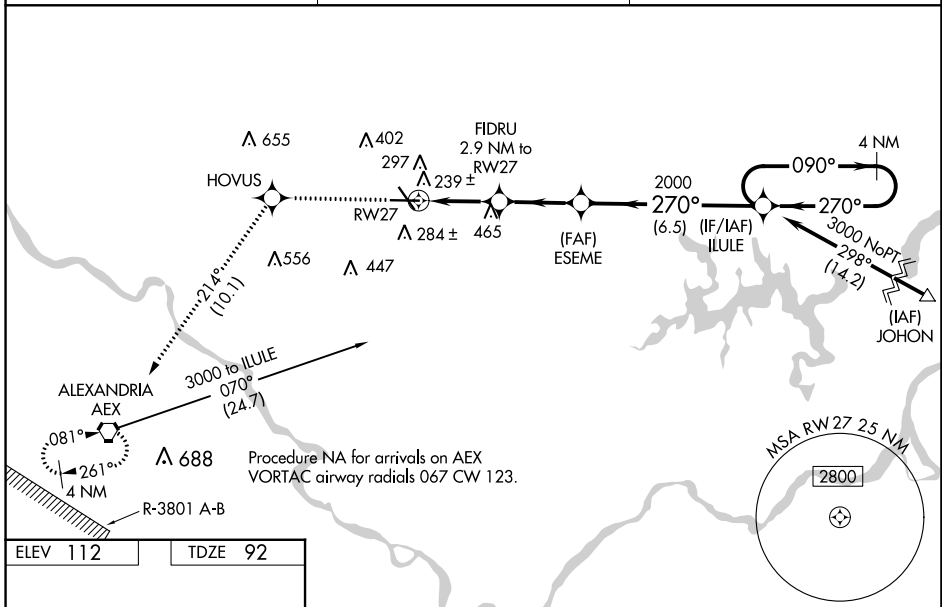


MISSED APPROACH:
Climb to 3000 direct HOVUS and on track 214° to AEX VORTAC and hold.

ESF ASOS
119.425

POLK APP CON
125.4 254.8

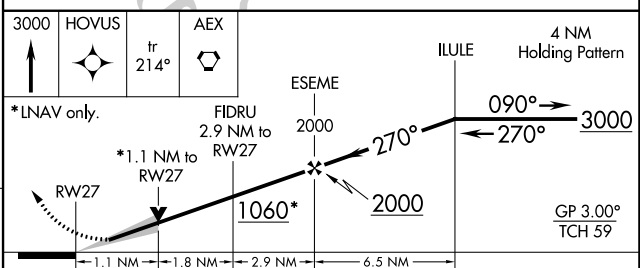
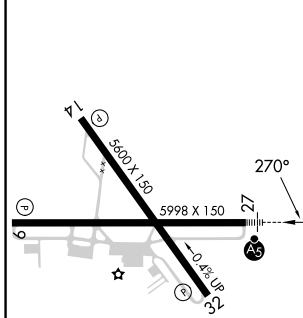
UNICOM
122.8 (CTAF) **1**



SC-4, 28 NOV 2024 to 26 DEC 2024

SC-4, 28 NOV 2024 to 26 DEC 2024

ELEV 112	TDZE 92
----------	---------



CATEGORY	A	B	C	D
LPV DA		292-1/2	200 (200-1/2)	
LNAV/VNAV DA		422-1/2	330 (400-1/2)	
LNAV MDA	500-1/2	408 (400-1/2)	500-3/4	408 (400-3/4)
CIRCLING	600-1	488 (500-1)	740-13/4 628 (700-13/4)	760-2 648 (700-2)

REIL Rws 9, 14 and 32 **1**
MIRL Rwy 14-32 **1**
HIRL Rwy 9-27 **1**

ALEXANDRIA, LOUISIANA
Amdt 2B 15JUL21

31°24'N-92°18'W

RNAV (GPS) RWY 27

ESLER RGNL (E/SF')