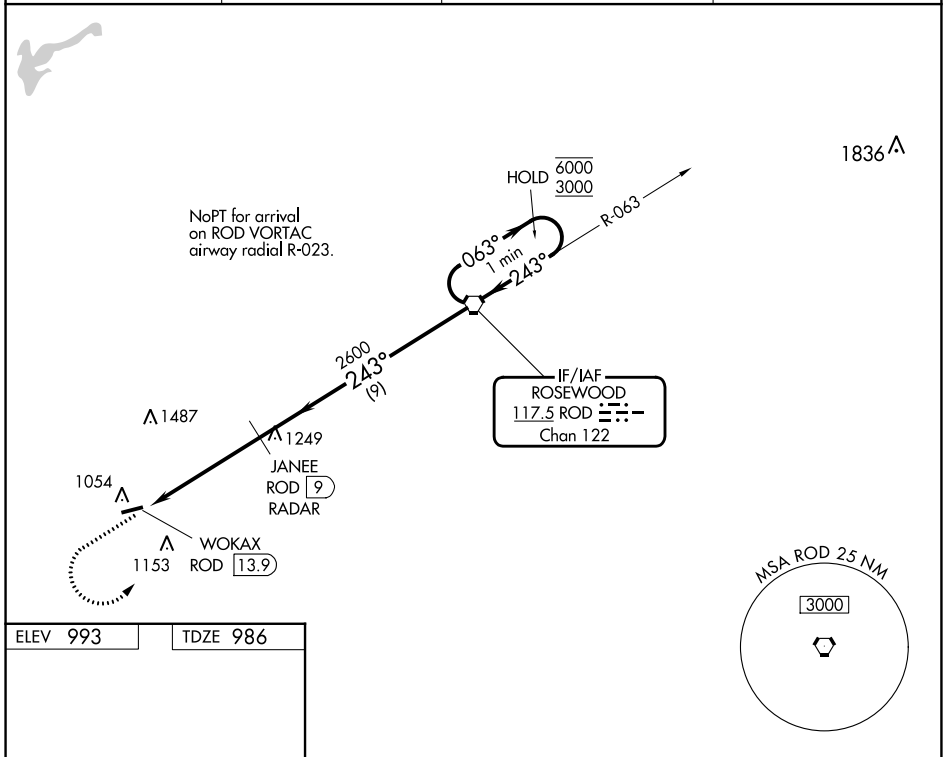


VORTAC ROD <b>117.5</b> Chan <b>122</b>	APP CRS <b>243°</b>	Rwy Idg TDZE Aprt Elev	<b>3998</b> <b>986</b> <b>993</b>
---	------------------------	------------------------------	---

# VOR RWY 26

PIQUA/HARTZELL FLD (I17)

DME or RADAR required.		MISSED APPROACH: Climb to 3000 then left turn direct ROD VORTAC and hold.	
<p>▼ Rwy 26 helicopter visibility reduction below 3/4 SM NA. ▲ NA Use James M Cox Dayton Intl altimeter setting.</p>		DAY ASOS <b>125.8</b>	VES AWOS-3T <b>125.9</b>
		COLUMBUS APP CON <b>134.45 294.5 352.05</b>	UNICOM <b>123.0 (CTAF) 0</b>



ELEV 993	TDZE 986
----------	----------

MIRL Rwy 8-26  
REIL Rws 8 and 26

FAF to MAP 4.9 NM					
Knots	60	90	120	150	180
Min:Sec	4:54	3:16	2:27	1:58	1:38

3000

ROD

JANEE 1249 ROD 9 RADAR

WOKAX 1153 ROD 13.9

2600

3.01° TCH 37

4.9 NM

9 NM

ROD VORTAC

One Minute Holding Pattern

063° 6000

243° 3000

CATEGORY	A	B	C	D
S-26	1500-1	514 (600-1)	1500-1 3/8	514 (600-1 3/8)
☑ CIRCLING	1500-1 507 (600-1)	1560-1 567 (600-1)	1560-1 1/2 567 (600-1 1/2)	1880-3 887 (900-3)

EC-2, 28 NOV 2024 to 26 DEC 2024

EC-2, 28 NOV 2024 to 26 DEC 2024