

VOR FFT 109.4	APP CRS 251°	Rwy Idg TDZE Apt Elev	5506 790 812
-------------------------	------------------------	-----------------------------	---

VOR RWY 25

CAPITAL CITY (F'FT)

▽ Rwy 25 helicopter visibility reduction below 3/4 SM NA. When local altimeter setting not received, use Lexington altimeter setting and increase all MDA 80 feet, increase S-25 Cat C/D visibility 1/2 mile, and increase Circling Cat C 1/2 mile, and Cat D 1/4 mile.

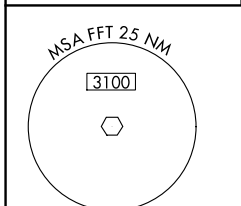
MISSED APPROACH:
Climb to 3100 then left turn direct HYK VOR/DME and hold.

ASOS
119.275

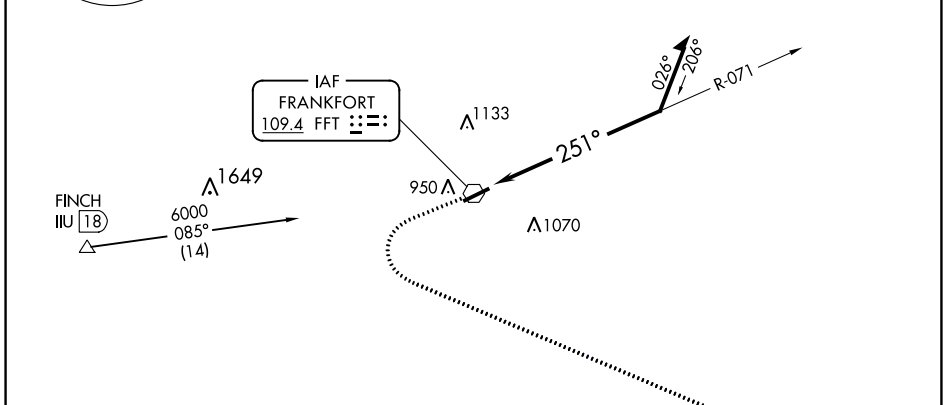
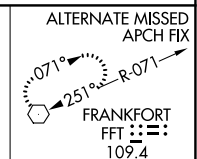
LEXINGTON APP CON
120.75 298.9

CLNC DEL
118.65

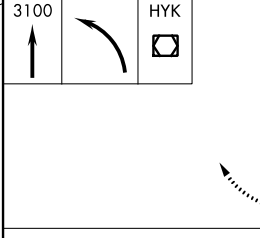
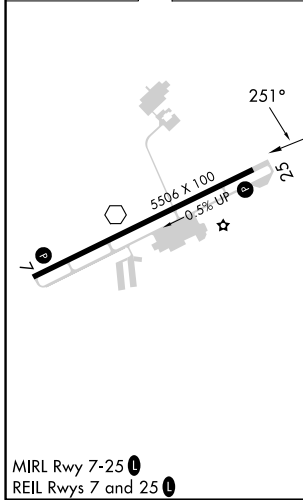
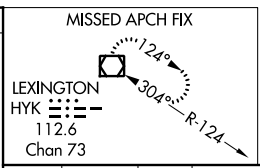
UNICOM
122.8 (CTAF) 0



DME REQUIRED



ELEV 812 TDZE 790



Remain within 10 NM

CATEGORY	A	B	C	D
S-25	1440-1	650 (700-1)	1440-1 7/8	650 (700-1 7/8)
<input checked="" type="checkbox"/> CIRCLING	1440-1	628 (700-1)	1440-1 7/8 628 (700-1 7/8)	1440-2 628 (700-2)

MIRL Rwy 7-25
REIL Rws 7 and 25

FRANKFORT, KENTUCKY
Amdt 3D 20JUN19

38°11'N-84°54'W

VOR RWY 25

SE-1, 28 NOV 2024 to 26 DEC 2024

SE-1, 28 NOV 2024 to 26 DEC 2024