


APP CRS 132°	Rwy ldg TDZE Apt Elev	7510 46 46
------------------------	-----------------------------	---------------------------------------

RNAV (RNP) Z RWY 13

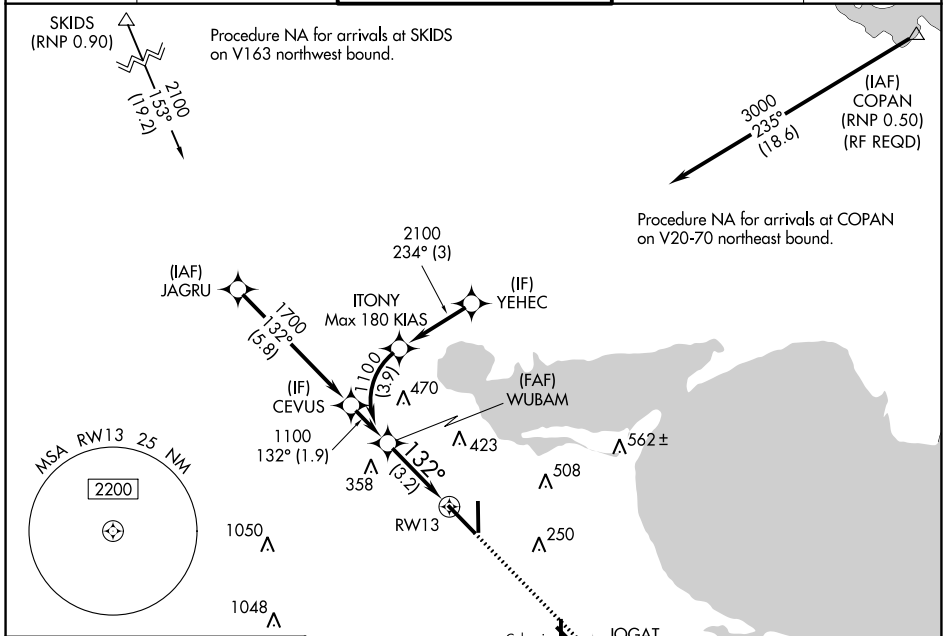
CORPUS CHRISTI INTL (CRP)

▼ For uncompensated Baro-VNAV systems, procedure NA below -1°C (31°F) or above 54°C (130°F). GPS required.

MALSR 

MISSED APPROACH: Climb to 2000 on track 132° to JOGAT and on track 178° to SOLON and hold.

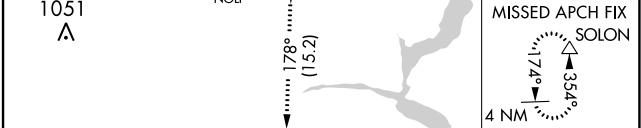
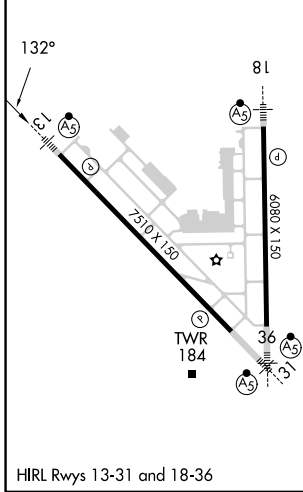
ATIS 126.8	CORPUS APP CON 120.9 348.725	CORPUS TOWER 119.4 257.8	GND CON 121.9 269.15	CLNC DEL 118.55
----------------------	--	------------------------------------	--------------------------------	---------------------------





SC-3, 28 NOV 2024 to 26 DEC 2024

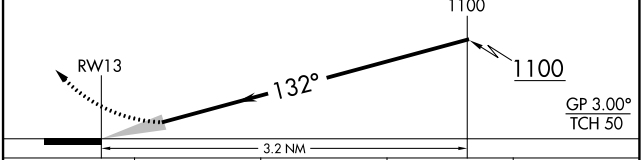
SC-3, 28 NOV 2024 to 26 DEC 2024

ELEV 46	D	TDZE 46
---------	----------	---------



2000	JOGAT	SOLON
tr 132°		tr 178°
		

See planview for multiple IF locations.



CATEGORY	A	B	C	D
RNP 0.30 DA		394/30	348 (400-%)	

AUTHORIZATION REQUIRED