

WAAS CH 77539 W01A	APP CRS 004°	Rwy Idg TDZE 620 Apt Elev 620	4003
--	------------------------	---	-------------

RNAV (GPS) RWY 1

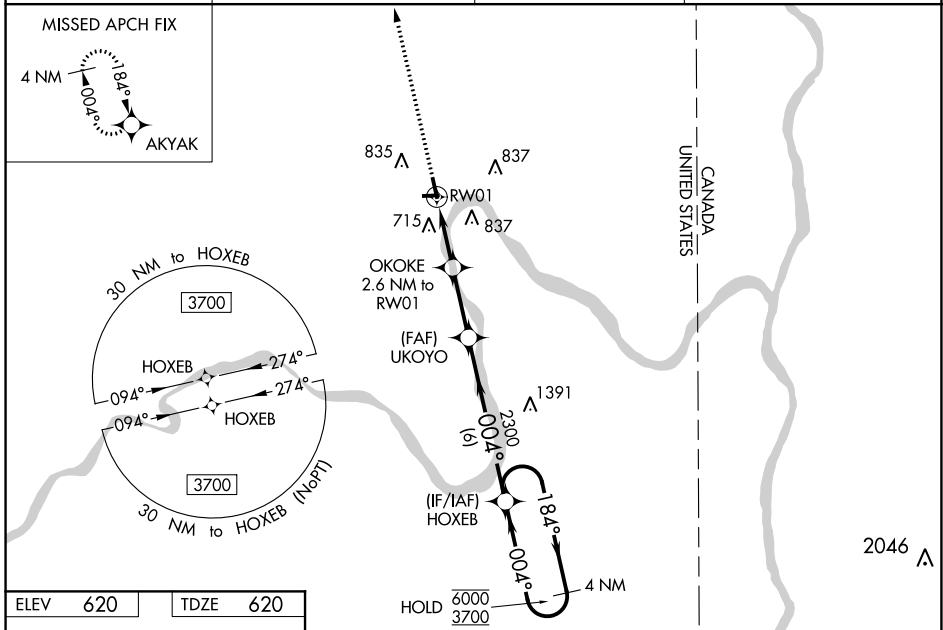
CARIBOU MUNI (CAR)

RNP APCH.

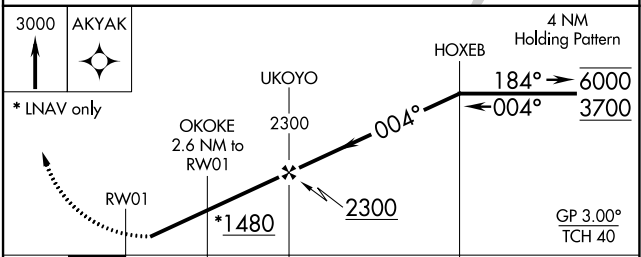
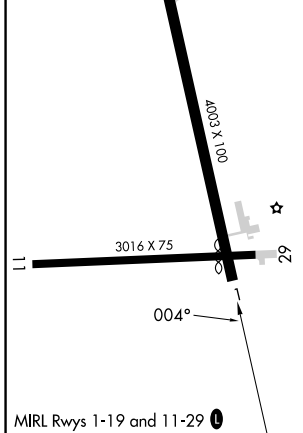
⚠ Rwy 1 helicopter visibility reduction below 1 SM NA. Baro-VNAV NA when using Presque Isle altimeter setting. For uncompensated Baro-VNAV systems, LNAV/VNAV NA below -21°C or above 54°C. Straight-in Rwy 1 NA at night. Circling Rwy 1, 11, 29 NA at night. When local altimeter setting not received, use Presque Isle altimeter setting and increase all DAs 49 feet and all MDAs 60 feet. Increase LNAV MDA Cat C & D visibility 1/8 SM, Circling Cat D visibility 1/4 SM.

MISSED APPROACH:
Climb to 3000 direct AKYAK and hold.

ASOS 135.125	BOSTON CENTER 124.75 239.05	CLNC DEL 124.75	UNICOM 122.8 (CTAF) 0
------------------------	---------------------------------------	---------------------------	---------------------------------



ELEV 620	TDZE 620
----------	----------



CATEGORY	A	B	C	D
LPV DA		870-1	250 (300-1)	
LNAV/VNAV DA		872-1	252 (300-1)	
LNAV MDA		980-1	360 (400-1)	
C CIRCLING	1140-1	520 (600-1)	1140-1½ 520 (600-1½)	1400-2½ 780 (800-2½)

NE-1, 28 NOV 2024 to 26 DEC 2024

NE-1, 28 NOV 2024 to 26 DEC 2024