

VOR/DME TBD 117.15 Chan 118(Y)	APP CRS 121°	Rwy Idg 4999 TDZE 9 Apt Elev 10
--	------------------------	--

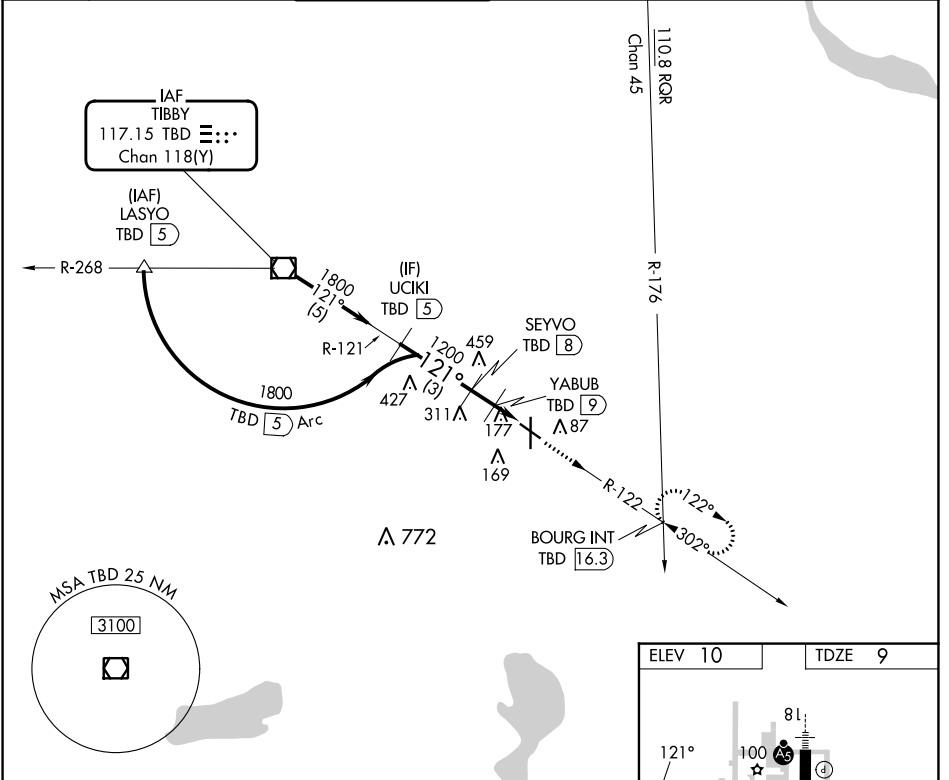
COPTER VOR/DME RWY 12

HOUMA-TERREBONNE (HUM)

⚠ When local altimeter setting not received, use Louis Armstrong New Orleans Intl altimeter setting and increase MDA 80 feet.

MISSED APPROACH: Climb to 1800 via TBD VOR/DME R-122 to BOURG INT/16.3 DME and hold.

ATIS 120.25	NEW ORLEANS APP CON 118.9 350.35	HOUMA TOWER ★ 125.3 (CTAF) 346.3	GND CON 123.875	CLNC DEL 118.9 (When twr closed)	UNICOM 122.95
-----------------------	--	--	---------------------------	---	-------------------------



SC-4, 28 NOV 2024 to 26 DEC 2024

SC-4, 28 NOV 2024 to 26 DEC 2024

