

WAAS CH 99413 W18A	APP CRS 179°	Rwy Idg 6509 TDZE 8 Apt Elev 9
--	------------------------	---

RNAV (GPS) RWY 18

HOUMA-TERREBONNE (HUM)

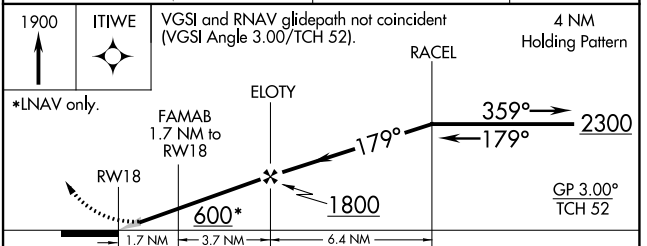
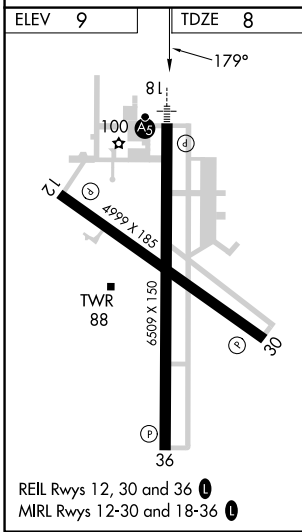
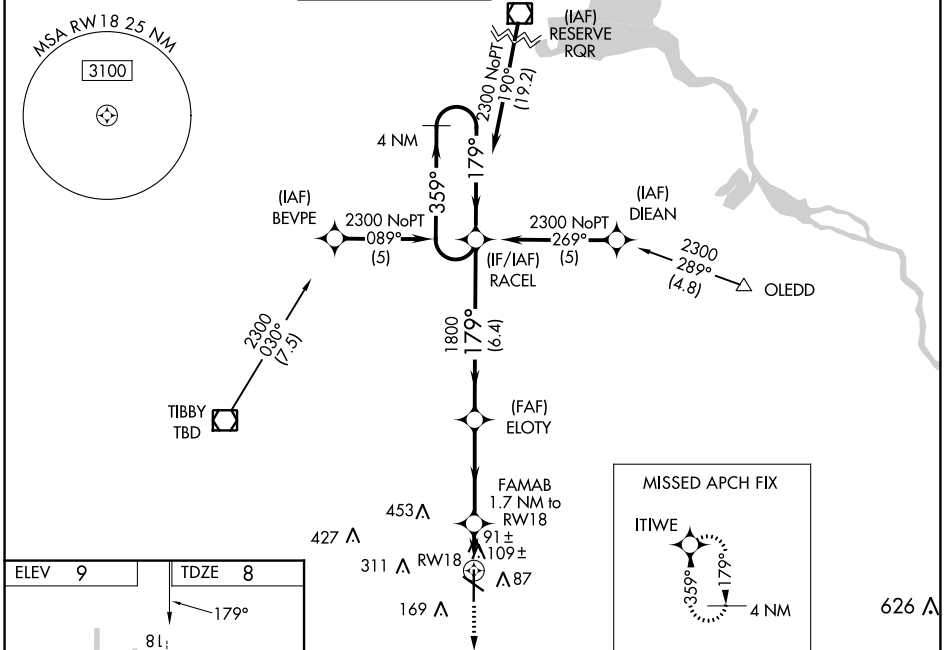
⚠ Baro-VNAV NA when using Louis Armstrong New Orleans Intl altimeter setting. For uncompensated Baro-VNAV systems, LNAV/VNAV NA below -15°C (5°F) or above 49°C (120°F). DME/DME RNP-0.3 NA. When local altimeter setting not received, use Louis Armstrong New Orleans Intl altimeter setting: increase LPV DA to 285, increase LNAV/VNAV DA to 526 and all visibilities $\frac{1}{8}$ SM; increase all MDAs 80 feet and visibility Cats C and D $\frac{1}{4}$ SM. For inop ALS when using Louis Armstrong New Orleans Intl altimeter setting increase all LPV visibilities to $\frac{7}{8}$ SM, increase all LNAV/VNAV visibilities and LNAV Cats C and D visibility to $\frac{1}{8}$ SM.

MALSR



MISSED APPROACH:
Climb to 1900 direct
ITWIE and hold.

ATIS 120.25	NEW ORLEANS APP CON 118.9 350.35	HOUMA TOWER ★ 125.3 (CTAF) 346.3	GND CON 123.875	CLNC DEL 118.9 (When twr closed)	UNICOM 122.95
-----------------------	--	--	---------------------------	---	-------------------------



CATEGORY	A	B	C	D
LPV DA		208- $\frac{1}{2}$	200 (200- $\frac{1}{2}$)	
LNAV/VNAV DA		449- $\frac{7}{8}$	441 (500- $\frac{7}{8}$)	
LNAV MDA	440- $\frac{1}{2}$	432 (500- $\frac{1}{2}$)	440- $\frac{3}{4}$	432 (500- $\frac{3}{4}$)
C CIRCLING	480-1	471 (500-1)	760- $\frac{2}{4}$ 751 (800- $\frac{2}{4}$)	760- $\frac{2}{2}$ 751 (800- $\frac{2}{2}$)

SC-4, 28 NOV 2024 to 26 DEC 2024

SC-4, 28 NOV 2024 to 26 DEC 2024