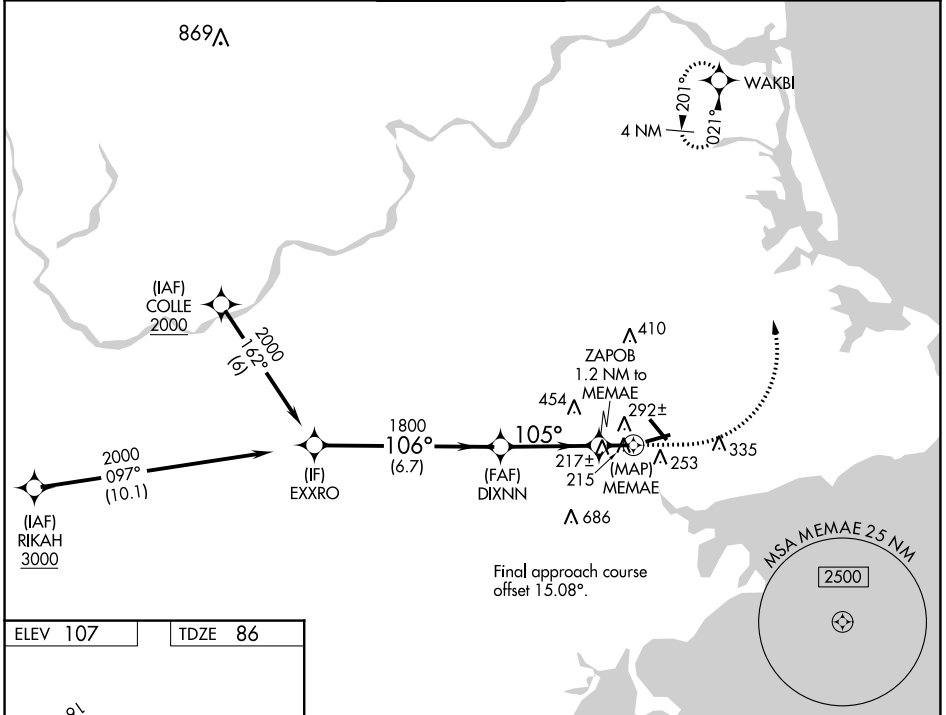


WAAS CH <b>65640</b> <b>W09A</b>	APP CRS <b>105°</b>	Rwy Idg TDZE Apt Elev	<b>4755</b> <b>86</b> <b>107</b>
----------------------------------------	------------------------	-----------------------------	----------------------------------------

# RNAV (GPS) RWY 9

BEVERLY RGNL (BVY)

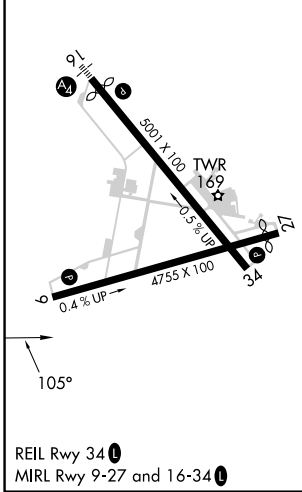
RNP APCH - GPS.		MISSED APPROACH: Climb to 600 then climbing left turn to 2000 direct WAKBI and hold.		
<p>▼ Rwy 9 helicopter visibility reduction below 1 SM NA. ▲ Straight-in Rwy 9 NA at night, Circling Rwy 9 NA at night.</p>				
ATIS <b>119.2</b>	BOSTON APP CON <b>124.4 279.6</b>	BEVERLY TOWER★ <b>125.2 (CTAF) 0</b>	GND CON <b>121.6</b>	UNICOM <b>122.95</b>



NE-1, 28 NOV 2024 to 26 DEC 2024

NE-1, 28 NOV 2024 to 26 DEC 2024

ELEV 107	TDZE 86
----------	---------



BEVERLY, MASSACHUSETTS  
Amdt 1 28DEC23

VGSIs and descent angles not coincident (VGSIs Angle 3.00/TCH 43).		600	2000	WAKBI
		↑	↪	✦
CATEGORY	A	B	C	D
LP MDA	480-1	394 (400-1)	480-1 $\frac{1}{8}$	394 (400-1 $\frac{1}{8}$ )
LNAV MDA	560-1	474 (500-1)	560-1 $\frac{3}{8}$	474 (500-1 $\frac{3}{8}$ )
☑ CIRCLING	600-1	493 (500-1)	820-2 713 (800-2)	820-2 $\frac{1}{4}$ 713 (800-2 $\frac{1}{4}$ )

42°35'N-70°55'W

BEVERLY RGNL (BVY)  
**RNAV (GPS) RWY 9**