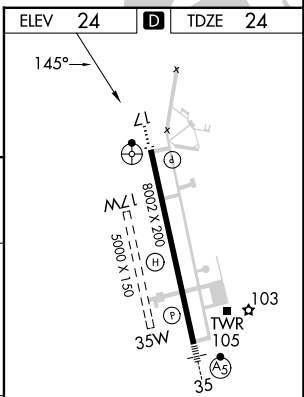
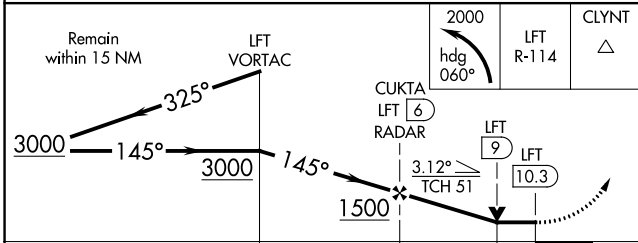
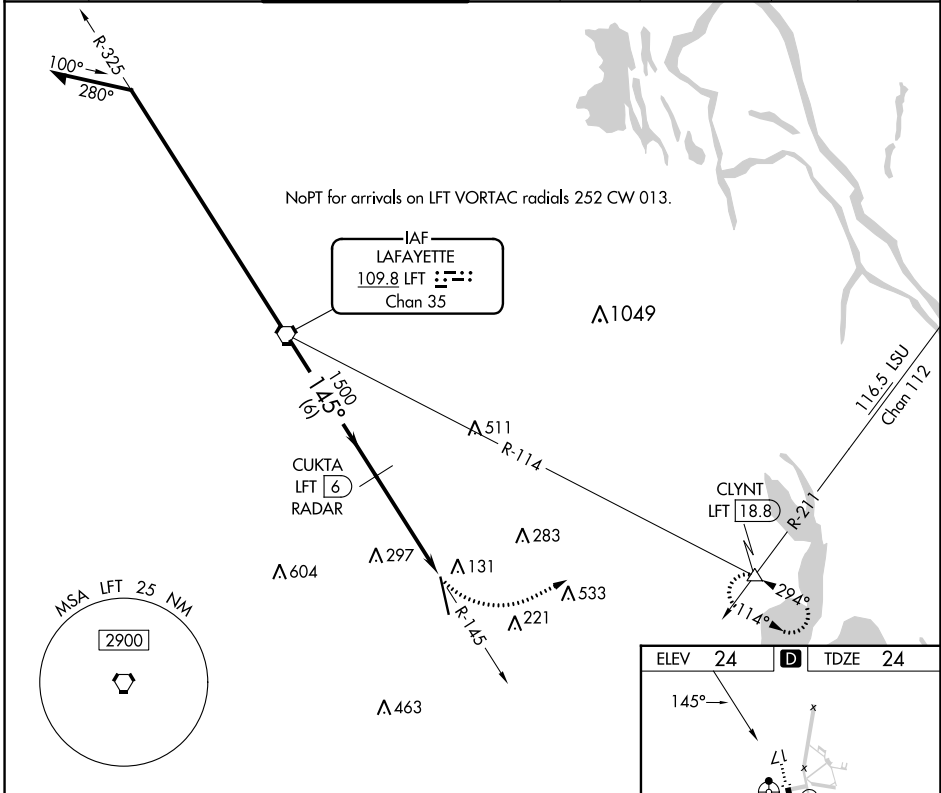


VORTAC LFT <b>109.8</b> Chan 35	APP CRS <b>145°</b>	Rwy Idg TDZE Apt Elev	<b>8002</b> <b>24</b> <b>24</b>
---------------------------------------	------------------------	-----------------------------	---------------------------------------

# VOR or TACAN RWY 17

ACADIANA RGNL (A.R.A)

<p><b>▼</b> Circling NA to Rwy's 17W and 35W.  <b>▲</b> DME or RADAR required.                  For inop ALS, increase S-17 Cat E visibility to 1 3/8 mile.</p>		<p>ODALS  </p>	<p>MISSED APPROACH: Climbing left turn to 2000 on heading 060° and LFT VORTAC R-114 to CLYNT INT/18.8 DME and hold.</p>				
ASOS <b>133.325</b>	LAFAYETTE APP CON* <b>121.1 268.7</b>	ACADIANA TOWER* <b>125.0 (CTAF) 0 239.3</b>	GND CON <b>121.7</b>	CLNC DEL <b>121.7</b>	CLNC DEL <b>118.05</b> (when twr closed)	UNICOM <b>122.95</b>	<b>122.7</b>



CATEGORY	A		B		C		D		E		
S-17	500-3/4		476 (500-3/4)		500-1 1/4		476 (500-1 1/4)				
<b>C</b> CIRCLING	500-1		476 (500-1)		600-1 1/2 576 (600-1 1/2)		680-2 656 (700-2)		900-3 876 (900-3)		
HIRL Rwy 17-35 <b>Ⓛ</b>			Seaway Rwy 17W-35W <b>Ⓛ</b>			FAF to MAP 4.3 NM					
Knots			60			90			120		
Min:Sec			4:18			2:52			2:09		
			150			180			1:43		
			1:26								

SC-4, 28 NOV 2024 to 26 DEC 2024

SC-4, 28 NOV 2024 to 26 DEC 2024