

APP CRS	Rwy Idg	<b>3635</b>
<b>301°</b>	TDZE	<b>1108</b>
	Apt Elev	<b>1110</b>

# RNAV (GPS) RWY 30

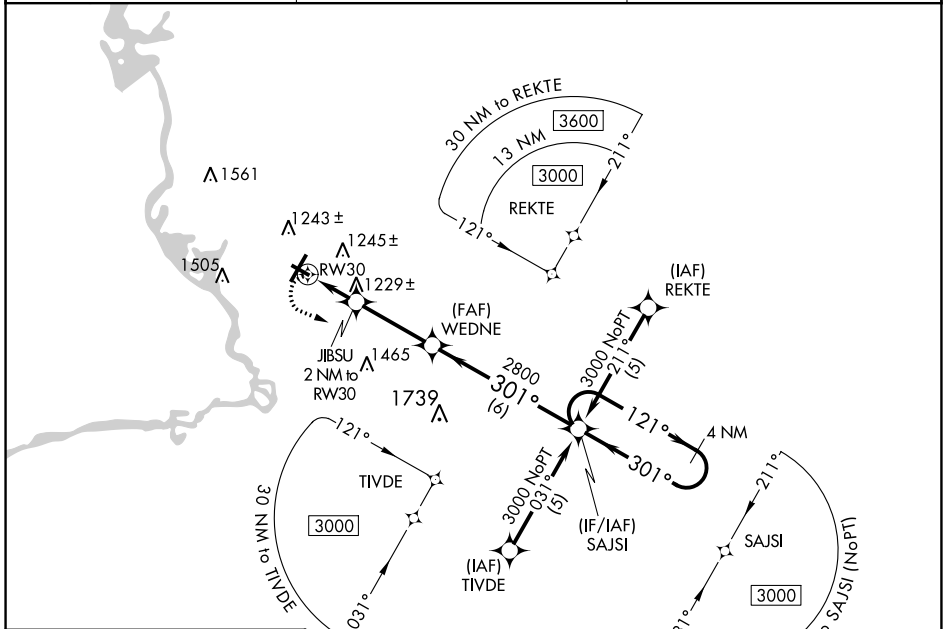
STEVENS POINT MUNI (STE)

RNP APCH - GPS.

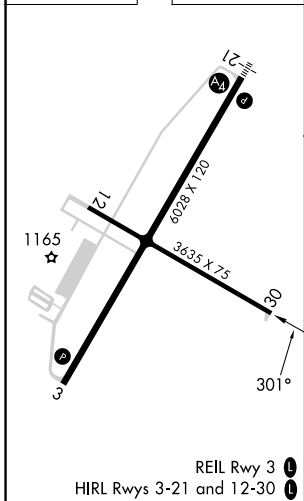
**▼** Rwy 30 helicopter visibility reduction below 3/4 SM NA. When local altimeter setting not received, use Mosinee altimeter setting and increase all MDA 60 feet, increase LNAV Cat C and D visibility 1/4 SM. VDP NA when using Mosinee altimeter setting.

**MISSED APPROACH:**  
Climbing left turn to 3000 direct SAJSI and hold.

AWOS-3 <b>119.275</b>	MINNEAPOLIS CENTER <b>124.4 317.7</b>	UNICOM <b>122.7 (CTAF)</b>
--------------------------	--	-------------------------------



ELEV 1110	TDZE 1108
-----------	-----------



	4 NM Holding Pattern SAJSI			
	WEDNE JIBSU 2 NM to RW30 1.2 NM to RW30 1780 3.04° TCH 40 2800 301° heading 121° heading 3000			
CATEGORY	A	B	C	D
LNAV MDA	1520-1	412 (500-1)	1520-1 1/8	412 (500-1 1/8)
<b>CIRCLING</b>	1580-1 470 (500-1)	1600-1 490 (500-1)	1860-2 1/4 750 (800-2 1/4)	1860-2 1/2 750 (800-2 1/2)

EC-3, 28 NOV 2024 to 26 DEC 2024

EC-3, 28 NOV 2024 to 26 DEC 2024