

EC-1, 28 NOV 2024 to 26 DEC 2024

DEPARTURE ROUTE DESCRIPTION

TAKEOFF RUNWAYS 9L/R: Climb on heading 095° or as assigned by ATC, thence....  
TAKEOFF RUNWAYS 27L/R: Climb on heading 275° or as assigned by ATC, thence....

....for RADAR vectors to JWELS, then on track 218° to SNDRS, then on (transition). Maintain ATC assigned altitude, expect filed altitude 10 minutes after departure.

BGHRT TRANSITION (SNDRS3.BGHRT):  
TORRR TRANSITION (SNDRS3.TORRR):

NOTE: Turbojet departures at/above 10000, maintain 280K until advised by ATC.

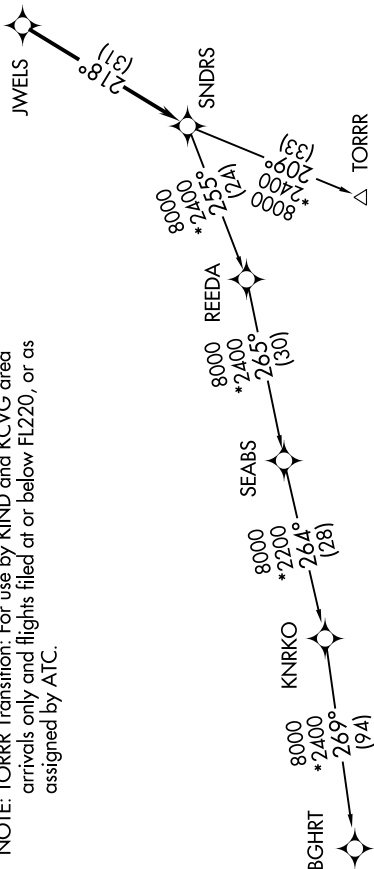
NOTE: TORRR Transition: For use by KIND and KCVG area arrivals only and flights filed at or below FL220, or as assigned by ATC.

TOP ALTITUDE:  
ASSIGNED BY ATC

RNAV-1 DME/DME/IRU or GPS.  
RADAR required.

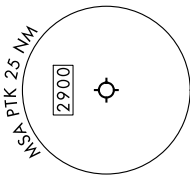
DETROIT DEP CON 132.35 284.0  
ATIS 125.025  
CLNC DEL 118.25  
GND CON 121.9  
PONTIAC TOWER\* 120.5 (CTAF)

N



TAKEOFF MINIMUMS:

Rwys 18, 36: NA - Environmental.  
Rwys 9L/R, 27L/R: Standard.



NOTE: Chart not to scale.

EC-1, 28 NOV 2024 to 26 DEC 2024