


| | | | |
|--|------------------------|-----------------------------|---|
| WAAS CH 60909 W29A | APP CRS 291° | Rwy Idg TDZE Apt Elev | 6525 871 871 |
|--|------------------------|-----------------------------|---|

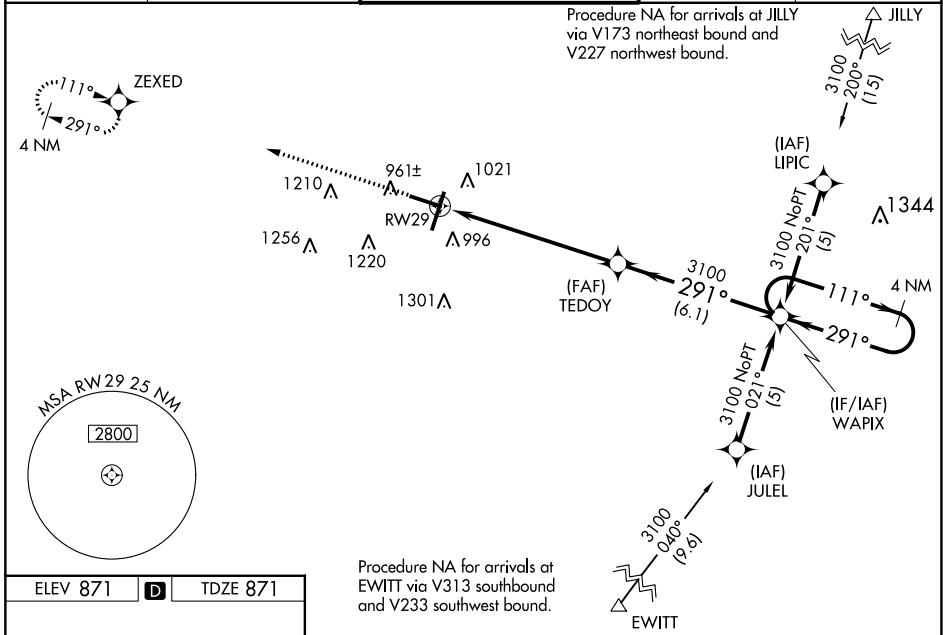
RNAV (GPS) RWY 29

CENTRAL IL RGNL/BLOOMINGTON-NORMAL (BMI)

⚠ For uncompensated Baro-VNAV systems, LNAV/VNAV NA below -16°C (4°F) or above 54°C (130°F). DME/DME RNP-0.3 NA. Baro-VNAV and VDP NA when using General Downing-Peoria Intl altimeter setting. When local altimeter setting not received, use General Downing-Peoria Intl altimeter setting: increase all DA 116 feet and all MDA 120 feet; increase LPV all Cats visibility to RVR 3500, LNAV/VNAV all Cats and LNAV Cats C/D visibility 3/8 mile, and Circling Cats C/D visibility 1/4 mile. For inoperative MALSRs when using General Downing-Peoria Intl Regional altimeter setting increase LPV all Cats visibility 1/2 mile, and LNAV Cat C/D visibility 3/8 mile.

MALSR  MISSED APPROACH: Climb to 2500 direct ZEXED and hold.

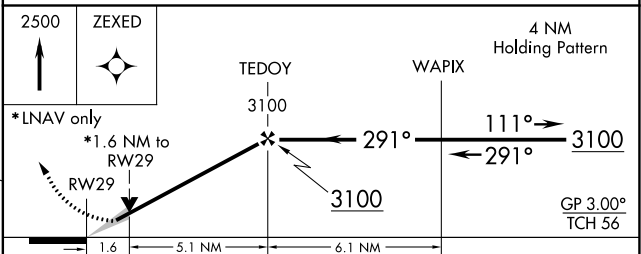
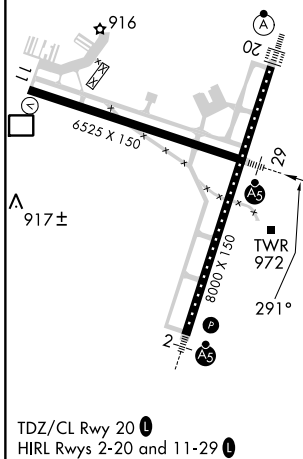
| | | | | |
|------------------------|---|--|--------------------------|-------------------------|
| ATIS 119.575 | SAINT LOUIS APP CON 128.725 256.9 | BLOOMINGTON TOWER * 124.6 (CTAF) 269.575 | GND CON 121.65 | UNICOM 122.95 |
|------------------------|---|--|--------------------------|-------------------------|



EC-3, 28 NOV 2024 to 26 DEC 2024

EC-3, 28 NOV 2024 to 26 DEC 2024

| | | |
|----------|----------|----------|
| ELEV 871 | D | TDZE 871 |
|----------|----------|----------|



| CATEGORY | A | B | C | D |
|-------------------|---------|---------------|-------------------------------|-------------------------------|
| LPV DA | | 1121/24 | 250 (300-1/2) | |
| LNAV/VNAV DA | | 1304/50 | 433 (500-1) | |
| LNAV MDA | 1460/24 | 589 (600-1/2) | 1460-1 1/4 | 589 (600-1 1/4) |
| C CIRCLING | 1460-1 | 589 (600-1) | 1620-2 1/4 749 (800-2 1/4) | 1620-2 1/2 749 (800-2 1/2) |