

VORTAC PXV 113.3 Chan 80	APP CRS 150°	Rwy Idg TDZE Apt Elev	N/A N/A 387
--	------------------------	-----------------------------	--

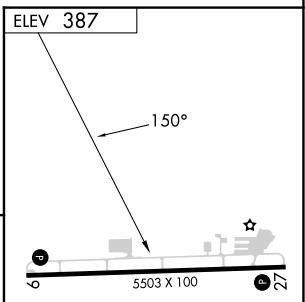
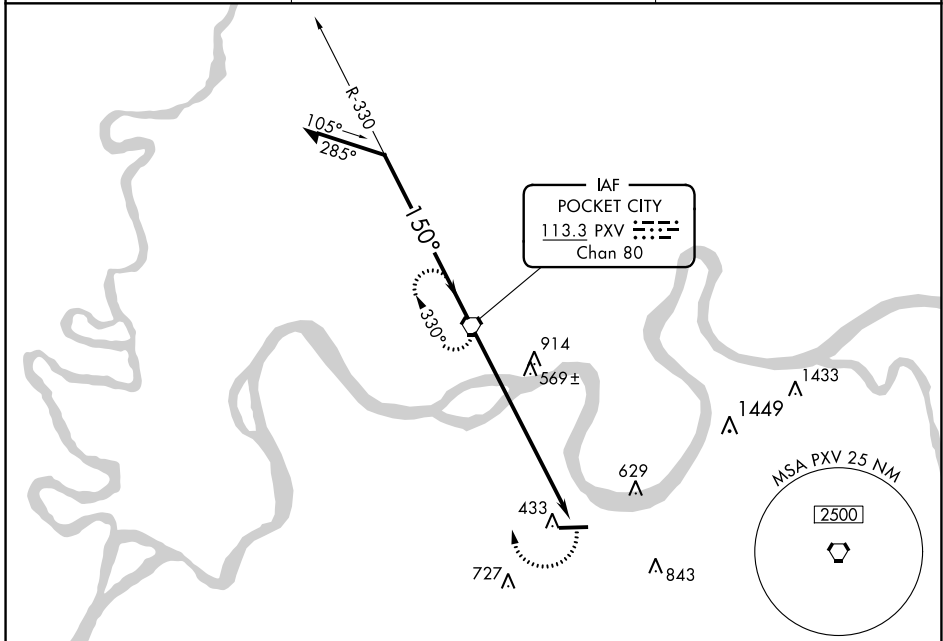
VOR-A

HENDERSON CITY-COUNTY (EHR)

NA When local altimeter setting not received, use Evansville altimeter setting and increase all MDAs 80 feet, and increase Circling Cats C/D visibility ¼ SM.

MISSED APPROACH: Climbing right turn to 2100 direct PXV VORTAC and hold.

AWOS-3PT 118.85	EVANSVILLE APP CON ★ 124.025 257.8	UNICOM 122.8 (CTAF) 0
---------------------------	--	--



Remain within 10 NM

PXV VORTAC

2100

330°

150°

2100

7.9 NM

ELEV 387

150°

5503 X 100

REIL Rwys 9 and 27 **0**

MIRL Rwy 9-27 **0**

CATEGORY	A		B		C		D		FAF to MAP 7.9 NM				
	920-1	533 (600-1)	1040-1¾	653 (700-1¾)	1200-2¾	813 (900-2¾)	Knots	60	90	120	150	180	
CIRCLING							Min:Seq	7:54	5:16	3:57	3:10	2:38	

SE-1, 28 NOV 2024 to 26 DEC 2024

SE-1, 28 NOV 2024 to 26 DEC 2024