

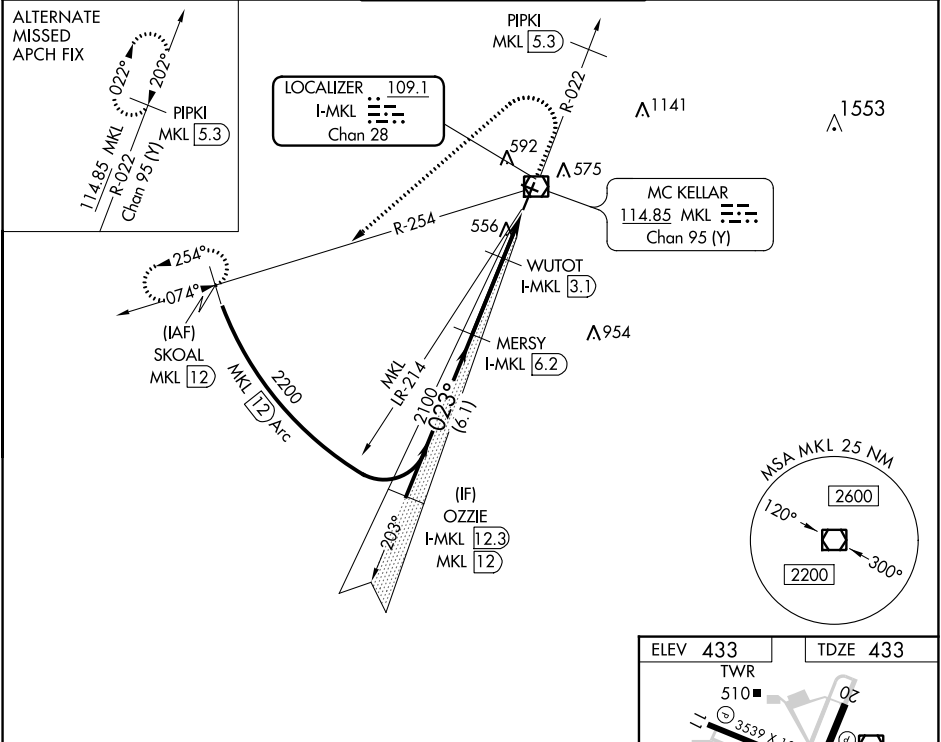
LOC/DME I-MKL 109.1 Chan 28	APP CRS 023°	Rwy Idg TDZE Apt Elev 6005 433 433
--	------------------------	--

ILS or LOC RWY 2

MC KELLAR-SIPES RGNL (MKL)

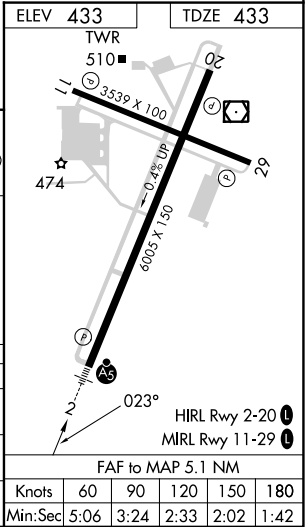
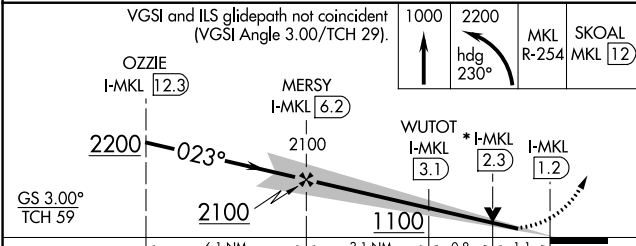
DME required. RADAR required for procedure entry.		MALS R	MISSED APPROACH: Climb to 1000 then climbing left turn to 2200 on heading 230° and MKL VOR/DME R-254 to SKOAL/MKL 12 DME and hold.
<p>▼ Rwy 2 helicopter visibility reduction below ¾ SM NA. For inop ALS, increase S-LOC 2 Cat A/B visibility to 1 SM and Cat C/D visibility 1½ SM.</p> <p>▲</p>			

ASOS 119.325	MEMPHIS CENTER 134.65 316.15	JACKSON TOWER ★ 127.15 (CTAF) 0 249.95	GND CON 120.9	UNICOM 122.95
------------------------	--	--	-------------------------	-------------------------



SE-1, 28 NOV 2024 to 26 DEC 2024

SE-1, 28 NOV 2024 to 26 DEC 2024



CATEGORY	A	B	C	D
S-ILS 2		770-¾	337 (400-¾)	
S-LOC 2		820-¾	387 (400-¾)	
CIRCLING	900-1 467 (500-1)	920-1 487 (500-1)	960-1½ 527 (600-1½)	1100-2 667 (700-2)

FAF to MAP 5.1 NM	Knots	60	90	120	150	180
	Min:Sec	5:06	3:24	2:33	2:02	1:42