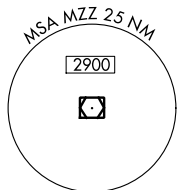
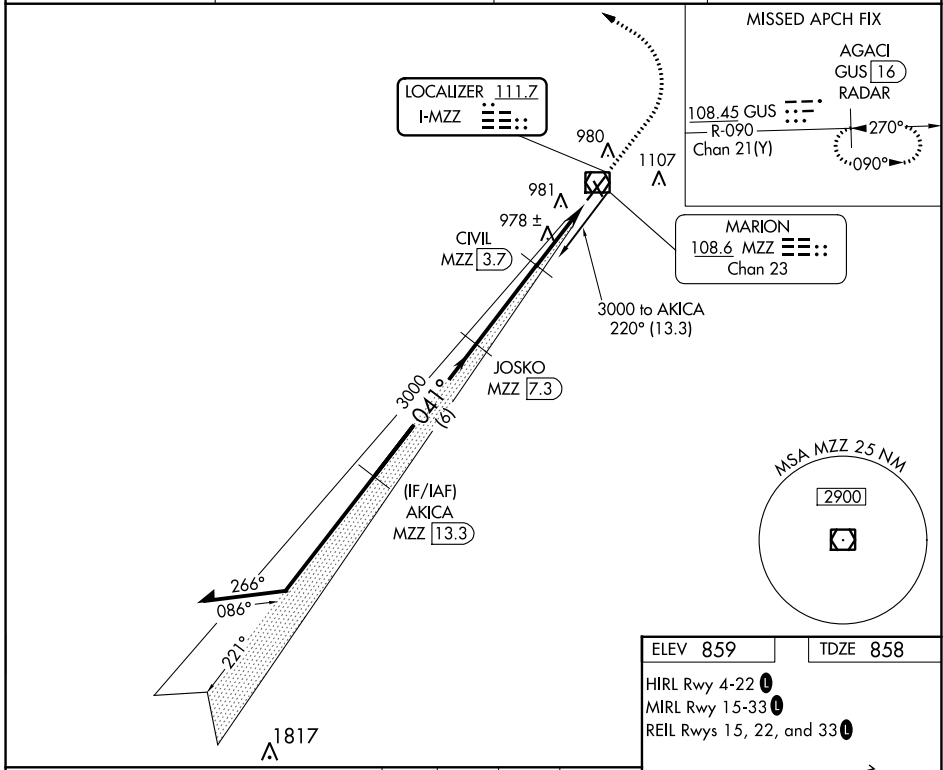


LOC I-MZZ <b>111.7</b>	APP CRS <b>041°</b>	Rwy Idg TDZE Apt Elev	<b>6011</b> <b>858</b> <b>859</b>
---------------------------	------------------------	-----------------------------	-----------------------------------------

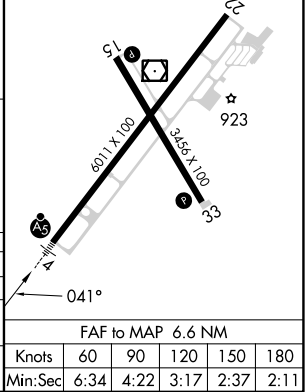
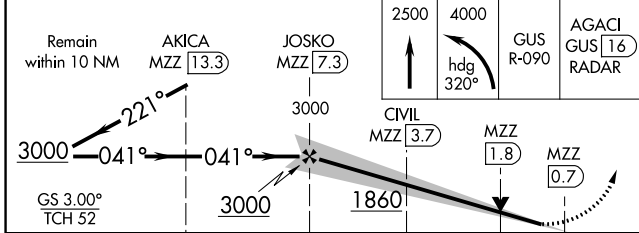
# ILS or LOC RWY 4

MARION MUNI - MCKINNEY FLD (MZZ)

DME required.		MALSR MISSED APPROACH: Climb to 2500 then climbing left turn to 4000 on heading 320° to intercept GUS VORTAC R-090 to AGACI/GUS VORTAC 16 DME/RADAR and hold.	
DME from MZZ VOR/DME. Simultaneous reception of I-MZZ and MZZ DME required. For inop ALS, increase S-LOC 4 Cats C and D visibility to 1½ SM. Circling Rwy 15 NA at night.			
AWOS-3 <b>108.6</b>	GRISSOM APP CON ★ <b>121.05 338.275</b>	CLNC DEL <b>120.0</b>	UNICOM <b>122.7</b> (CTAF)



ELEV 859	TDZE 858
HIRL Rwy 4-22	MIRL Rwy 15-33
REIL Rwy 15, 22, and 33	



CATEGORY	A	B	C	D
S-ILS 4		1058-½	200 (200-½)	
S-LOC 4	1260-½	402 (500-½)	1260-¾	402 (500-¾)
CIRCLING	1300-1 441 (500-1)	1320-1 461 (500-1)	1420-1½ 561 (600-1½)	1500-2 641 (700-2)

FAF to MAP 6.6 NM					
Knots	60	90	120	150	180
Min:Sec	6:34	4:22	3:17	2:37	2:11

# ILS or LOC RWY 4

EC-2, 28 NOV 2024 to 26 DEC 2024

EC-2, 28 NOV 2024 to 26 DEC 2024