

RNAV (GPS) RWY 32L

WAAS Chan 50085 W32A	APCH CRS 322°	Rwy Ildg 13,501 TDZE 227 Arprt Elev 228
--	-------------------------	--

AL-5067 [USN]

LEMOORE NAS (REEVES FIELD) (KNLC)

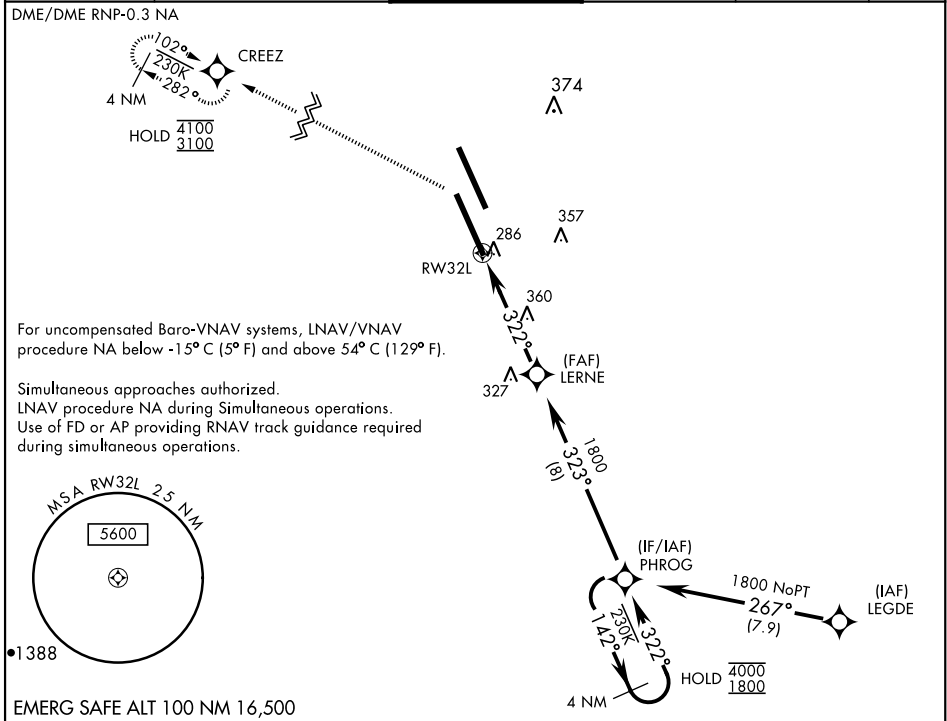
ALSF-2

 MISSED APPROACH: Climb to 1000, then climbing left turn to 3100 direct CREEZ and hold.

* When ALS inop, increase vis to ¼ mile.

 ** When ALS inop, increase CAT AB vis to 1 mile; CAT CD vis to 1¼ miles.

ATIS ★ 121.575 327.15	APP CON 124.1 269.025 (N) 118.15 269.025 (S)	TOWER ★ 128.3 340.2	GND CON 121.65 305.2	CLNC DEL 124.1 371.9	ASR/PAR
---------------------------------	--	-------------------------------	--------------------------------	--------------------------------	---------



ELEV 228	TDZE 227	1000 3100 CREEZ																													
TDZL/CL Rwy 32L REIL all rwwys HIRL all rwwys		<table border="1"> <thead> <tr> <th>CATEGORY</th> <th>A</th> <th>B</th> <th>C</th> <th>D</th> </tr> </thead> <tbody> <tr> <td>LPV DA *</td> <td colspan="4">427-½ 200 (200-½)</td> </tr> <tr> <td>LNAV/VNAV DA *</td> <td colspan="4">477-½ 250 (300-½) 482-½ 255 (300-½)</td> </tr> <tr> <td>LNAV MDA**</td> <td colspan="2">660-½ 433 (500-½)</td> <td colspan="2">660-¾ 433 (500-¾)</td> </tr> <tr> <td rowspan="2"> CIRCLING</td> <td colspan="2">680-1 452 (500-1)</td> <td colspan="2">700-1½ 780-2</td> </tr> <tr> <td colspan="2"></td> <td colspan="2">472 (500-1½) 552 (600-2)</td> </tr> </tbody> </table>	CATEGORY	A	B	C	D	LPV DA *	427-½ 200 (200-½)				LNAV/VNAV DA *	477-½ 250 (300-½) 482-½ 255 (300-½)				LNAV MDA**	660-½ 433 (500-½)		660-¾ 433 (500-¾)		CIRCLING	680-1 452 (500-1)		700-1½ 780-2				472 (500-1½) 552 (600-2)	
CATEGORY	A	B	C	D																											
LPV DA *	427-½ 200 (200-½)																														
LNAV/VNAV DA *	477-½ 250 (300-½) 482-½ 255 (300-½)																														
LNAV MDA**	660-½ 433 (500-½)		660-¾ 433 (500-¾)																												
CIRCLING	680-1 452 (500-1)		700-1½ 780-2																												
			472 (500-1½) 552 (600-2)																												

RNAV (GPS) RWY 32L

SW-2, 28 NOV 2024 to 26 DEC 2024

SW-2, 28 NOV 2024 to 26 DEC 2024