

RNAV (GPS) RWY 32R

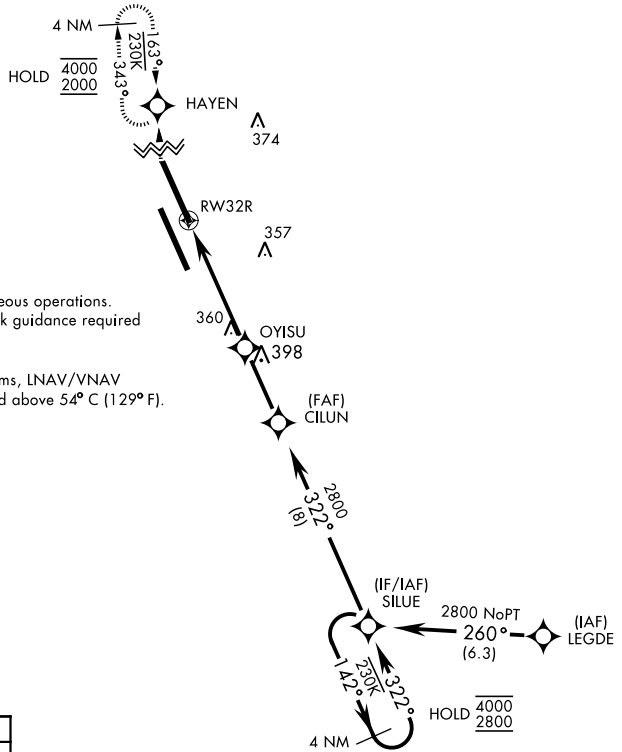
WAAS Chan 60335 W32B	APCH CRS 322°	Rwy Idg 13,502 TDZE 221 Arpt Elev 228
--	-------------------------	--

AL-5067 [USN]

LEMOORE NAS (REEVES FIELD) (KNLC)

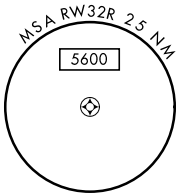
V DME/DME RNP-0.3 NA	MISSED APPROACH: Climb to 1200, then climbing right turn to 2000 direct HAYEN and hold.
-----------------------------	---

ATIS ★ 121.575 327.15	APP CON 124.1 269.025 (N) 118.15 269.025 (S)	TOWER ★ 128.3 360.2	GND CON 121.65 305.2	CLNC DEL 124.1 371.9	ASR/PAR
---------------------------------	--	-------------------------------	--------------------------------	--------------------------------	---------



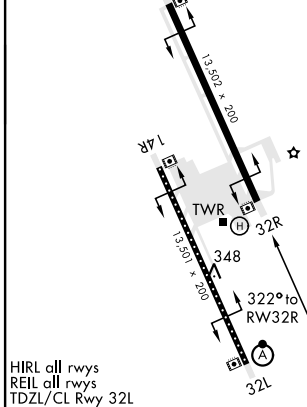
Simultaneous approaches authorized.
LNAV procedure NA during Simultaneous operations.
Use of FD or AP providing RNAV track guidance required during simultaneous operations.

For uncompensated Baro-VNAV systems, LNAV/VNAV procedure NA below -15°C (5° F) and above 54° C (129° F).

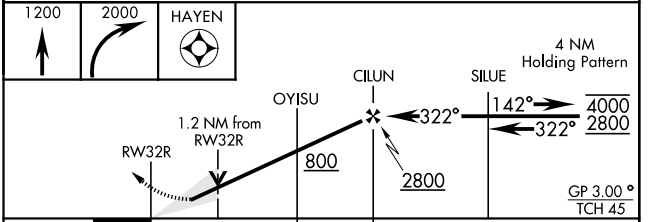


1447
EMER SAFE ALT 100 NM 16,500

ELEV 228	TDZE 221
----------	----------



HIRL all rwy's
REIL all rwy's
TDZL/CL Rwy 32L



CATEGORY	A	B	C	D
LPV DA	421- $\frac{3}{4}$	200	(200- $\frac{3}{4}$)	
LNAV/VNAV DA	511- $\frac{7}{8}$ 290 (300- $\frac{7}{8}$)	522- $\frac{7}{8}$ 301 (300- $\frac{7}{8}$)	532- $\frac{7}{8}$ 309 (400- $\frac{7}{8}$)	541- $\frac{7}{8}$ 320 (400- $\frac{7}{8}$)
LNAV MDA	660-1 439	(500-1)	660-1 $\frac{1}{4}$ 439	(500-1 $\frac{1}{4}$)
C CIRCLING	680-1 452	(500-1)	700-1 $\frac{1}{2}$ 472 (500-1 $\frac{1}{2}$)	780-2 552 (600-2)

RNAV (GPS) RWY 32R

SW-2, 28 NOV 2024 to 26 DEC 2024