

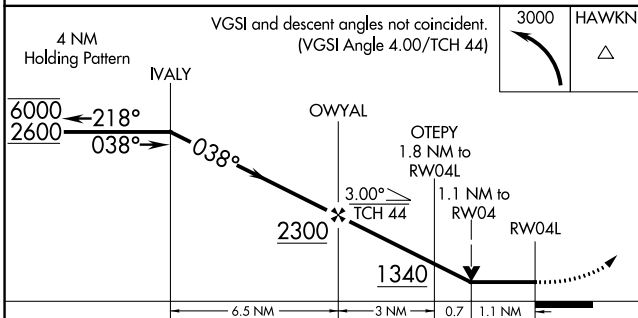
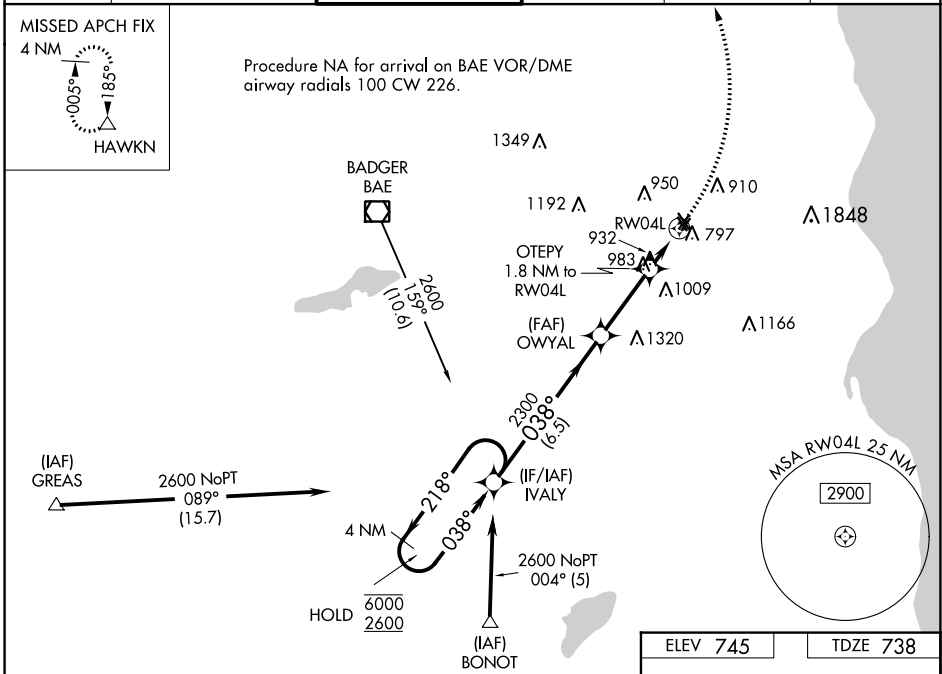
WAAS CH 90520 W04A	APP CRS 038°	Rwy Idg TDZE Apt Elev	3203 738 745
--	------------------------	-----------------------------	---

RNAV (GPS) RWY 4L

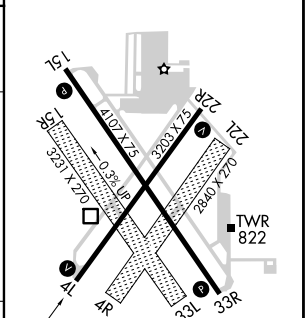
LAWRENCE J TIMMERMAN (MWC)

RNP APCH - GPS.		MISSED APPROACH: Climbing left turn to 3000 direct HAWKN and hold.	
<p>▽ Circling NA to Rwys 4R, 15R, 22L and 33L. ▲ Rwy 4L helicopter visibility reduction below 3/4 SM NA.</p>			

ATIS 128.3	MILWAUKEE APP CON 125.35 307.0	TIMMERMAN TOWER ★ 120.5 (CTAF) 0	GND CON 121.7	CLNC DEL 121.7 (When twr closed)	UNICOM 122.95
----------------------	--	---	-------------------------	---	-------------------------



ELEV 745	TDZE 738
----------	----------



CATEGORY	A	B	C	D
LP MDA	1240-1	502 (500-1)	1240-1 ³ / ₈	502 (500-1 ³ / ₈)
LNAV MDA	1300-1	562 (600-1)	1300-1 ⁵ / ₈	562 (600-1 ⁵ / ₈)
CIRCLING	1300-1 555 (600-1)	1340-1 595 (600-1)	1360-1 ³ / ₄ 615 (700-1 ³ / ₄)	1560-2 ³ / ₄ 815 (900-2 ³ / ₄)

REIL Rwys 4L, 15L, 22R, and 33R ①
 MIRL Rwys 4L-22R and 15L-33R ①

EC-3, 28 NOV 2024 to 26 DEC 2024

EC-3, 28 NOV 2024 to 26 DEC 2024