

LOC I-SKC 109.5	APP CRS 103°	Rwy Idg 5849
		TDZE 901
		Apt Elev 911


ILS or LOC RWY 10

WAUKESHA COUNTY (U/S)

RADAR required for procedure entry.

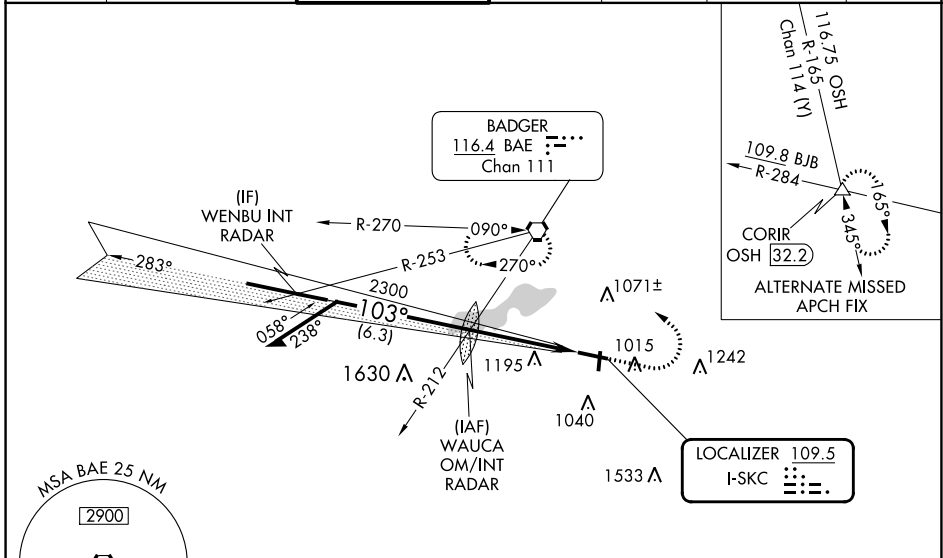
⚠ For inoperative MALSRR, increase S-LOC 10 Cat C/D visibility to 1 1/2 mile. For inop MALSRR when using Lawrence J Timmerman altimeter setting, increase S-LOC 10 Cat C/D visibility to 1 1/2 mile. When local altimeter setting not received, use Lawrence J Timmerman altimeter setting: increase DA to 1147 feet; increase all MDAs 60 feet and increase S-LOC 10 Cat C and D and Circling Cat C and D visibility 1/4 SM.

MALSRR

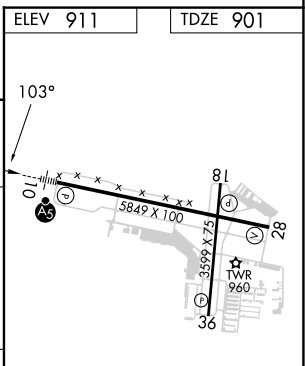
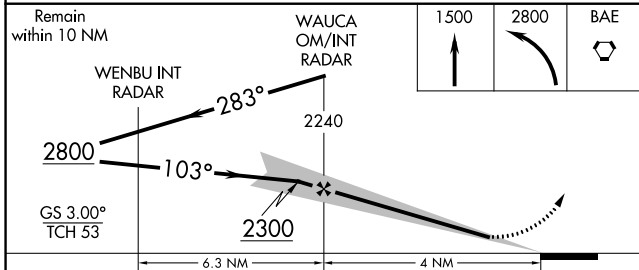


MISSED APPROACH:
Climb to 1500 then climbing left turn to 2800 direct BAE VORTAC and hold.



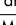
ATIS 118.875	MILWAUKEE APP CON 125.35 307.0	WAUKESHA TOWER * 123.7 (CTAF) 	GND CON 121.6	CLNC DEL 121.6	CLNC DEL 128.7 <small>(When twr closed)</small>	UNICOM 122.95
------------------------	--	---	-------------------------	--------------------------	--	-------------------------



ELEV 911	TDZE 901
----------	----------



CATEGORY	A	B	C	D
S-ILS-10	1101-1/2		200 (200-1/2)	
S-LOC-10	1400-1/2	499 (500-1/2)	1400-1	499 (500-1)
CIRCLING	1460-1 549 (600-1)	1500-1 589 (600-1)	1540-1 3/4 629 (700-1 3/4)	1640-2 1/4 729 (800-2 1/4)

HIRL Rwy 10-28 					
MIRL Rwy 18-36 					
REIL Rwy 18, 28 and 36 					
FAF to MAP 4 NM					
Knots	60	90	120	150	180
Min:Seq	4:00	2:40	2:00	1:36	1:20

EC-3, 28 NOV 2024 to 26 DEC 2024

EC-3, 28 NOV 2024 to 26 DEC 2024