

(UECKR6.UECKR) 24137

# UECKR SIX DEPARTURE (RNAV)

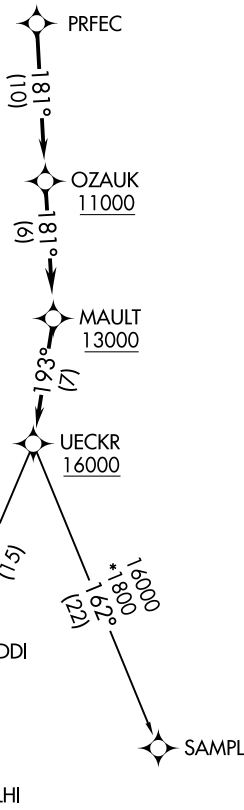
AL-5078 (FAA)

WAUKESHA COUNTY (UES)  
WAUKESHA, WISCONSIN

ATIS  
118.875  
CLNC DEL  
121.6  
MILWAUKEE CLNC DEL  
128.7 (when twr closed)  
GND CON  
121.6  
MILWAUKEE DEP CON  
125.35 307.0



**TOP ALTITUDE:  
ASSIGNED BY ATC**



### TAKEOFF MINIMUMS

Rwys 18, 28, 36: Standard.  
Rwy 10: 400-2½ or standard with minimum climb of 316' per NM to 1400.

- NOTE: RNAV 1.
- NOTE: GPS or DME/DME/IRU required.
- NOTE: RADAR required.
- NOTE: Turbojet aircraft maintain 250K until advised by ATC.
- NOTE: Notify ATC if unable to comply with crossing restrictions.

NOTE: Chart not to scale.

### DEPARTURE ROUTE DESCRIPTION

Climb on assigned heading for RADAR vectors to PRFEC, thence...

...on track 181° to cross OZAUK at or above 11000, then on track 181° to cross MAULT at or above 13000, then on track 193° to cross UECKR at or above 16000, then on (transition). Maintain ATC assigned altitude, expect filed altitude ten minutes after departure.

DELHI TRANSITION (UECKR6.DELHI)

SAMPL TRANSITION (UECKR6.SAMPL)

# UECKR SIX DEPARTURE (RNAV)

(UECKR6.UECKR) 26MAR20

WAUKESHA, WISCONSIN  
WAUKESHA COUNTY (UES)

EC-3, 28 NOV 2024 to 26 DEC 2024

EC-3, 28 NOV 2024 to 26 DEC 2024