

MERIDIAN, MISSISSIPPI

# HI-TACAN Z RWY 1L

TACAN Chan <b>56</b>	NMM <b>025°</b>	APCH CRS <b>025°</b>	Rwy ldg TDZE Arpt Elev <b>8003</b> <b>254</b> <b>316</b>
-------------------------	--------------------	-------------------------	---

AL-5079 [USN]

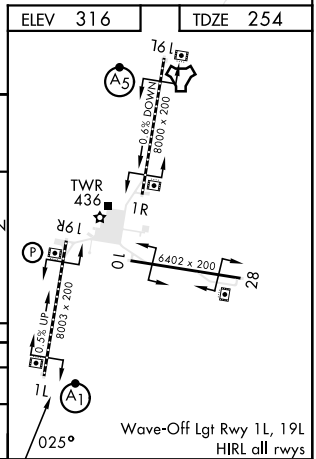
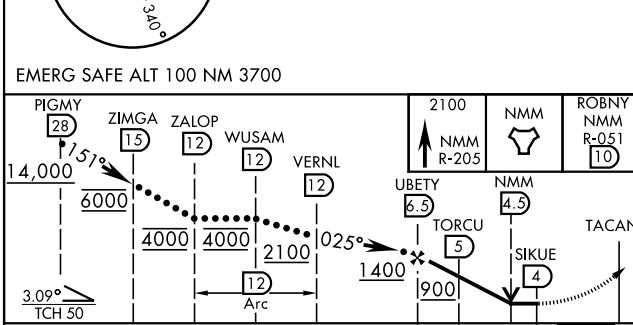
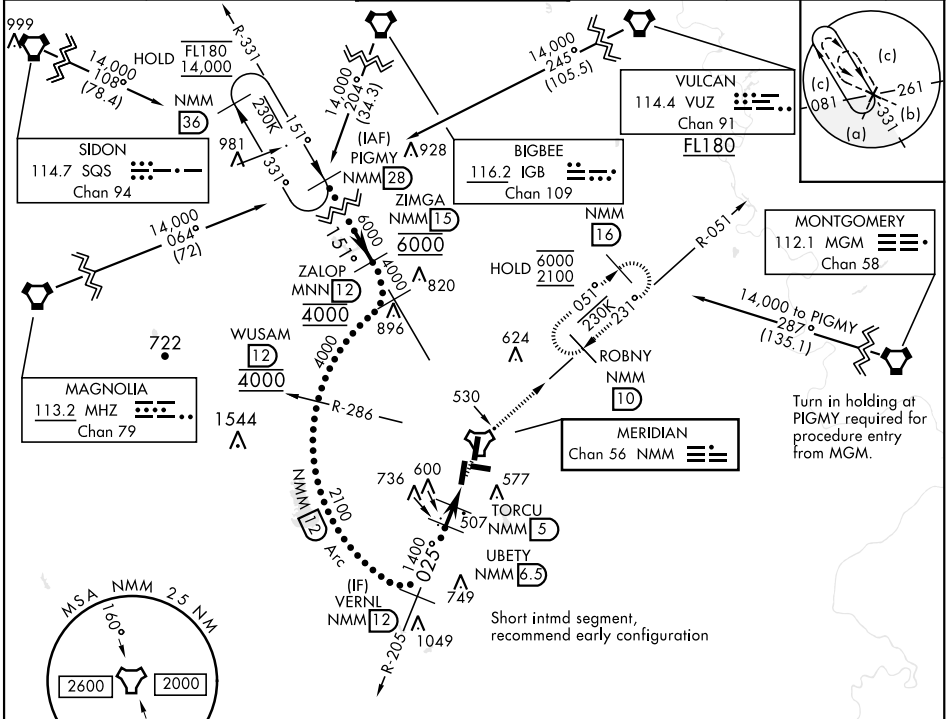
MERIDIAN NAS (MC CAIN FIELD) (KNMM)

ALSF-1
 


 MISSED APPROACH: Climb to 2100 via NMM R-205 to NMM TACAN then via R-051 to ROBNY and hold.

\* When ALS inop, increase vis to 1 3/8 miles.

ATIS ★ <b>290.525</b>	APP CON <b>120.95 276.4</b>	NAVY MC CAIN TOWER ★ <b>126.2 340.2</b>	GND CON <b>336.4</b>	CLNC DEL <b>301.0</b>	ASR/ PAR
--------------------------	--------------------------------	--	-------------------------	--------------------------	-------------



CATEGORY	C	D	E
S-1L *	760-1	506	(500-1)
CIRCLING	840-1 1/2 524 (600-1 1/2)	880-2 564 (600-2)	1080-2 3/4 764 (800-2 3/4)

MERIDIAN, MISSISSIPPI

32°33' N -88°33' W

MERIDIAN NAS (MC CAIN FIELD) (KNMM)

Amdt 5 08SEP22

# HI-TACAN Z RWY 1L

SC-4, 28 NOV 2024 to 26 DEC 2024

SC-4, 28 NOV 2024 to 26 DEC 2024