

DUBLIN, VIRGINIA

AL-5084 (FAA)

23166

LOC I-PSK <b>110.9</b>	APP CRS <b>058°</b>	Rwy Idg TDZE Apt Elev	<b>6201</b> <b>2105</b> <b>2105</b>
---------------------------	------------------------	-----------------------------	---

# ILS or LOC Y RWY 6

NEW RIVER VALLEY (PSK)

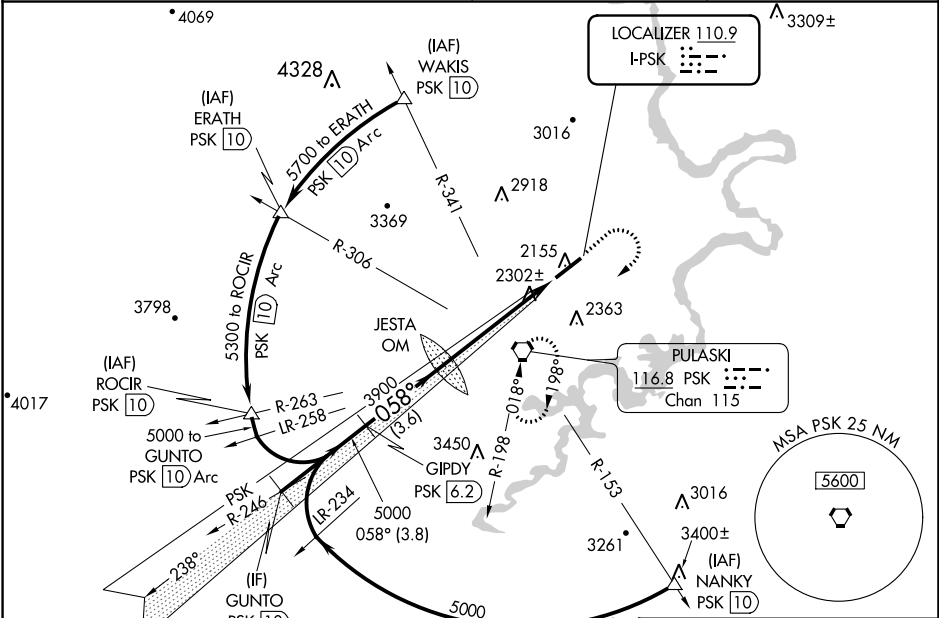
DME required.



**MISSED APPROACH:** Climb to 3000 then climbing right turn to 5000 direct PSK VORTAC and hold, continue climb-in-hold to 5000.

**NA** Circling NA for Cat D northwest of Rwy 6-24. Inop table does not apply to S-ILS 6 all Cats and S-LOC 6 Cats A and B. For inop ALS, increase S-LOC 6 Cat C/D visibility to 1 3/8 SM.

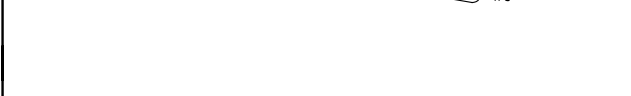
AWOS-3 <b>127.375</b>	ROANOKE APP CON <b>126.0 339.8</b>	ROANOKE CLNC DEL <b>121.7</b>	UNICOM <b>122.7 (CTAF)</b>
--------------------------	---------------------------------------	----------------------------------	-------------------------------



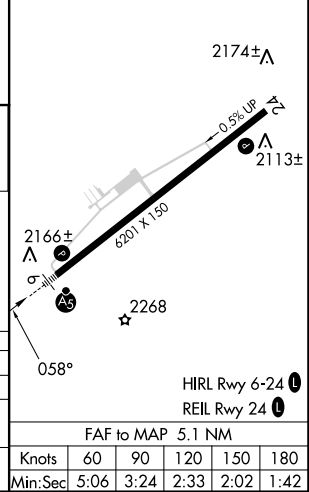
NE-3, 28 NOV 2024 to 26 DEC 2024

NE-3, 28 NOV 2024 to 26 DEC 2024

ELEV 2105	TDZE 2105
-----------	-----------



	3000	5000	PSK
	↑	↷	⬡
GUNTO PSK 10	GIPDY PSK 6.2	JESTA OM 3823	
5000	5000	3900	
GS 3.00° TCH 58			
	3.8 NM	3.6 NM	5.1 NM



CATEGORY	A	B	C	D		
S-ILS 6		2305-1	200 (200-1)			
S-LOC 6		2560-1	455 (500-1)			
<b>C</b> CIRCLING	2620-1 515 (600-1)	2680-1 575 (600-1)	2780-2 675 (700-2)	2780-2 1/4 675 (700-2 1/4)		
	Knots	60	90	120	150	180
	Min:Sec	5:06	3:24	2:33	2:02	1:42

DUBLIN, VIRGINIA

37°08'N-80°41'W

Orig-B 25FEB21

# NEW RIVER VALLEY (PSK)

## ILS or LOC Y RWY 6