

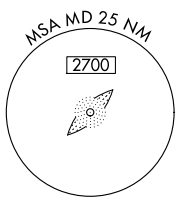
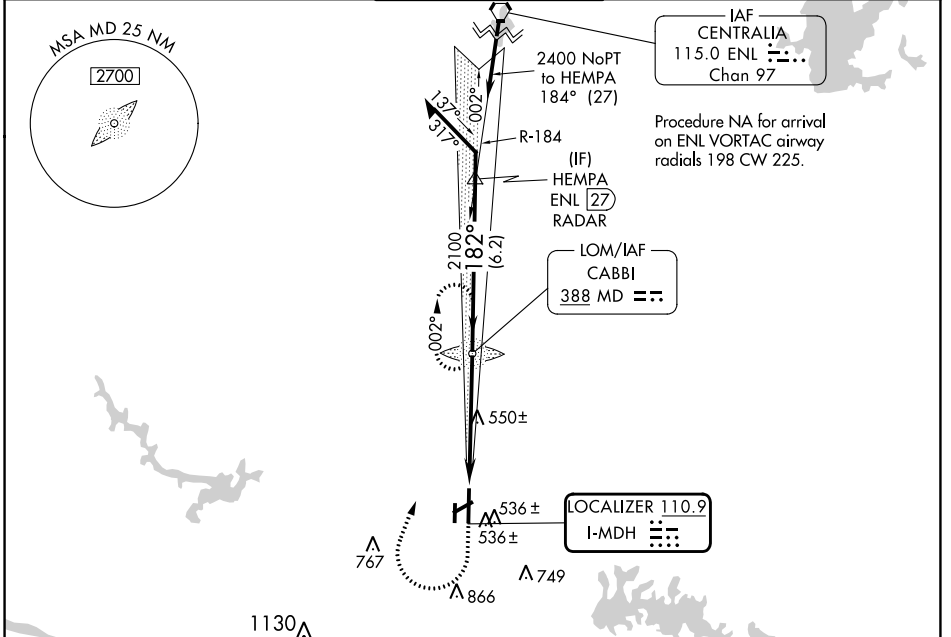
LOC I-MDH <b>110.9</b>	APP CRS <b>182°</b>	Rwy Idg TDZE Apt Elev	<b>6506</b> <b>407</b> <b>411</b>
---------------------------	------------------------	-----------------------------	---

# ILS or LOC RWY 18L

SOUTHERN ILLINOIS (MDH)

ADF required. 	MALS R 	MISSED APPROACH: Climb to 2100 then climbing right turn to 2400 direct CABBI LOM and hold.
Circling Rwy 6, 36L NA at night.		

ATIS <b>119.725</b>	KANSAS CITY CENTER <b>127.475 346.275</b>	SOUTHERN TOWER ★ <b>125.35 (CTAF) 0 322.4</b>	GND CON <b>121.8</b>	UNICOM <b>122.95</b>
------------------------	--	--	-------------------------	-------------------------

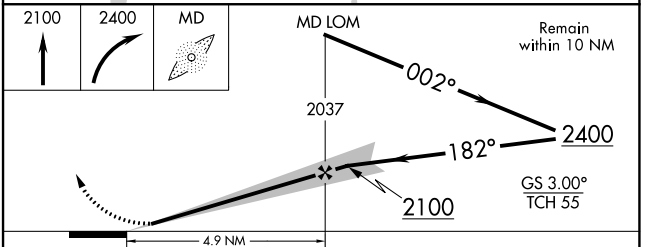
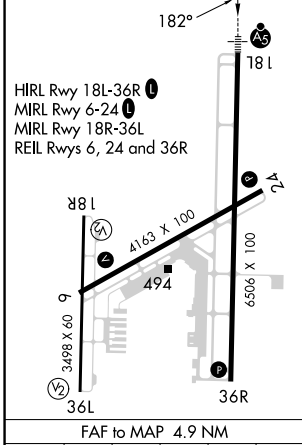


IAF CENTRALIA  
115.0 ENL Chan 97

Procedure NA for arrival on ENL VORTAC airway radials 198 CW 225.

LOCALIZER 110.9  
I-MDH

ELEV 411	<b>D</b> TDZE 407
----------	-------------------



CATEGORY	A	B	C	D
S-ILS 18L	607-½ 200 (200-½)			
S-LOC 18L	800-½ 393 (400-½)	800-⅝ 393 (400-⅝)		
CIRCLING	900-1 489 (500-1)	920-1 509 (600-1)	1180-2¼ 769 (800-2¼)	1180-2½ 769 (800-2½)

EC-3, 28 NOV 2024 to 26 DEC 2024

EC-3, 28 NOV 2024 to 26 DEC 2024