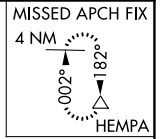
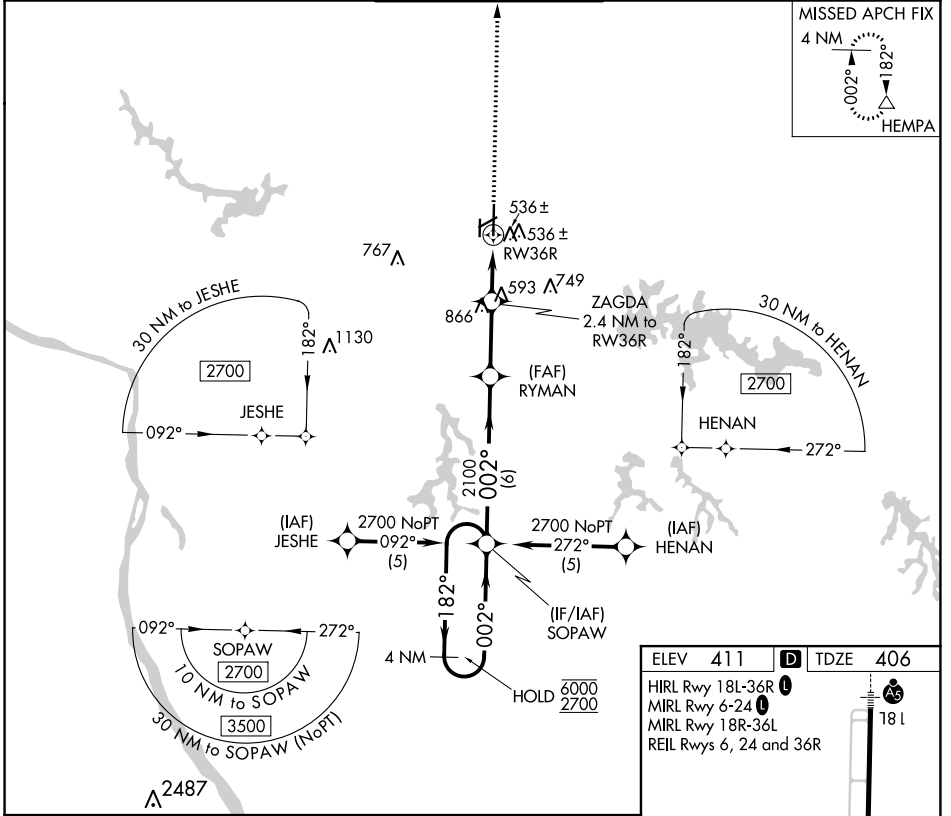


APP CRS	Rwy Idg	6506
002°	TDZE	406
	Apt Elev	411

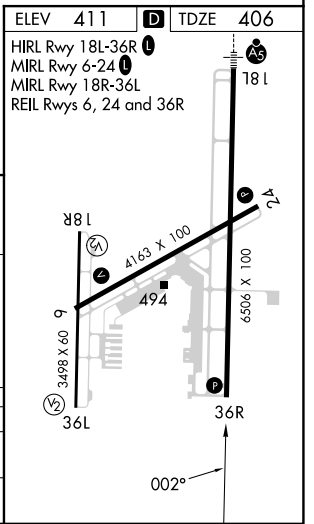
RNAV (GPS) RWY 36R

SOUTHERN ILLINOIS (MDH)

RNP APCH.		MISSED APPROACH: Climb to 2700 direct HEMPA and hold.		
<p>▼ Circling Rwy 6, 36L NA at night.</p> <p>▲ Rwy 36R helicopter visibility reduction below 3/4 SM NA.</p>				
ATIS	KANSAS CITY CENTER	SOUTHERN TOWER ★	GND CON	UNICOM
119.725	127.475 346.275	125.35 (CTAF) 322.4	121.8	122.95



4 NM Holding Pattern	VGSI and descent angles not coincident (VGSI Angle 3.00/TCH 45).		2700	HEMPA
SOPAW	RYMAN	ZAGDA		
6000 ← 182°	2100	1200		
2700 → 002°				
	6 NM	2.7 NM	1.1 NM	1.3 NM
CATEGORY	A	B	C	D
LNVA MDA	860-1	454 (500-1)	860-1 3/8	454 (500-1 3/8)
CIRCLING	900-1 489 (500-1)	920-1 509 (600-1)	1180-2 1/4 769 (800-2 1/4)	1180-2 1/2 769 (800-2 1/2)



EC-3, 28 NOV 2024 to 26 DEC 2024

EC-3, 28 NOV 2024 to 26 DEC 2024