

VOR TBN 110.0	APP CRS 329°	Rwy Idg TDZE Apt Elev	5510 1153 1160
-------------------------	------------------------	-----------------------------	---

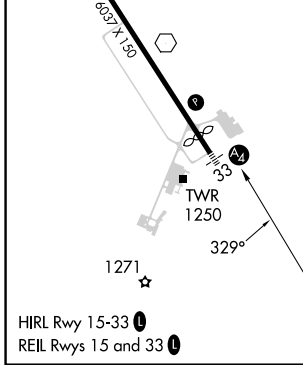
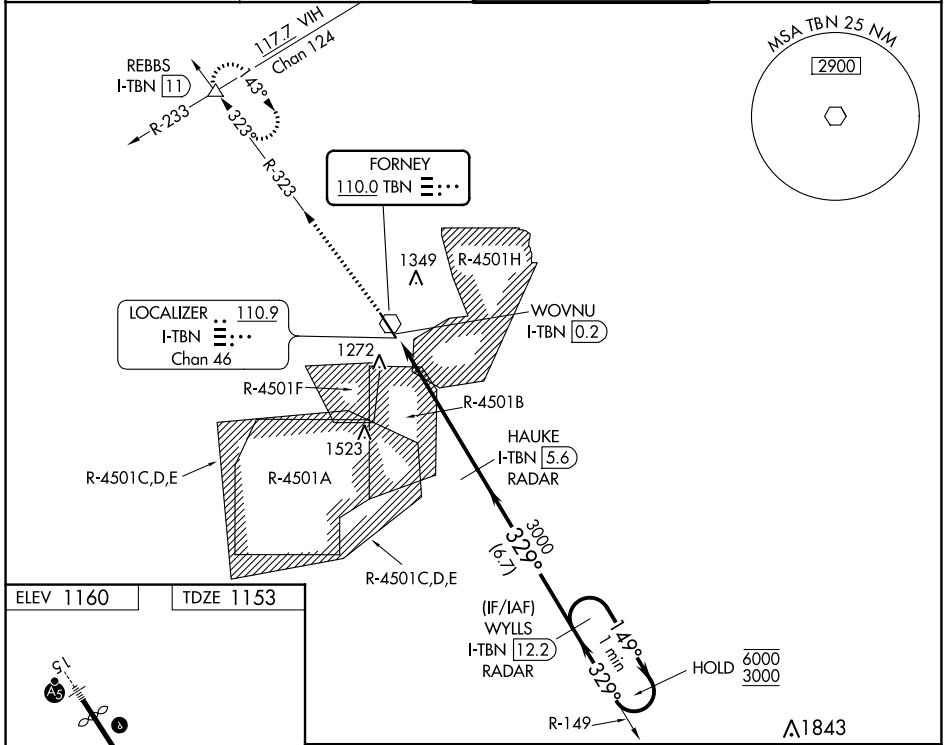
VOR RWY 33

WAYNESVILLE-ST ROBERT RGNL FORNEY FLD (T'BN)

DME or RADAR required. RADAR required for procedure entry.

<p>⚠ When local altimeter not received, use Rolla MSL altimeter setting and increase all MDAs 80 feet. Increase S-33 Cats C/D visibility to 1¼ SM. Procedure NA when R-4501B or R-4501H in use. Circling NA west of Rwy 15-33. Rwy 33 helicopter visibility reduction below ¾ SM NA. Inop table does not apply to Cats A and B. For inop ALS, increase Cats C and D visibility to 1¾ SM. Inop table does not apply to Cats A and B when using Rolla MSL altimeter setting.</p>	<p>MALS</p>	<p>MISSED APPROACH: Climb to 3000 on TBN VOR R-323 to REBBS INT/I-TBN LOC/DME 11 DME and hold.</p>

D-ATIS 118.7 229.4	KANSAS CITY CENTER 128.35 284.675	FORNEY TOWER ★ 125.4 (CTAF) 0 268.7	GND CON 123.75 256.8
------------------------------	---	---	--------------------------------



ELEV 1160	TDZE 1153				
3000	REBBS △	HAUKE I-TBN 5.6 RADAR	WYLLS I-TBN 12.2 RADAR	One Minute Holding Pattern	
TBN R-323	I-TBN DME ANTENNA	WOVNU I-TBN 0.2	I-TBN 1.2	329°	149° → 6000
				← 329°	← 3000
				3.00° TCH 36	
				1.3 NM	4.4 NM
				6.7 NM	
CATEGORY	A	B	C	D	
S-33	1600-1 447 (500-1)				
CIRCLING	1600-1 440 (500-1)	1660-1 500 (500-1)	1660-1½ 500 (500-1½)	1720-2 560 (600-2)	

NC-3, 28 NOV 2024 to 26 DEC 2024

NC-3, 28 NOV 2024 to 26 DEC 2024