

NC-1, 28 NOV 2024 to 26 DEC 2024

**DEPARTURE ROUTE DESCRIPTION**

**TAKEOFF ALL RUNWAYS:** Fly assigned heading and altitude for RADAR vectors to MSP VOR/DME then on MSP R-138 to cross JEDET INT/MSP 34 DME, at or above 4000; then on ODI R-301 to ZMBRO INT/ODI 50 DME, thence . . . . .

. . . . .on assigned transition or route. Expect clearance to filed altitude/flight level 10 (ten) minutes after departure.

**NODINE TRANSITION [ZMBRO7.ODI]:** From over ZMBRO on ODI R-301 to ODI VORTAC.

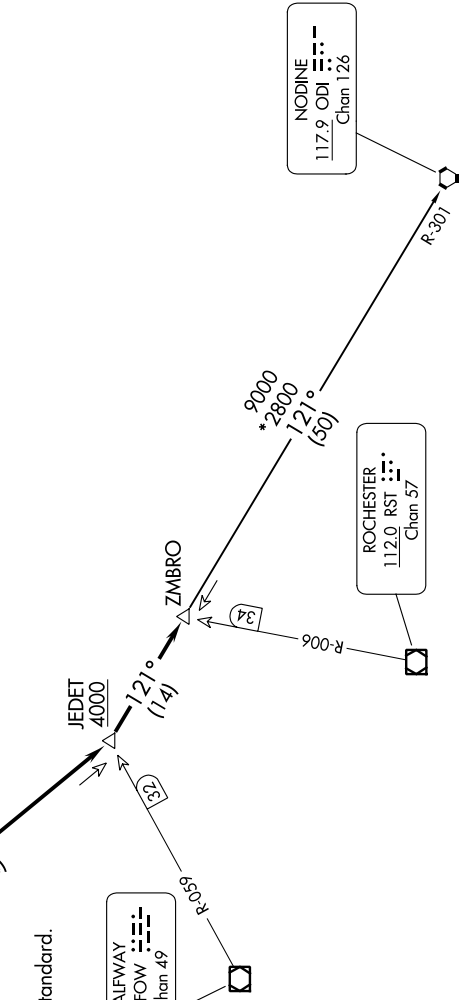
**TOP ALTITUDE:  
(JETS) 7000/  
(PROPS) 5000**

MINNEAPOLIS DEP CON  
134.7 284.7  
ATIS  
124.9  
MINNEAPOLIS CLNC DEL  
121.7 (when lower closed)  
FLYING CLOUD TOWER★  
119.15

MINNEAPOLIS  
115.3 MSP  
Chan 100

**TAKEOFF MINIMUMS**  
Rwys 10L/R, 18, 28L/R, 36: Standard.

HALFWAY  
111.2 FOW  
Chan 49



NODINE  
117.9 ODI  
Chan 126

ROCHESTER  
112.0 RST  
Chan 57

**NOTE: RADAR required.**  
NOTE: Chart not to scale.

NC-1, 28 NOV 2024 to 26 DEC 2024