

APP CRS	Rwy Idg	4001
141°	TDZE	9
	Apt Elev	10

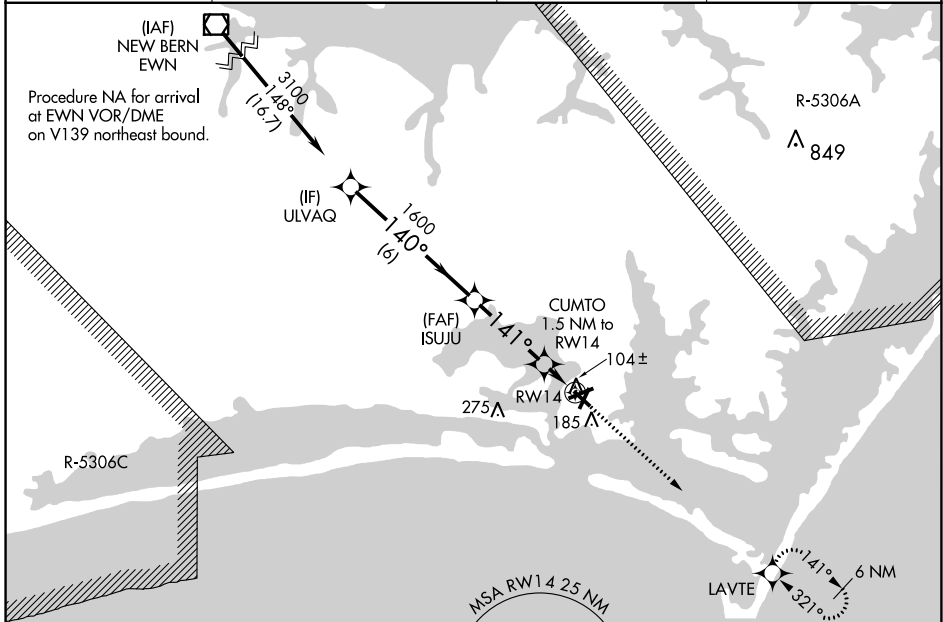
RNAV (GPS) RWY 14

MICHAEL J SMITH FLD (MR.H)

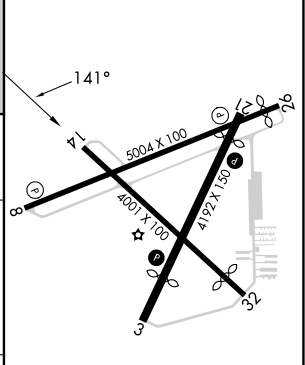
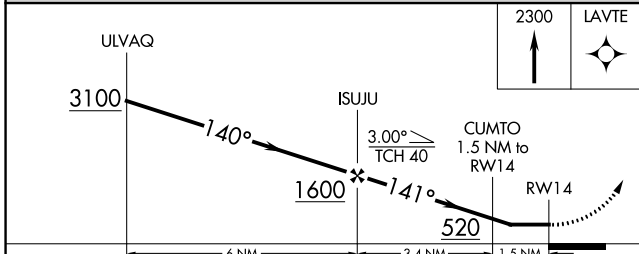
⚠ DME/DME RNP-0.3 NA. ATC clearance required to penetrate R-5306A and R-5306C. When local altimeter setting not received, use Cherry Point MCAS (Cunningham Fld) altimeter setting and increase all MDA 40 feet; increase LNAV Cats C and D visibility 1/8 mile. Straight-in Rwy 14 NA at night, Circling Rwy 8, 14, 32 NA at night. Rwy 8, 14, 32 helicopter visibility reduction below 1 SM NA.

MISSED APPROACH:
Climb to 2300 direct LAVTE and hold.

ASOS 135.375	CHERRY POINT APP CON 132.575 299.6	CLNC DEL 125.65	UNICOM 122.8 (CTAF) 0
------------------------	--	---------------------------	---------------------------------



ELEV 10	TDZE 9
---------	--------



CATEGORY	A	B	C	D
LNAV MDA	360-1		351 (400-1)	
CIRCLING	540-1	530 (600-1)	580-1½ 570 (600-1½)	580-2 570 (600-2)

REIL Rwys 8 and 26 **0**
MIRL Rwys 3-21 and 8-26 **0**

SE-2, 28 NOV 2024 to 26 DEC 2024

SE-2, 28 NOV 2024 to 26 DEC 2024