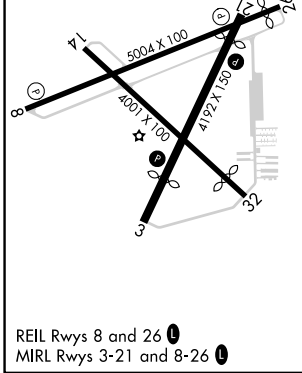
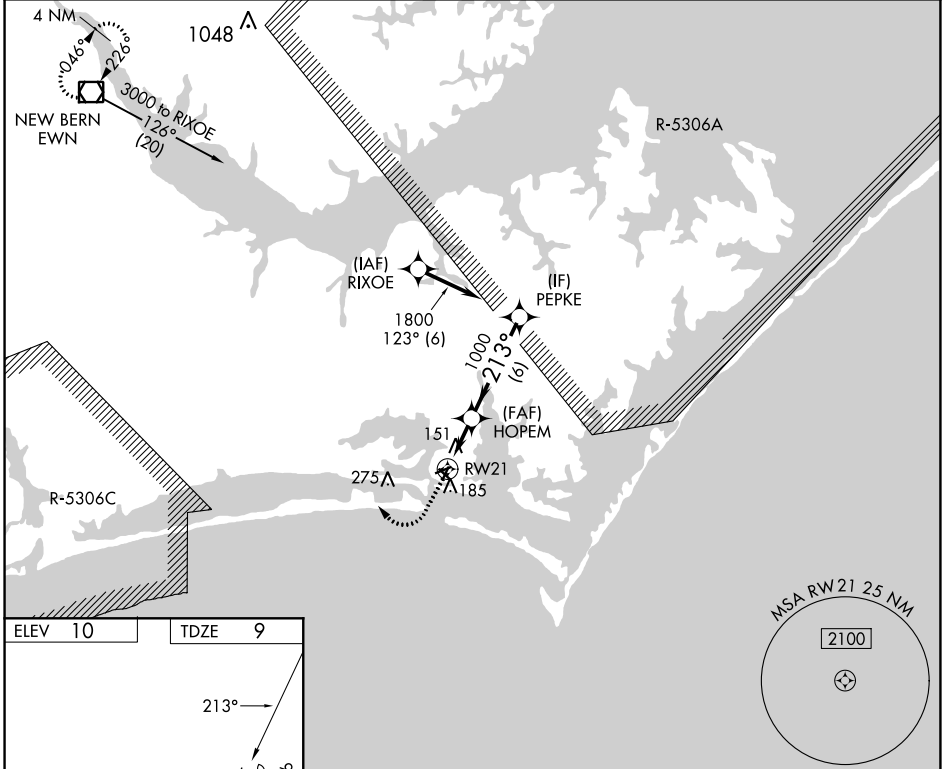


APP CRS <b>213°</b>	Rwy Idg TDZE Apt Elev	<b>3676</b> <b>9</b> <b>10</b>
------------------------	-----------------------------	--------------------------------------

# RNAV (GPS) RWY 21

MICHAEL J SMITH FLD (MR.H)

RNP APCH - GPS.			MISSED APPROACH: Climb to 500 then climbing right turn to 3000 direct EWN VOR/DME and hold.
ASOS <b>135,375</b>	CHERRY POINT APP CON <b>132,575 299.6</b>	CLNC DEL <b>125,65</b>	UNICOM <b>122.8 (CTAF) 0</b>



500	3000	EWN	VGSI and descent angles not coincident (VGSI Angle 4.00/TCH 54).
RWY 21		HOPEM	PEPKE
0.8 NM to RWY 21		1000	1800
TCH 40		213°	
0.8		2.2 NM	
0.8		6 NM	
CATEGORY	A	B	C
LNAV MDA	420-1	411 (500-1)	NA
CIRCLING	540-1	530 (600-1)	NA

SE-2, 28 NOV 2024 to 26 DEC 2024

SE-2, 28 NOV 2024 to 26 DEC 2024