

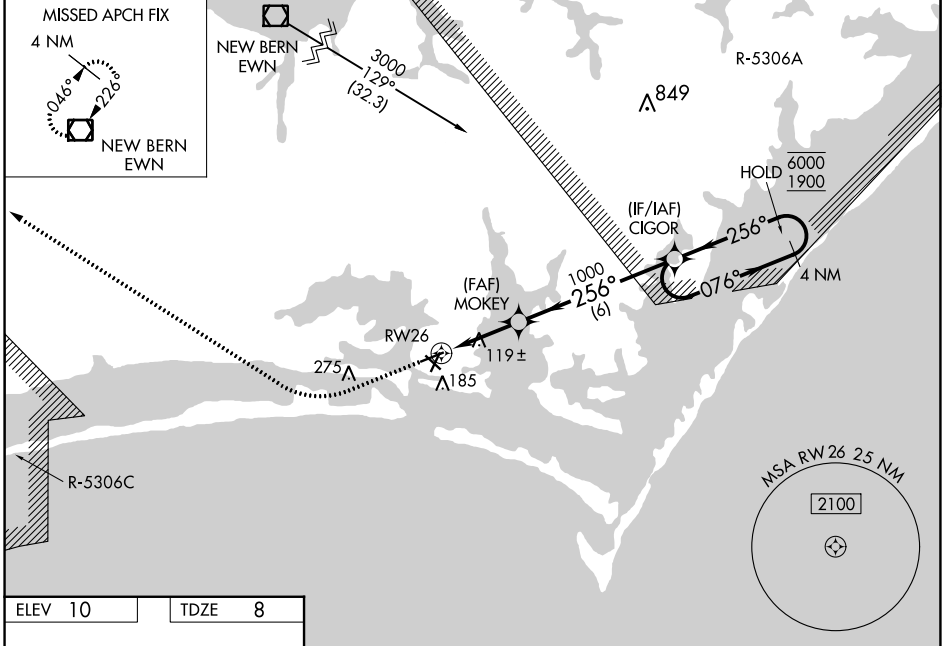
WAAS CH <b>40338</b> <b>W26A</b>	APP CRS <b>256°</b>	Rwy Idg TDZE Apt Elev	<b>4715</b> <b>8</b> <b>10</b>
--	------------------------	-----------------------------	--------------------------------------

# RNAV (GPS) RWY 26

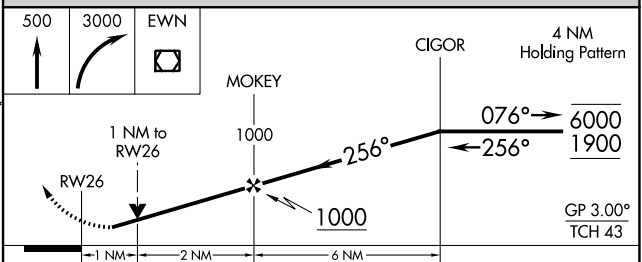
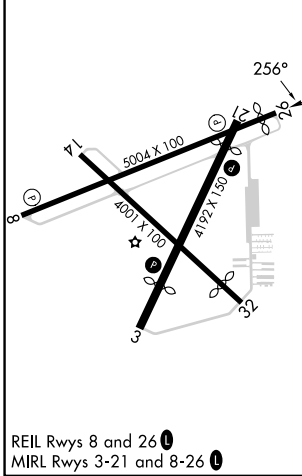
MICHAEL J SMITH FLD (MRH)

RNP APCH - GPS.		MISSED APPROACH: Climb to 500 then climbing right turn to 3000 direct EWN VOR/DME and hold.	
<b>▽</b>	Circling Rwy 8, 14, 32 NA at night. Rwy 26 helicopter visibility reduction below $\frac{3}{4}$ SM NA. For uncompensated Baro-VNAV systems, LNAV/VNAV NA below -5°C or above 54°C. ATC clearance required to penetrate R-5306A and R-5306C.		

ASOS <b>135.375</b>	CHERRY POINT APP CON <b>132.575 299.6</b>	CLNC DEL <b>125.65</b>	UNICOM <b>122.8 (CTAF)</b>
------------------------	--	---------------------------	-------------------------------



ELEV 10	TDZE 8
---------	--------



CATEGORY	A	B	C	D
LPV DA		266- $\frac{3}{4}$	258 (300- $\frac{3}{4}$ )	
LNAV/VNAV DA		394-1 $\frac{1}{8}$	386 (400-1 $\frac{1}{8}$ )	
LNAV MDA		380-1	372 (400-1)	
<b>C</b> CIRCLING	540-1	530 (600-1)	580-1 $\frac{1}{2}$ 570 (600-1 $\frac{1}{2}$ )	580-2 570 (600-2)

SE-2, 28 NOV 2024 to 26 DEC 2024

SE-2, 28 NOV 2024 to 26 DEC 2024