

FORT JOHNSON, LOUISIANA

# RNAV (GPS) RWY 34

APCH CRS	Rwy ldg	4107
338°	TDZE	321
	Arprt Elev	330

[USA]

MAKS AAF (KPOE)

RNP APCH - GFS

RADAR required for arrivals at DXB NDB and CATVO.

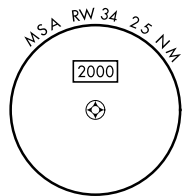
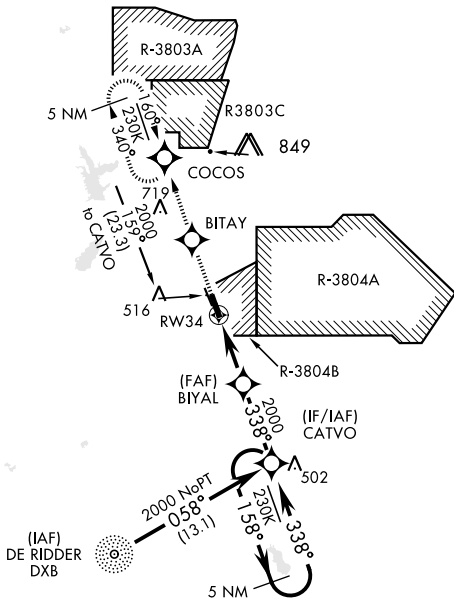
▼ \* When ALS inop, increase CAT AB vis to 1 mile, CAT CD vis to 1 3/8 mile. When control tower is closed, increase visibility to 1 mile. Rwy 34 helicopter visibility reduction below 3/4 mile not authorized.



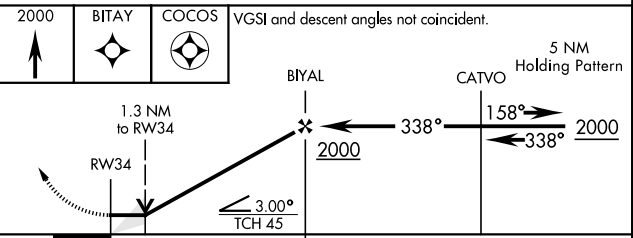
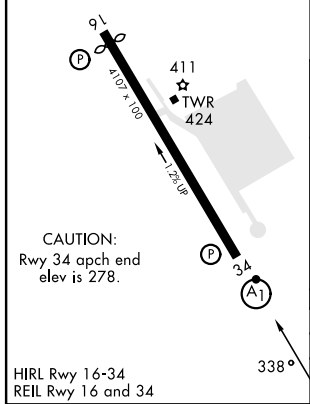
MISSED APPROACH: Climb to 2000 direct BITAY and on track 340° to COCOS and hold.

ATIS <b>134.85 282.2</b>	APP CON <b>123.7 261.3</b>	TOWER★ <b>119.0(CTAF) 257.75</b>	GND CON <b>121.8 239.25</b>	ASR/PAR
-----------------------------	-------------------------------	-------------------------------------	--------------------------------	---------

When R-3803C active, missed approach holding (COCOS) not authorized. Expect radar vectors.



ELEV	330	TDZE	321
Rwy 16 ldg 3913'			



CATEGORY	A	B	C	D
LNVA MDA*	760-3/4	439 (500-3/4)	760-1	439 (500-1)
CIRCLING	880-1	550 (600-1)	880-1 1/2	940-2
			550 (600-1 1/2)	610 (700-2)

FORT JOHNSON, LOUISIANA  
Amdt 2 07SEP23

31° 03' N-93° 11' W

MAKS AAF (KPOE)

# RNAV (GPS) RWY 34

SC-4, 28 NOV 2024 to 26 DEC 2024

SC-4, 28 NOV 2024 to 26 DEC 2024