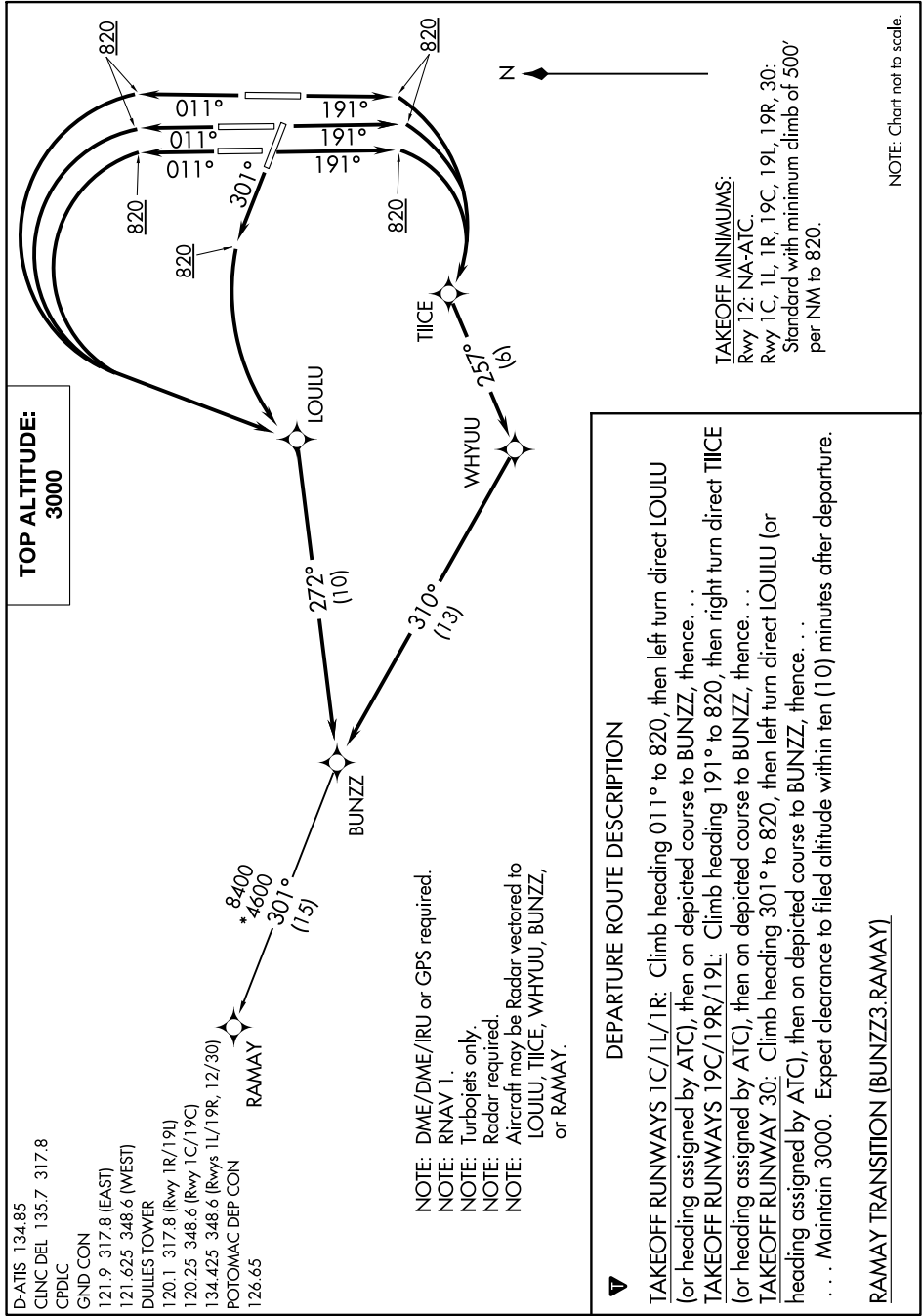


# BUNZZ THREE DEPARTURE (RNAV)

NE-3, 28 NOV 2024 to 26 DEC 2024



**TOP ALTITUDE:  
3000**

**TAKEOFF MINIMUMS:**  
Rwy 12: NA-ATC.  
Rwy 1C, 1L, 1R, 19C, 19L, 19R, 30:  
Standard with minimum climb of 500'  
per NM to 820.

NOTE: Chart not to scale.

## DEPARTURE ROUTE DESCRIPTION

**TAKEOFF RUNWAYS 1C/1L/1R:** Climb heading 011° to 820, then left turn direct LOULU (or heading assigned by ATC), then on depicted course to BUNZZ, thence. . .

**TAKEOFF RUNWAYS 19C/19R/19L:** Climb heading 191° to 820, then right turn direct TIICE (or heading assigned by ATC), then on depicted course to BUNZZ, thence. . .

**TAKEOFF RUNWAY 30:** Climb heading 301° to 820, then left turn direct LOULU (or heading assigned by ATC), then on depicted course to BUNZZ, thence. . .

. . . Maintain 3000. Expect clearance to filed altitude within ten (10) minutes after departure.

RAMAY TRANSITION (BUNZZ3:RAMAY)

NE-3, 28 NOV 2024 to 26 DEC 2024