

LOC/DME I-HAD <b>110.1</b> Chan 38	APP CRS <b>011°</b>	Rwy ldg <b>11500</b> TDZE <b>312</b> Apt Elev <b>312</b>
--	------------------------	--

# ILS RWY 1R (CAT II & III)

WASHINGTON DULLES INTL (IAD)

RNP APCH-GPS. From GNATZ, or HUFFF.

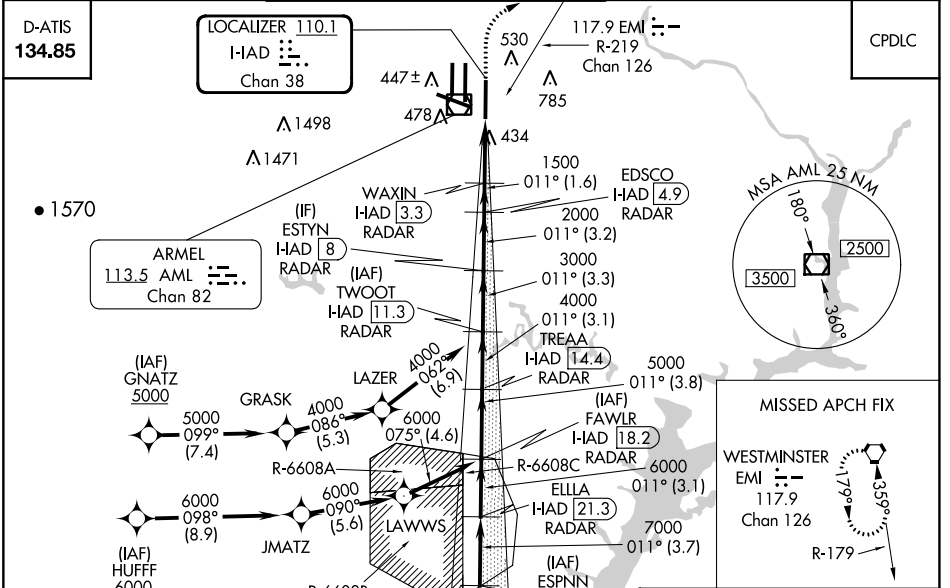
DME or RADAR required.  
RADAR required for procedure entry at ESPNN.

ALSF-2

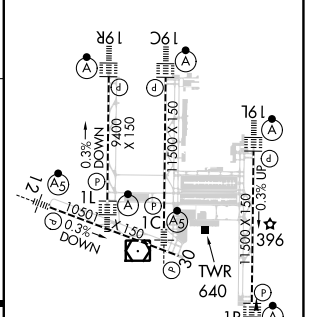
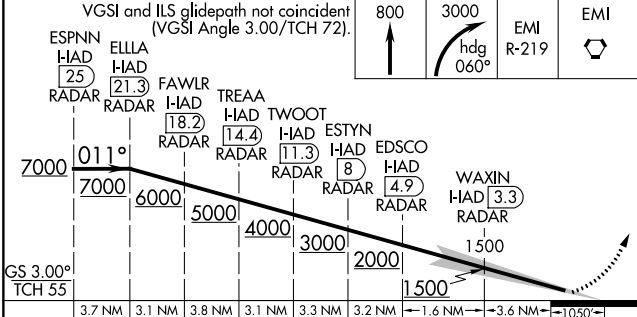
MISSED APPROACH: Climb to 800 then climbing right turn to 3000 on heading 060° and EMI VORTAC R-219 to EMI VORTAC and hold.

Simultaneous approach authorized.

POTOMAC APP CON <b>120.45 306.925</b> (241°-330°) <b>128.525 306.925</b> (091°-240°) <b>126.1 338.25</b> (331°-090°)	DULLES TOWER <b>120.1 317.8</b> (Rwy 1R/19L) <b>120.25 348.6</b> (Rwy 1C/19C) <b>134.425 348.6</b> (Rwys 1L/19R and 12/30)	GND CON <b>121.9 317.8</b> (EAST) <b>121.625 348.6</b> (WEST)	CLNC DEL <b>135.7 317.8</b>
---	---	---	--------------------------------



ESPNN I-HAD [25] RADAR	ELLA I-HAD [21.3] RADAR	FAWLR I-HAD [18.2] RADAR	TREA A I-HAD [14.4] RADAR	TWOOT I-HAD [11.3] RADAR	EDSCO I-HAD [4.9] RADAR	WAXIN I-HAD [3.3] RADAR
------------------------	-------------------------	--------------------------	---------------------------	--------------------------	-------------------------	-------------------------



CATEGORY	A	B	C	D
S-ILS 1R	CAT II RA 94/12 100 DA 412			
S-ILS 1R	CAT III RVR 06			

## CATEGORY II & III ILS - SPECIAL AIRCREW & AIRCRAFT CERTIFICATION REQUIRED

TDZ/CL Rwys 1C, 1L, 1R, 12, 19C and 19R  
REIL Rwy 30  
HIRL all Rwys

NE-3, 28 NOV 2024 to 26 DEC 2024

NE-3, 28 NOV 2024 to 26 DEC 2024