

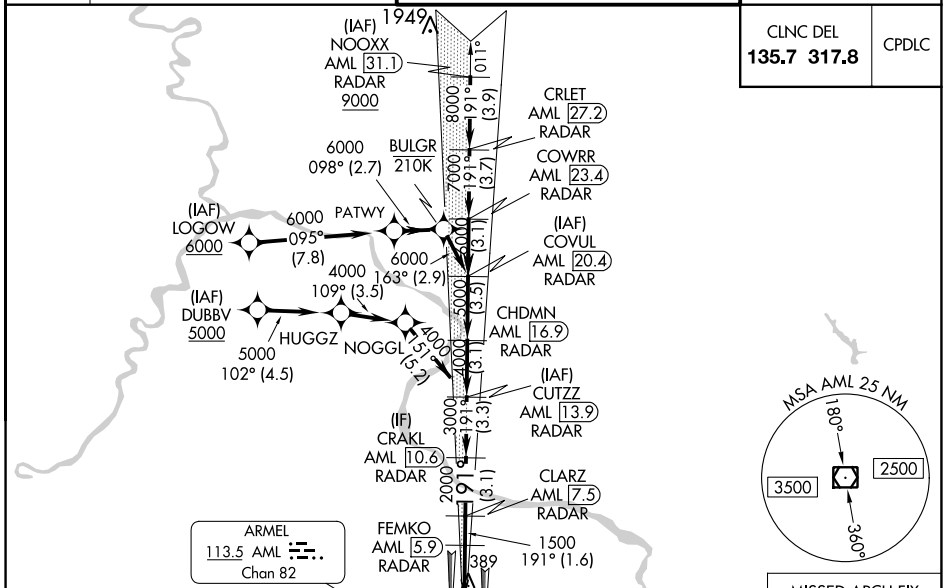
LOC I-DLX <b>111.3</b>	APP CRS <b>191°</b>	Rwy Idg <b>11089</b> TDZE <b>272</b> Apt Elev <b>312</b>
---------------------------	------------------------	--

# ILS or LOC RWY 19C

WASHINGTON DULLES INTL (IAD)

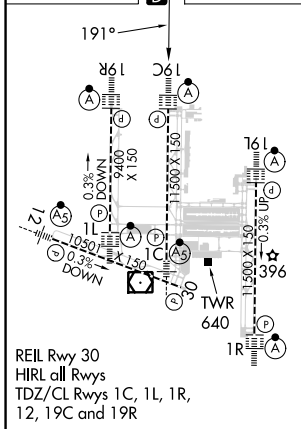
RNP APCH - GPS. RADAR required for procedure entry at NOOXX. DME or RADAR required.	ALSF-2	MISSED APPROACH: Climb to 3000 direct MOOOV and hold.
<p>Simultaneous approach authorized. DME from AML VOR/DME. DME use requires simultaneous reception of I-DLX and AML DME. For inop ALS, increase S-LOC 19C Cat C and D visibility to RVR 5500.</p>		

D-ATIS <b>134.85</b>	POTOMAC APP CON <b>120.45 306.925</b> (241°-330°) <b>128.525 306.925</b> (091°-240°) <b>126.1 338.25</b> (331°-090°)	DULLES TOWER <b>120.1 317.8</b> (Rwy 1R/19L) <b>120.25 348.6</b> (Rwy 1C/19C) <b>134.425 348.6</b> (Rwys 1L/19R and 12/30)	GND CON <b>121.9 317.8</b> (EAST) <b>121.625 348.6</b> (WEST)
-------------------------	---	---	---



CLNC DEL <b>135.7 317.8</b>	CPDLC
--------------------------------	-------

ELEV 312	TDZE 272
----------	----------



3000 MOOOV	VGSi and ILS glidepath not coincident (VGSi Angle 3.00/TCH 72).			
	FEMKO AML 5.9	CLARZ AML 7.5	CRAKL AML 10.6	CUTZZ AML 13.9
	CHDMN AML 16.9	COVUL AML 20.4	COWRR AML 23.4	CRLET AML 27.2
	NOOXX AML 31.1			
	1500	2000	3000	4000
	5000	6000	7000	8000
	9000			
	GS 3.00°	TCH 54		
	0.2	0.7	2.8	3.1
	1.6	3.1	3.3	3.5
	3.1	3.5	3.1	3.7
	3.1	3.5	3.1	3.9

FAF to MAP 3.7 NM					
Knots	60	90	120	150	180
Min:Sec	3:42	2:28	1:51	1:29	1:14

CATEGORY	A	B	C	D
S-ILS 19C	472/18 200 (200-½)			
S-LOC 19C	640/24	368 (400-½)	640/35	368 (400-¾)
CIRCLING	940-1	628 (700-1)	940-1¾	1180-2¾
			628 (700-1¾)	868 (900-2¾)

NE-3, 28 NOV 2024 to 26 DEC 2024

NE-3, 28 NOV 2024 to 26 DEC 2024