

LOC/DME I-OIU <b>110.75</b> Chan <b>44</b> (Y)	APP CRS <b>011°</b>	Rwy Idg TDZE Apt Elev	<b>9400</b> <b>296</b> <b>312</b>
--	------------------------	-----------------------------	---

# ILS or LOC RWY 1L

WASHINGTON DULLES INTL (IAD)

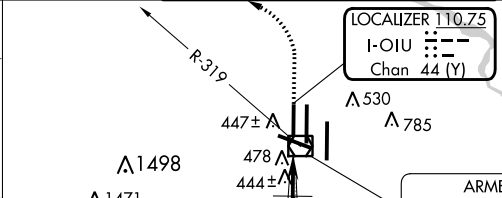
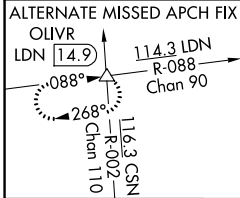
RNP APCH - GPS. From GNATZ.  
DME or RADAR required. DME required for LOC only.  
RADAR required for procedure entry at WABER.

Simultaneous approach authorized.  
For inop ALS, increase LOC Cats C/D visibility to RVR 5500.

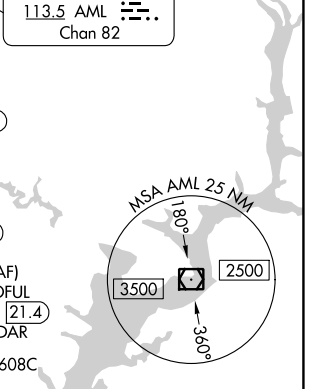
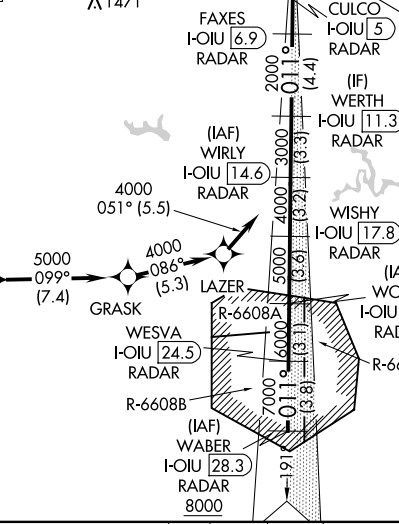
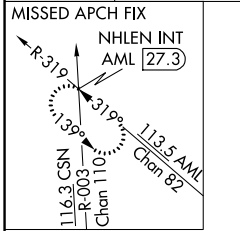
ALSF-2

MISSED APPROACH: Climb to 800 then climbing left turn to 3000 on heading 276° and on AML VOR/DME R-319 to NHLEN INT/AML 27.3 DME and hold.

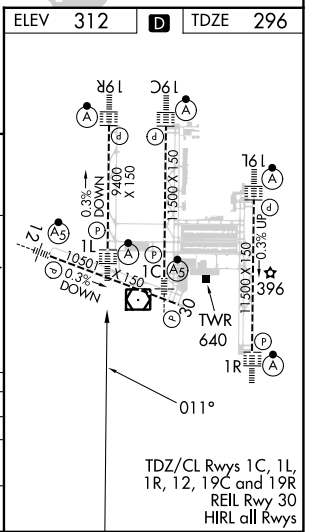
D-ATIS <b>134.85</b>	POTOMAC APP CON <b>120.45 306.925</b> (241°-330°) <b>128.525 306.925</b> (091°-240°) <b>126.1 338.25</b> (331°-090°)	DULLES TOWER <b>120.1 317.8</b> (Rwy 1R/19L) <b>120.25 348.6</b> (Rwy 1C/19C) <b>134.425 348.6</b> (Rwys 1L/19R and 12/30)	GND CON <b>121.9 317.8</b> (EAST) <b>121.625 348.6</b> (WEST)
-------------------------	---	---	---



CLNC DEL <b>135.7 317.8</b>	CPDLC
--------------------------------	-------



WABER I-OIU [28.3] RADAR	WOFUL I-OIU [21.4] RADAR	WIRLY I-OIU [14.6] RADAR	WESVA I-OIU [24.5] RADAR	WISHY I-OIU [17.8] RADAR	WERTH I-OIU [11.3] RADAR	FAXES I-OIU [6.9] RADAR	CULCO I-OIU [5] RADAR	I-OIU [2.6]	I-OIU [1.7]	NHLEN INT
8000	7000	6000	5000	4000	3000	2000	1400	800	3000	800
3.8 NM	3.1 NM	3.6 NM	3.2 NM	3.3 NM	4.4 NM	1.9 NM	2.4	0.9	VGS1 and ILS glidepath not coincident (VGS1 Angle 3.00/TCH 70).	



CATEGORY	A	B	C	D
S-ILS 1L	496/18		200 (200-½)	
S-LOC 1L	660/24	364 (400-½)	660/35	364 (400-¾)
CIRCLING	940-1	628 (700-1)	940-1¾ 628 (700-1¾)	1180-2¾ 868 (900-2¾)

NE-3, 28 NOV 2024 to 26 DEC 2024

NE-3, 28 NOV 2024 to 26 DEC 2024