

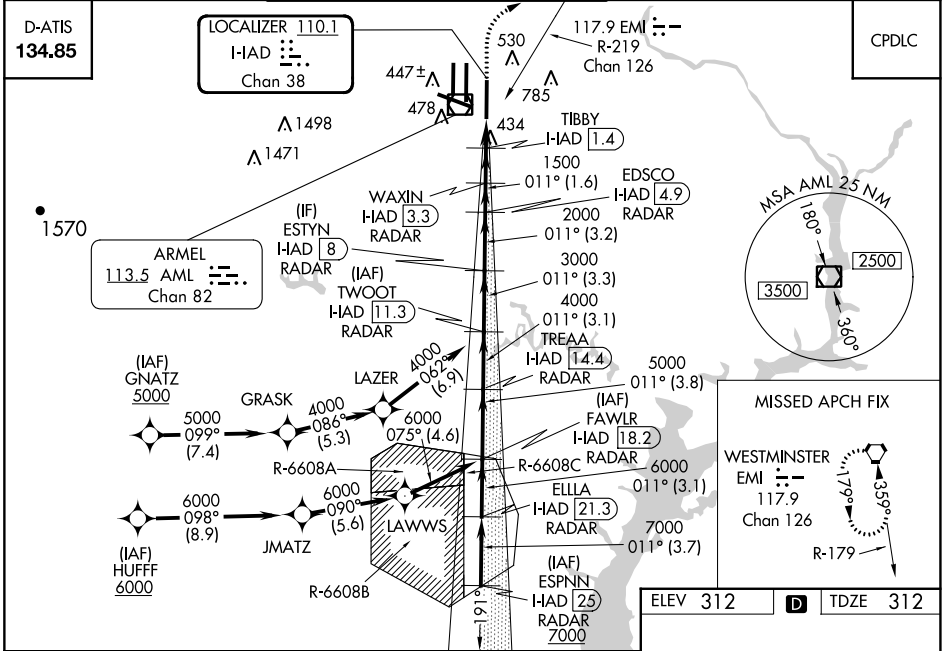
LOC/DME I-HAD <b>110.1</b> Chan 38	APP CRS <b>011°</b>	Rwy ldg <b>11500</b> TDZE <b>312</b> Apt Elev <b>312</b>
--	------------------------	--

# ILS or LOC RWY 1R

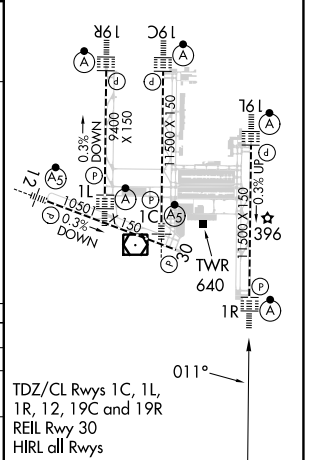
WASHINGTON DULLES INTL (IAD)

RNP APCH-GPS. From GNATZ, or HUFFF.	ALSF-2 	MISSED APPROACH: Climb to 800 then climbing right turn to 3000 on heading 060° and EMI VORTAC R-219 to EMI VORTAC and hold.
DME or RADAR required. DME required for LOC only. RADAR required for procedure entry at ESPNN.		
Simultaneous approach authorized.		

POTOMAC APP CON <b>120.45 306.925</b> (241°-330°) <b>128.525 306.925</b> (091°-240°) <b>126.1 338.25</b> (331°-090°)	DULLES TOWER <b>120.1 317.8</b> (Rwy 1R/19L) <b>120.25 348.6</b> (Rwy 1C/19C) <b>134.425 348.6</b> (Rwys 1L/19R and 12/30)	GND CON <b>121.9 317.8</b> (EAST) <b>121.625 348.6</b> (WEST)	CLNC DEL <b>135.7 317.8</b>
---	---	---	--------------------------------



VGSi and ILS glidepath not coincident (VGSi Angle 3.00/TCH 72).		800	3000	EMI
		↑	hdg 060°	R-219
ESPNN I-HAD 25 RADAR	ELLA I-HAD 21.3 RADAR	FAWLR I-HAD 18.2 RADAR	TREA I-HAD 14.4 RADAR	TWOOT I-HAD 11.3 RADAR
ESTYN I-HAD 8 RADAR	EDSCO I-HAD 4.9 RADAR	WAXIN I-HAD 3.3 RADAR	TIBBY I-HAD 1.4 RADAR	DME ANT.
7000	7000	6000	5000	4000
3000	2000	1500	900	
GS 3.00° TCH 55	3.7 NM	3.1 NM	3.8 NM	3.1 NM
	3.2 NM	1.6 NM	1.9 NM	0.7 NM
CATEGORY	A		B	
S-ILS 1R	512/18		200 (200-½)	
S-LOC 1R	700/24 388 (400-½)		700/35 388 (400-¾)	
CIRCLING	940-1 628 (700-1)		940-1¾ 628 (700-1¾)	
			1180-2¾ 868 (900-2¾)	



NE-3, 28 NOV 2024 to 26 DEC 2024

NE-3, 28 NOV 2024 to 26 DEC 2024