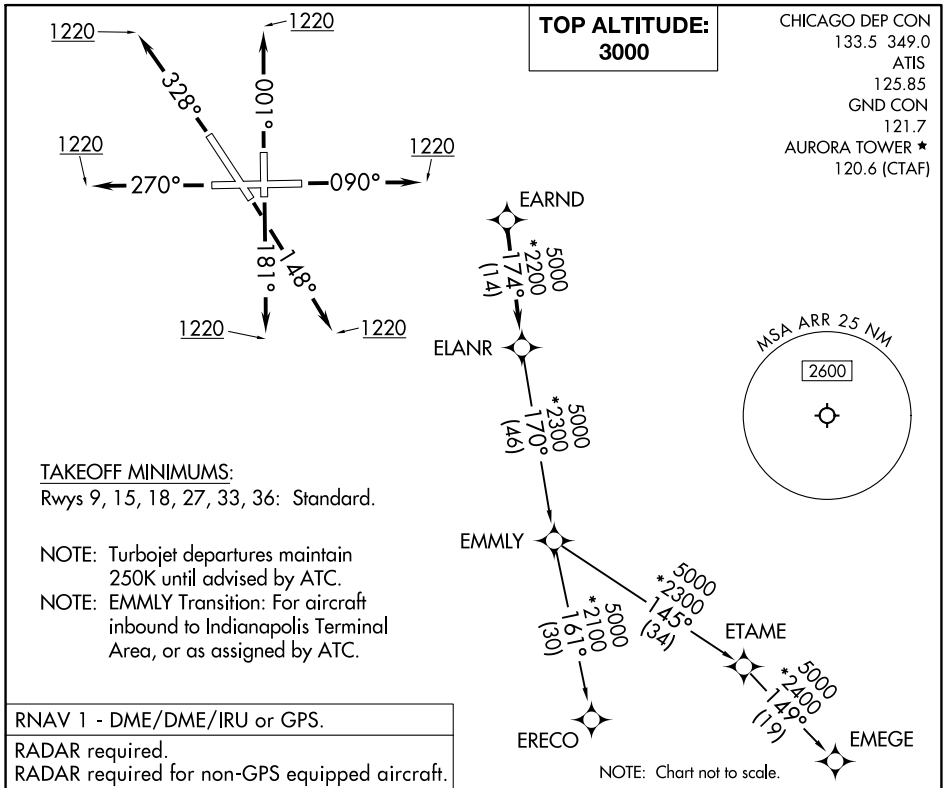


ELANR SEVEN DEPARTURE (RNAV)



DEPARTURE ROUTE DESCRIPTION

TAKEOFF RUNWAY 9: Climb on heading 090° to 1220, then as assigned by ATC, for vectors to EARND, thence. . . .

TAKEOFF RUNWAY 15: Climb on heading 148° to 1220, then as assigned by ATC, for vectors to EARND, thence. . . .

TAKEOFF RUNWAY 18: Climb on heading 181° to 1220, then as assigned by ATC, for vectors to EARND, thence. . . .

TAKEOFF RUNWAY 27: Climb on heading 270° to 1220, then as assigned by ATC, for vectors to EARND, thence. . . .

TAKEOFF RUNWAY 33: Climb on heading 328° to 1220, then as assigned by ATC, for vectors to EARND, thence. . . .

TAKEOFF RUNWAY 36: Climb on heading 001° to 1220, then as assigned by ATC, for vectors to EARND, thence. . . .

. . . . on track 174° to ELANR, then on (transition), maintain 3000.
Expect filed altitude 10 minutes after departure.

EMEGE TRANSITION (ELANR7.EMEGE):
EMMLY TRANSITION (ELANR7.EMMLY):
ERECO TRANSITION (ELANR7.ERECO):

ELANR SEVEN DEPARTURE (RNAV)

(ELANR7.ELANR) 31OCT24

EC-3, 28 NOV 2024 to 26 DEC 2024

EC-3, 28 NOV 2024 to 26 DEC 2024