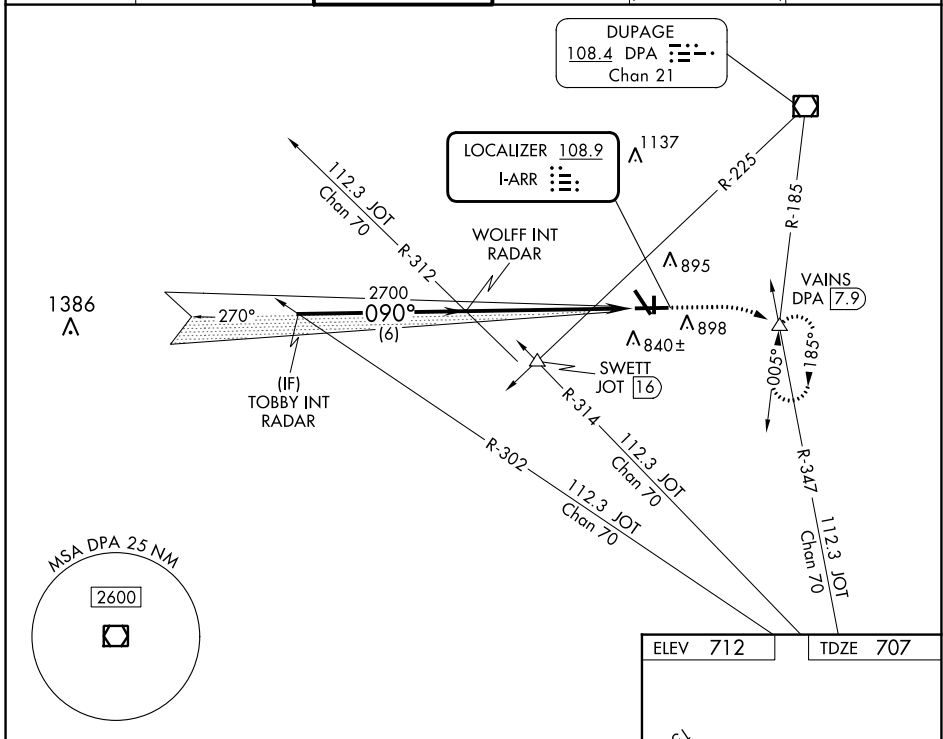


LOC I-ARR <b>108.9</b>	APP CRS <b>090°</b>	Rwy Idg TDZE Apt Elev	<b>6501</b> <b>707</b> <b>712</b>
---------------------------	------------------------	-----------------------------	---

# ILS or LOC RWY 9

AURORA MUNI (A.R.R.)

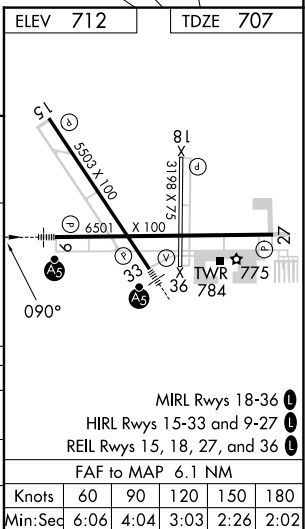
RADAR required for procedure entry.		MALSR		MISSED APPROACH: Climb to 1200 then climbing right turn to 3000 on heading 090° and on DPA VOR/DME R-185 to VAINS INT/DPA 7.9 DME and hold, continue climb-in-hold to 3000.	
▼ For inop ALS, increase S-LOC 9 Cat C/D visibilities to 1½ SM.		GND CON <b>121.7</b>		CLNC DEL <b>121.7</b> (When tower closed)	
ATIS <b>125.85</b>	CHICAGO APP CON <b>133.5 349.0</b>	AURORA TOWER ★ <b>120.6 (CTAF)</b>		UNICOM <b>122.95 123.5</b>	



EC-3, 28 NOV 2024 to 26 DEC 2024

EC-3, 28 NOV 2024 to 26 DEC 2024

TOBBY INT RADAR	WOLFF INT RADAR	1200	3000	VAINS
		↑	hdg 090°	
2700		2700		△
GS 3.00° TCH 45		6 NM		6.1 NM
CATEGORY	A	B	C	D
S-ILS 9	907-½ 200 (200-½)			
S-LOC 9	1220-½ 513 (600-½)		1220-1 513 (600-1)	
☐ CIRCLING	1220-1 508 (600-1)		1300-1½ 588 (600-1½) 1320-2 608 (700-2)	



MIRL Rwy 18-36	1
HIRL Rwy 15-33 and 9-27	1
REIL Rwy 15, 18, 27, and 36	1
FAF to MAP 6.1 NM	
Knots	60 90 120 150 180
Min:Sec	6:06 4:04 3:03 2:26 2:02