

(BLOKR7.BLOKR) 24305

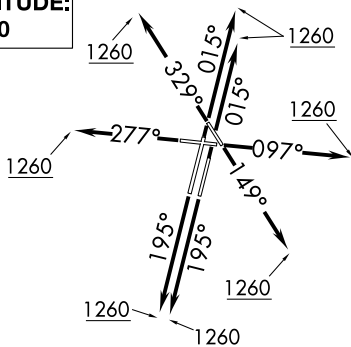
AL-5104 (FAA)

# BLOKR SEVEN DEPARTURE (RNAV)

DUPAGE (DPA)  
CHICAGO/WEST CHICAGO, ILLINOIS

CHICAGO DEP CON  
133.5 349.0  
ATIS  
132.075  
GND CON  
121.8  
DUPAGE TOWER  
120.9 257.8

**TOP ALTITUDE:  
3000**



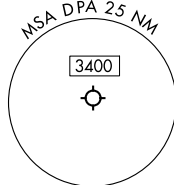
### TAKEOFF MINIMUMS:

Rwys 2L/R, 10, 20L/R, 28, 33: Standard.

Rwy 15: 300-1% or standard with minimum climb of 205' per NM to 1000.

NOTE: Turbojet departures maintain 250K until advised by ATC.

NOTE: ROBERTS TRANSITION: For aircraft inbound to CMI or STL, or as assigned by ATC.



RNAV 1 - DME/DME/IRU or GPS.  
RADAR required. RADAR required for non-GPS equipped aircraft.

### DEPARTURE ROUTE DESCRIPTION

TAKEOFF RUNWAYS 2L/R: Climb on heading 015° to 1260, then as assigned by ATC, for vectors to BACEN, thence. . . .

TAKEOFF RUNWAY 10: Climb on heading 097° to 1260, then as assigned by ATC, for vectors to BACEN, thence. . . .

TAKEOFF RUNWAY 15: Climb on heading 149° to 1260, then as assigned by ATC, for vectors to BACEN, thence. . . .

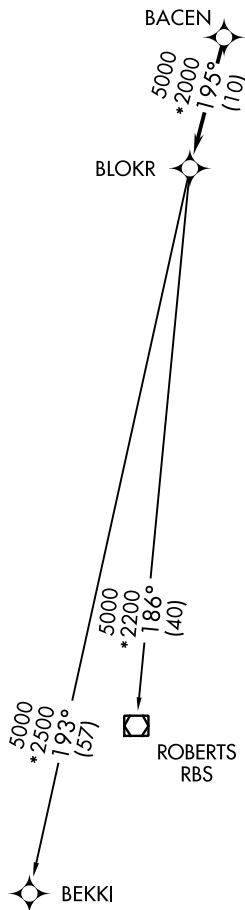
TAKEOFF RUNWAYS 20L/R: Climb on heading 195° to 1260, then as assigned by ATC, for vectors to BACEN, thence. . . .

TAKEOFF RUNWAY 28: Climb on heading 277° to 1260, then as assigned by ATC, for vectors to BACEN, thence. . . .

TAKEOFF RUNWAY 33: Climb on heading 329° to 1260, then as assigned by ATC, for vectors to BACEN, thence. . . .

. . . .on track 195° to BLOKR, then on (transition). Maintain 3000. Expect filed altitude 10 minutes after departure.

BEKKI TRANSITION (BLOKR7.BEKKI):  
ROBERTS TRANSITION (BLOKR7.RBS):



NOTE: Chart not to scale.

# BLOKR SEVEN DEPARTURE (RNAV)

(BLOKR7.BLOKR) 31OCT24

CHICAGO/WEST CHICAGO, ILLINOIS  
DUPAGE (DPA)

EC-3, 28 NOV 2024 to 26 DEC 2024

EC-3, 28 NOV 2024 to 26 DEC 2024