


LOC I-GVK 111.7	APP CRS 015°	Rwy Idg 7571
		TDZE 754
		Apt Elev 759

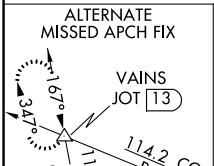
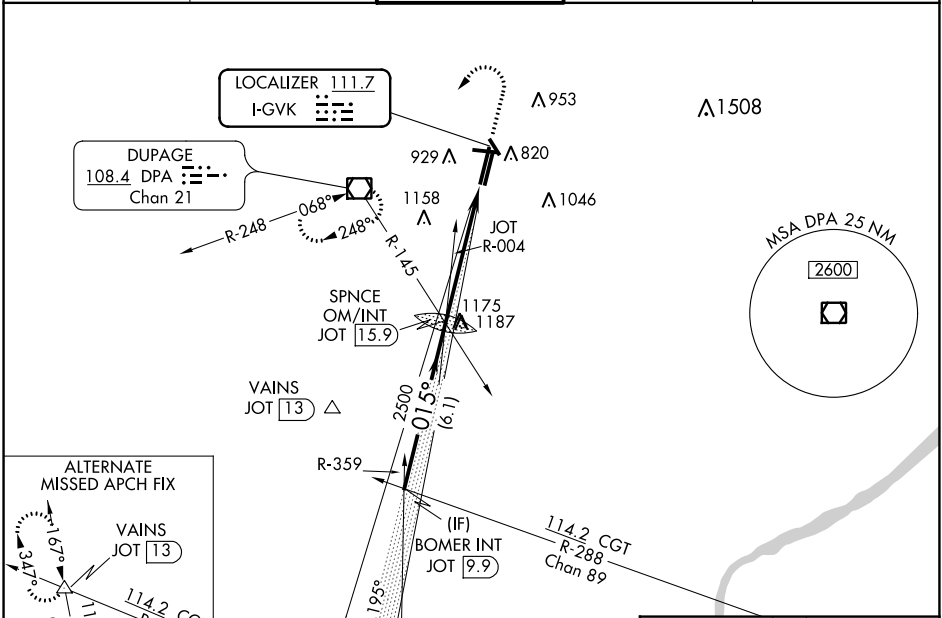
ILS or LOC RWY 2L

DUPAGE (DPA)

⚠ Circling Rwy 15, 28, 33 NA at night. When local altimeter setting not received, use Aurora altimeter setting and increase all DA 37 feet and all MDA 40 feet. For inop ALS, increase S-LOC 2L Cat C/D visibility to 2 SM. For inop ALS when using Aurora altimeter setting, increase S-LOC 2L Cat C/D visibility to 2½ SM.

MALSR

MISSED APPROACH: Climb to 1200 then climbing left turn to 3000 direct DPA VOR/DME and hold, continue climb-in-hold to 3000.

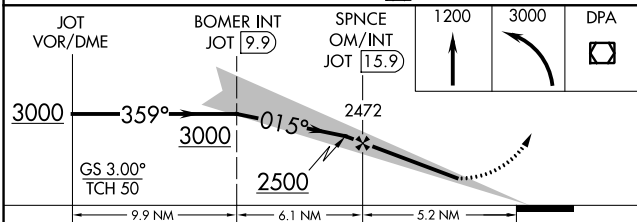
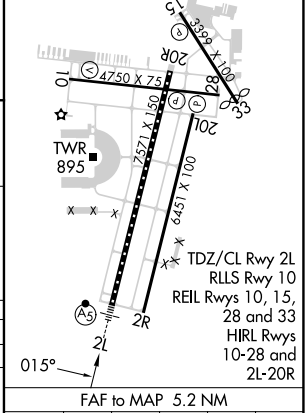
ATIS 132.075	CHICAGO APP CON 133.5 349.0	DUPAGE TOWER 120.9 257.8	GND CON 121.8	CLNC DEL 119.75
------------------------	---------------------------------------	------------------------------------	-------------------------	---------------------------



Procedure NA for arrivals on JOT VOR/DME airway radials 314 CW 328.

ELEV 759	TDZE 754
----------	----------

MIRL Rwy 15-33 and 2R-20L



CATEGORY	A	B	C	D
S-ILS 2L	954-½ 200 (200-½)			
S-LOC 2L	1500-½ 746 (800-½)	1500-¾ 746 (800-¾)	1500-1¾ 746 (800-1¾)	746 (800-1¾)
C CIRCLING	1500-1 741 (800-1)	1500-1¼ 741 (800-1¼)	1500-2¼ 741 (800-2¼)	1500-2½ 741 (800-2½)

FAF to MAP 5.2 NM					
Knots	60	90	120	150	180
Min:Sec	5:12	3:28	2:36	2:05	1:44

EC-3, 28 NOV 2024 to 26 DEC 2024

EC-3, 28 NOV 2024 to 26 DEC 2024