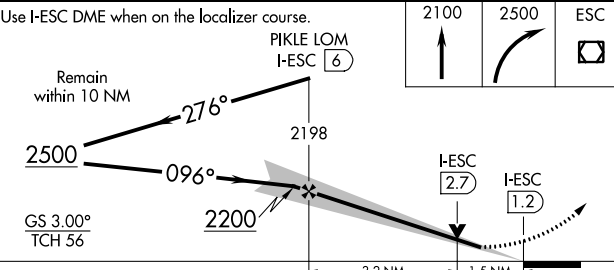
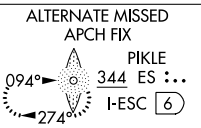
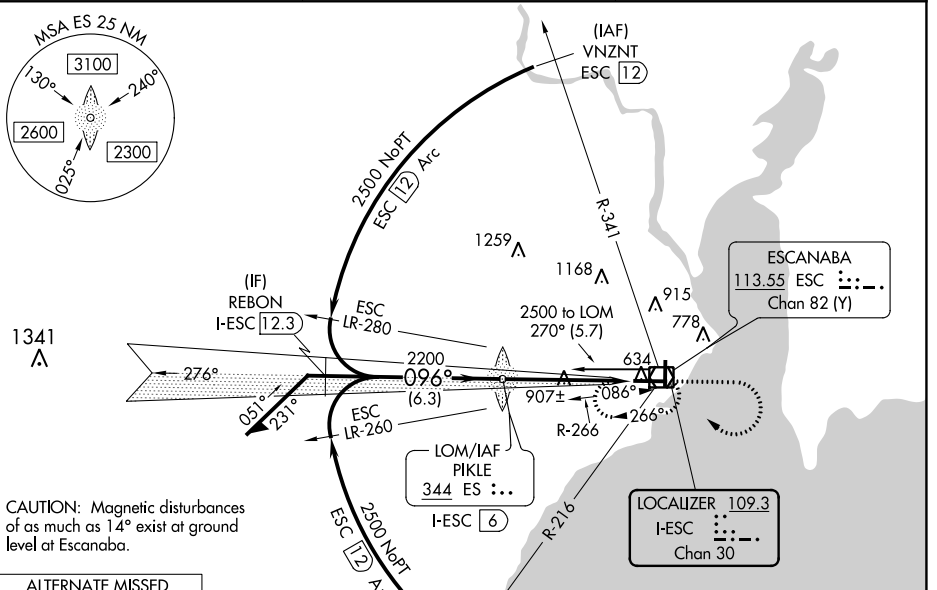


LOC/DME I-ESC <b>109.3</b> Chan 30	APP CRS <b>096°</b>	Rwy ldg <b>6498</b> TDZE <b>609</b> Apt Elev <b>609</b>
--	------------------------	---

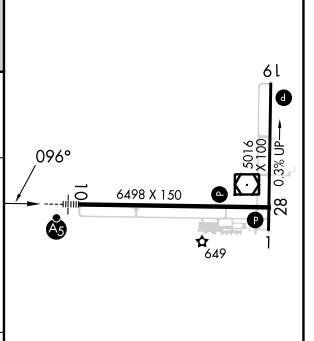
# ILS or LOC RWY 10

DELTA COUNTY (ESC)

ADF or DME required for procedure entry. ADF or DME required for LOC only.		MALSR 	MISSED APPROACH: Climb to 2100 then climbing right turn to 2500 direct ESC VOR/DME and hold.
AWOS-3PT <b>121.425</b>	MINNEAPOLIS CENTER <b>127.65</b>	UNICOM <b>122.8 (CTAF)</b>	



ELEV 609		TDZE 609
----------	--	----------



CATEGORY	A	B	C	D
S-ILS 10		809-½	200 (200-½)	
S-LOC 10	1160-½	551 (600-½)	1160-1½	551 (600-1½)
CIRCLING	1160-1	551 (600-1)	1280-2 671 (700-2)	1480-2¾ 871 (900-2¾)

HIRL Rwy 10-28   
MIRL Rwy 1-19   
REIL Rws 1 and 28   
FAF to MAP 4.8 NM

Knots	60	90	120	150	180
Min:Sec	4:48	3:12	2:24	1:55	1:36

EC-1, 28 NOV 2024 to 26 DEC 2024

EC-1, 28 NOV 2024 to 26 DEC 2024