

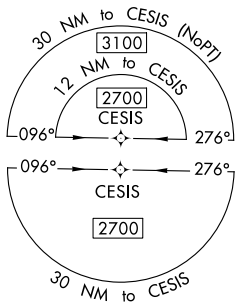
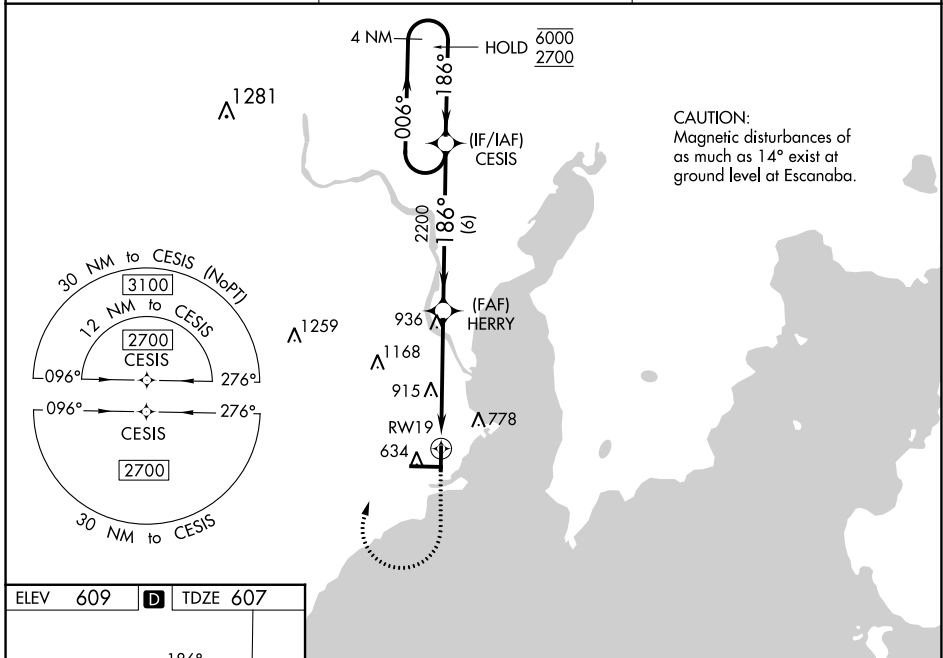
APP CRS	Rwy Idg	<b>5015</b>
<b>186°</b>	TDZE	<b>607</b>
	Apt Elev	<b>609</b>

# RNAV (GPS) RWY 19

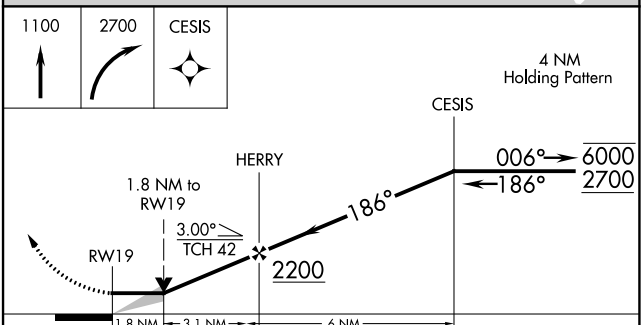
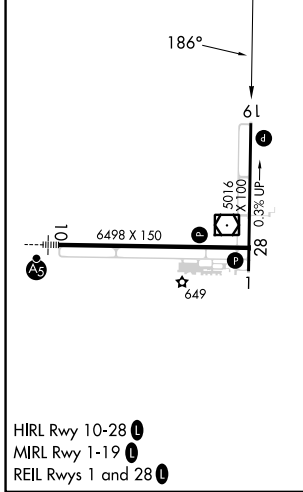
DELTA COUNTY (E/SC)

RNP APCH - GPS.	MISSED APPROACH: Climb to 1100, then climbing right turn to 2700 direct CESIS and hold.
-----------------	--

AWOS-3PT <b>121.425</b>	MINNEAPOLIS CENTER <b>127.65</b>	UNICOM <b>122.8</b> (CTAF) <b>0</b>
----------------------------	-------------------------------------	--



ELEV 609	<b>D</b>	TDZE 607
----------	----------	----------



CATEGORY	A	B	C	D
LNAV MDA	1220-1	613 (700-1)	1220-1 <sup>3</sup> / <sub>4</sub>	613 (700-1 <sup>3</sup> / <sub>4</sub> )
<b>C</b> CIRCLING	1220-1	611 (700-1)	1280-1 <sup>3</sup> / <sub>4</sub>	1480-2 <sup>3</sup> / <sub>4</sub>
			671 (700-1 <sup>3</sup> / <sub>4</sub> )	871 (900-2 <sup>3</sup> / <sub>4</sub> )

EC-1, 28 NOV 2024 to 26 DEC 2024

EC-1, 28 NOV 2024 to 26 DEC 2024