

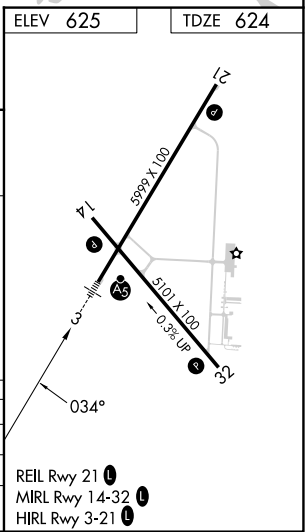
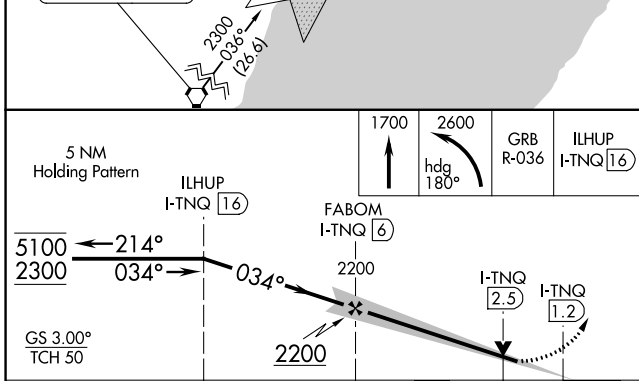
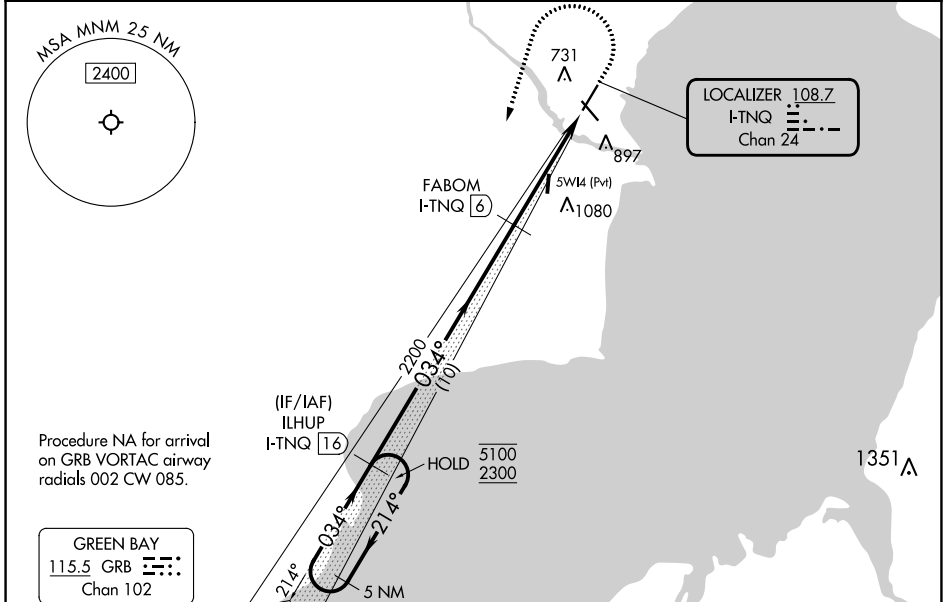
LOC/DME I-TNQ 108.7 Chan 24	APP CRS 034°	Rwy Idg 5999 TDZE 624 Apt Elev 625
---	------------------------	---

ILS or LOC RWY 3

MENOMINEE RGNL (MNM)

DME required.	<p>Autopilot coupled approach NA below 1830. Circling Rwy 14, 32 NA at night. Rwy 3 helicopter visibility reduction below 3/4 SM NA. Inop table does not apply to S-ILS 3, S-LOC 3 Cats A and B. Increase S-LOC Cats C and D visibility to 1 1/2 SM.</p>	MALSR	<p>MISSED APPROACH: Climb to 1700 then climbing left turn to 2600 on heading 180° and GRB R-036 to ILHUP/16 DME and hold.</p>
<p>▼ Autopilot coupled approach NA below 1830. Circling Rwy 14, 32 NA at night. Rwy 3 helicopter visibility reduction below 3/4 SM NA. Inop table does not apply to S-ILS 3, S-LOC 3 Cats A and B. Increase S-LOC Cats C and D visibility to 1 1/2 SM.</p> <p>▲ NA</p>			

AWOS-3PT 121.45	GREEN BAY APP CON ★ 120.3 338.2	UNICOM 122.8 (CTAF)
---------------------------	---	-------------------------------



CATEGORY	A	B	C	D
S-ILS 3		900-1	276 (300-1)	
S-LOC 3		1080-1	456 (500-1)	
CIRCLING	1200-1	575 (600-1)	1200-1 1/2 575 (600-1 1/2)	1380-2 1/2 755 (800-2 1/2)

EC-1, 28 NOV 2024 to 26 DEC 2024

EC-1, 28 NOV 2024 to 26 DEC 2024