

| | | | |
|--|------------------------|-----------------------------|---|
| WAAS CH 82638 W20A | APP CRS 200° | Rwy Idg TDZE Apt Elev | 6000 309 311 |
|--|------------------------|-----------------------------|---|

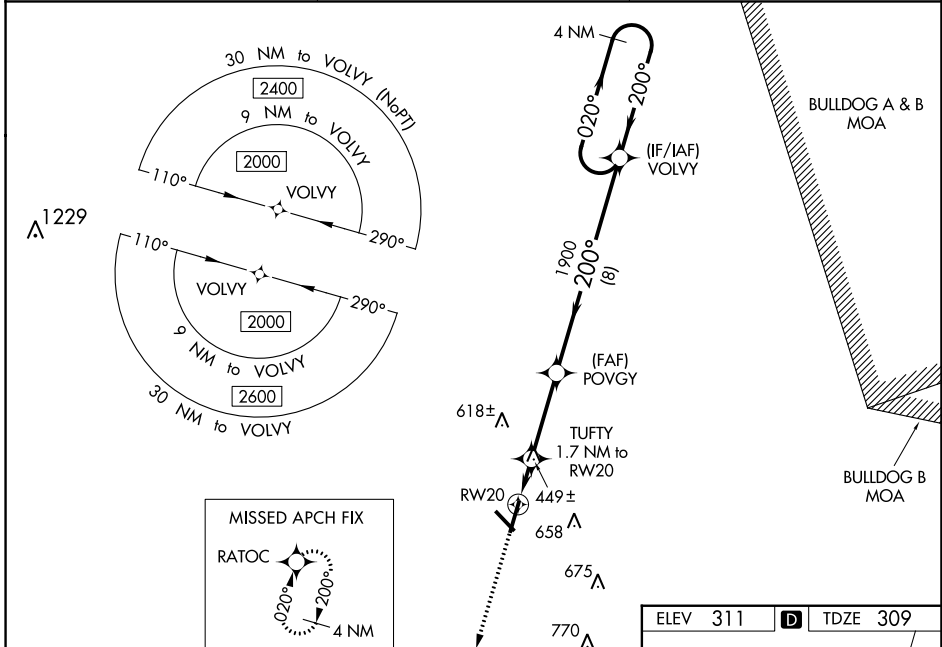
RNAV (GPS) RWY 20

W H 'BUD' BARRON (DBN)

▼ Night landing: Rwy 32 NA. For uncompensated Baro-VNAV systems, LNAV/VNAV NA below -15°C (5°F) or above 54°C (130°F). Baro-VNAV and VDP NA when using Vidalia altimeter setting.
▲ DME/DME RNP-0.3 NA. Helicopter visibility reduction below 3/4 SM NA. When local altimeter setting not received, use Vidalia altimeter setting; increase LPV DA to 681 feet and LNAV/VNAV DA to 693 feet and all MDA 100 feet; increase LPV all Cats visibility 1/4 mile and LNAV/VNAV all Cats visibility 3/8 mile and LNAV Cat C/D and Circling Cat C/D visibility 1/4 mile.

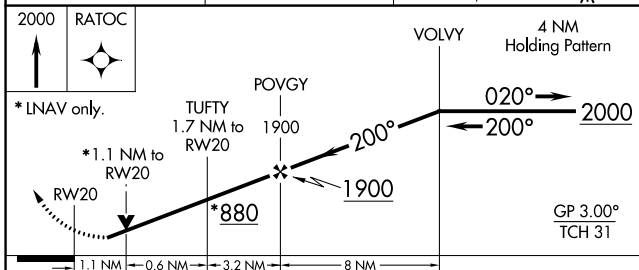
MISSED APPROACH:
Climb to 2000 direct
RATOC and hold.

| | | |
|--------------------------|---|---------------------------------|
| AWOS-3 118.425 | ATLANTA APP CON * 124.2 279.6 | UNICOM 122.7 (CTAF) 0 |
|--------------------------|---|---------------------------------|

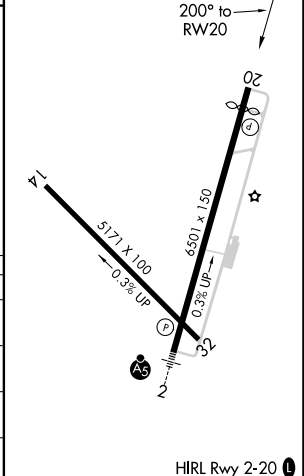


SE-4, 28 NOV 2024 to 26 DEC 2024

SE-4, 28 NOV 2024 to 26 DEC 2024



| | | |
|----------|----------|----------|
| ELEV 311 | D | TDZE 309 |
|----------|----------|----------|



| CATEGORY | A | B | C | D |
|-------------------|----------------------|----------------------|-----------------------|-------------------------------|
| LPV DA | | 587-1 | 278 (300-1) | |
| LNAV/VNAV DA | | 688-1 | 379 (400-1) | |
| LNAV MDA | 700-1 | 391 (400-1) | 700-1 1/8 | 391 (400-1 1/8) |
| C CIRCLING | 760-1 449 (500-1) | 780-1 469 (500-1) | 1020-2 709 (800-2) | 1020-2 1/4 709 (800-2 1/4) |

HIRL Rwy 2-20 0