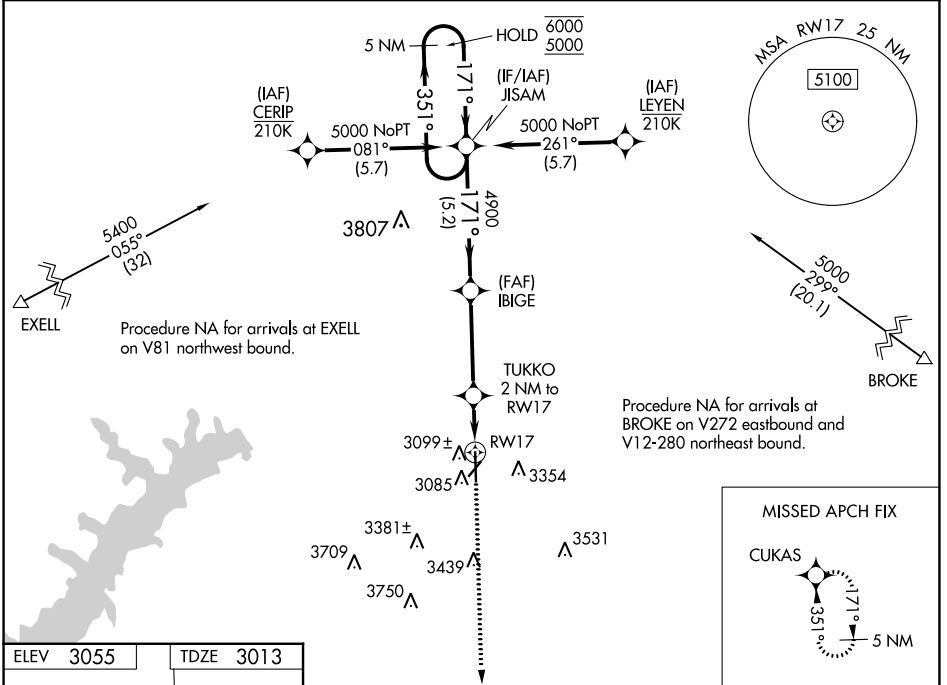


WAAS CH 99442 W 17A	APP CRS 171°	Rwy Idg 6299 TDZE 3013 Apt Elev 3055
---	------------------------	---

RNAV (GPS) RWY 17

HUTCHINSON COUNTY (BGD)

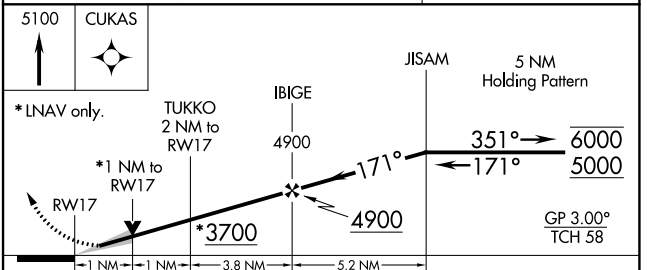
RNP APCH.		MISSED APPROACH: Climb to 5100 direct CUKAS and hold.
ASOS 118.325	AMARILLO APP CON ★ 119.5 307.0	UNICOM 123.0 (CTAF) 0



SC-2, 28 NOV 2024 to 26 DEC 2024

SC-2, 28 NOV 2024 to 26 DEC 2024

ELEV 3055	TDZE 3013
MIRL Rwys 3-21 and 17-35	



CATEGORY	A	B	C	D
LPV DA		3263-1	250 (300-1)	
LNAV/VNAV DA		3280-1	267 (300-1)	
LNAV MDA		3360-1	347 (400-1)	
CIRCLING	3620-1 565 (600-1)	3660-1 605 (700-1)	3760-2 705 (800-2)	3760-2½ 705 (800-2½)