

APP CRS	Rwy Idg	3606
109°	TDZE	78
	Apt Elev	78

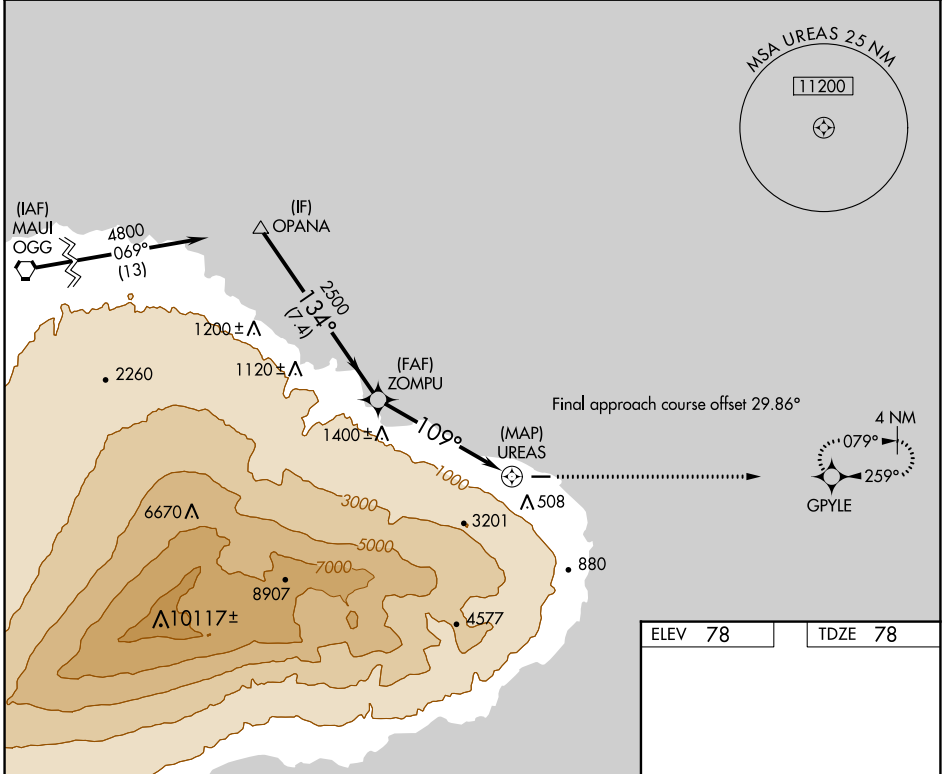
RNAV (GPS) RWY 8

HANA (HNM)(PHHN)

RNP APCH.
 ▼ Circling NA south of Rwy 8-26. Procedure NA at night.
 ▲ NA Rwy 8 helicopter visibility reduction below 1 SM NA.
 When local altimeter setting not received, procedure NA.

MISSED APPROACH: Climb to 2500 direct GPYLE and hold.

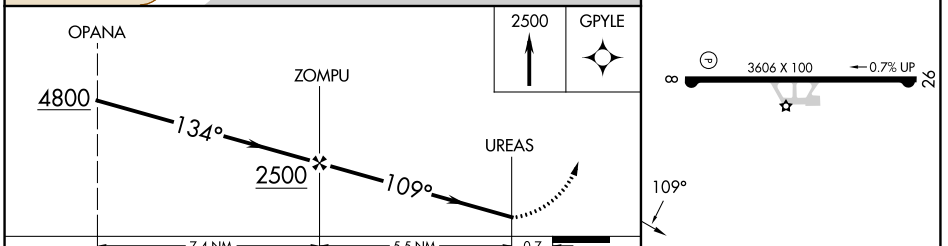
AWOS-3PT 118.325	HCF CENTER 118.45 278.3	CLNC DEL 122.3	CTAF 122.9 0
----------------------------	-----------------------------------	--------------------------	------------------------



PAC, 31 OCT 2024 to 26 DEC 2024

PAC, 31 OCT 2024 to 26 DEC 2024

ELEV 78	TDZE 78
----------------	----------------



CATEGORY	A	B	C	D
LNVA MDA	1500-1¼ 1422 (1500-1¼)	1500-1½ 1422 (1500-1½)	NA	
☐ CIRCLING	1500-1¼ 1422 (1500-1¼)	1500-1½ 1422 (1500-1½)	NA	

3606 X 100 ← 0.7% UP → 26

109°

MRL Rwy 8-26 0